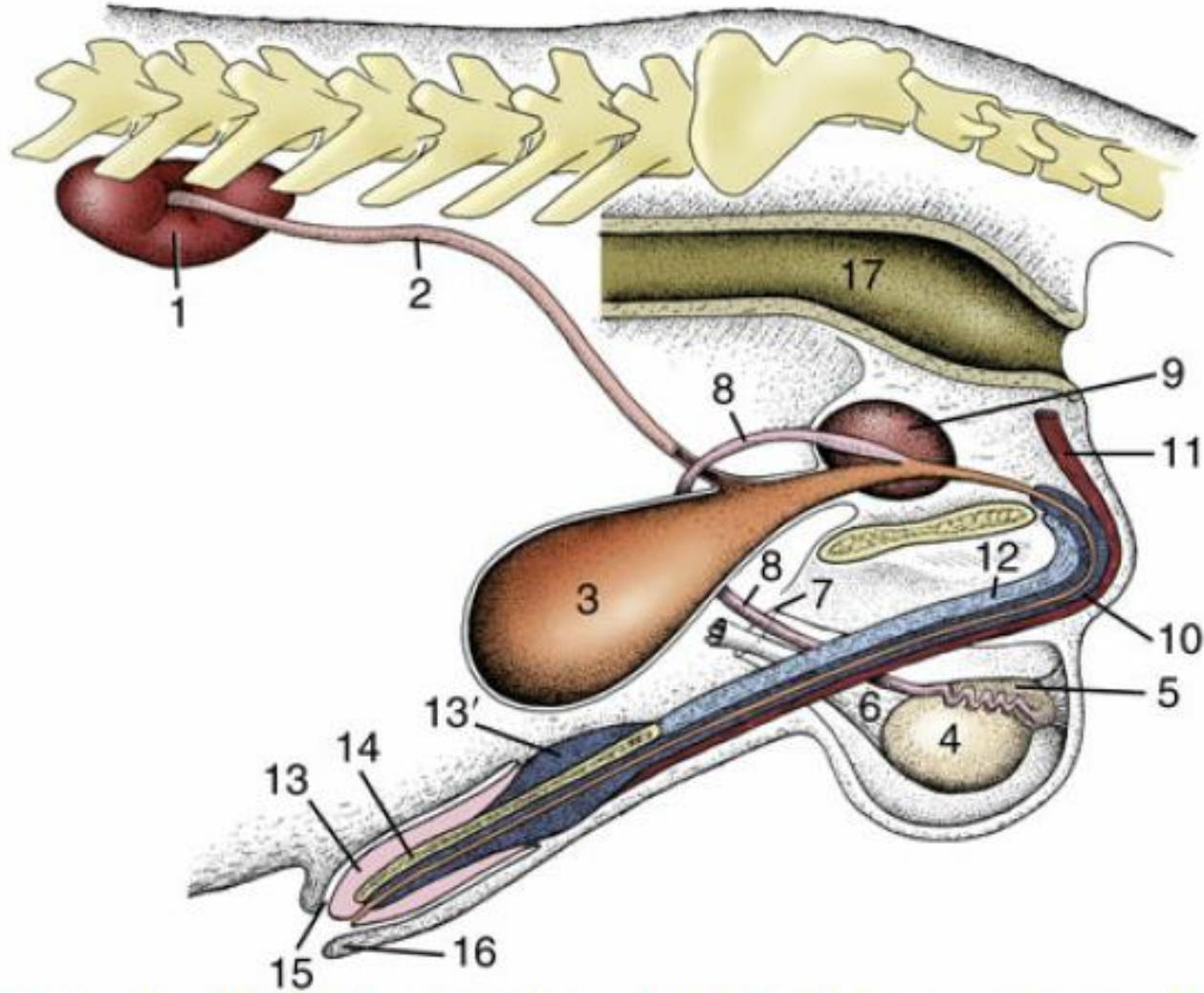
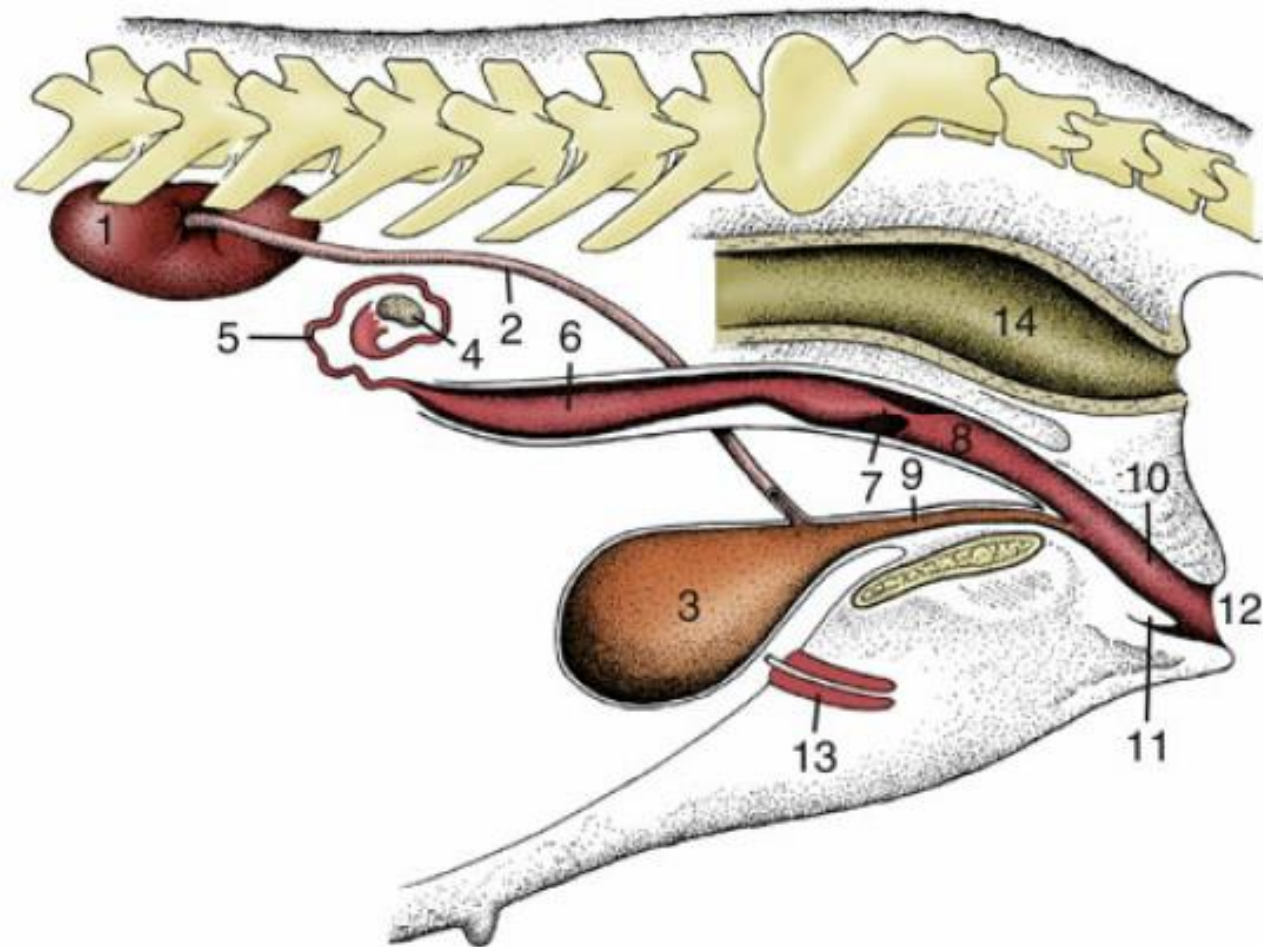


# Sistema Urinário



**FIG. 5.1** The male urinary and reproductive organs (dog). 1, Right kidney; 2, ureter; 3, bladder; 4, testis; 5, epididymis; 6, spermatic cord; 7, vaginal ring; 8, deferent duct; 9, prostate; 10, corpus spongiosum (spongy body); 11, retractor penis; 12, corpus cavernosum (cavernous body); 13, glans penis; 13', bulb of glans; 14, os penis; 15, preputial cavity; 16, prepuce; 17, rectum.



**FIG. 5.2** The female urinary and reproductive organs (bitch). 1, Right kidney; 2, ureter; 3, bladder; 4, ovary; 5, uterine tube; 6, uterine horn; 7, cervix; 8, vagina; 9, urethra; 10, vestibule; 11, clitoris; 12, vulva; 13, vaginal process; 14, rectum.

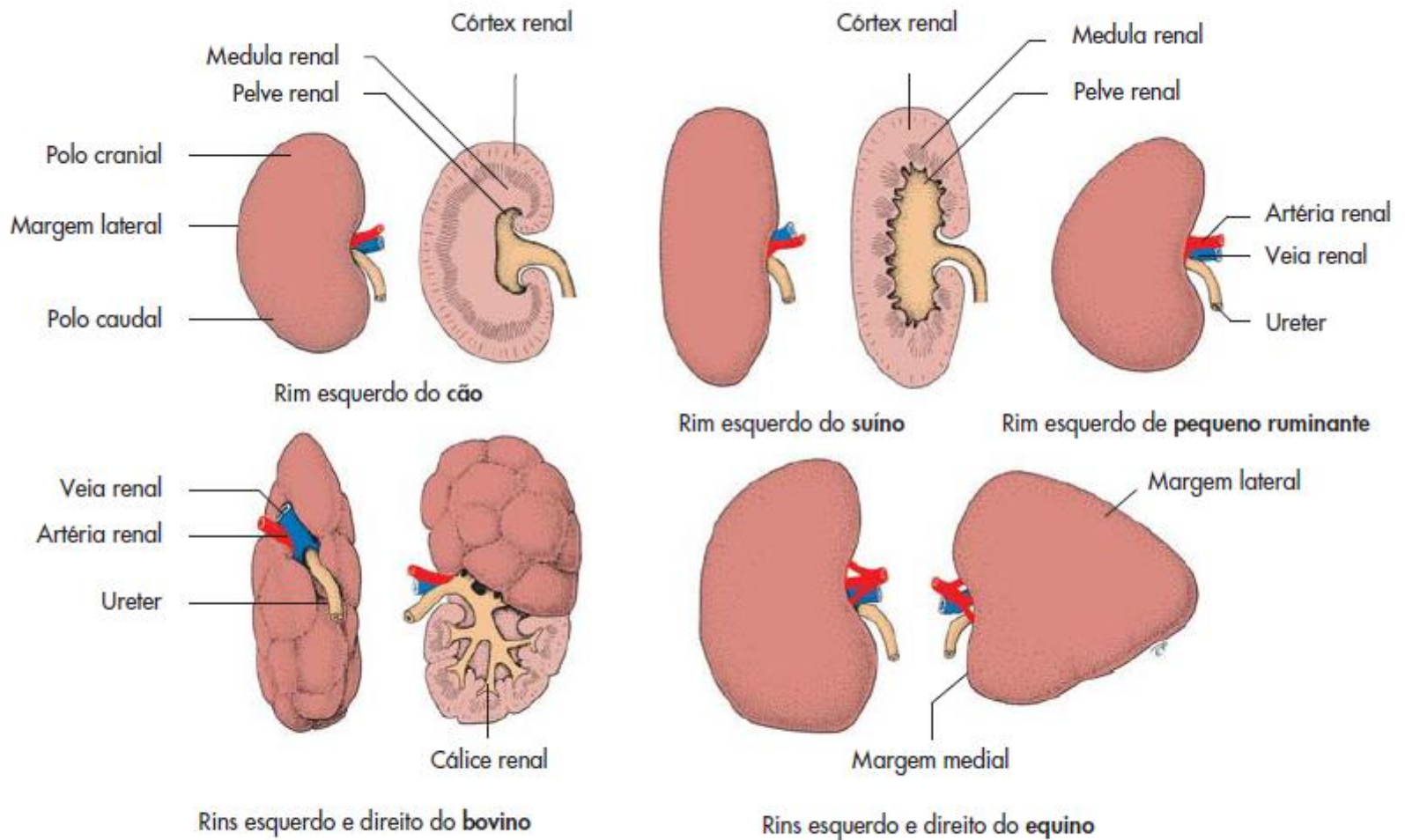


Figura 9-1 Rins dos mamíferos domésticos com pelve renal, ureter e artéria e veia renais (representação esquemática).

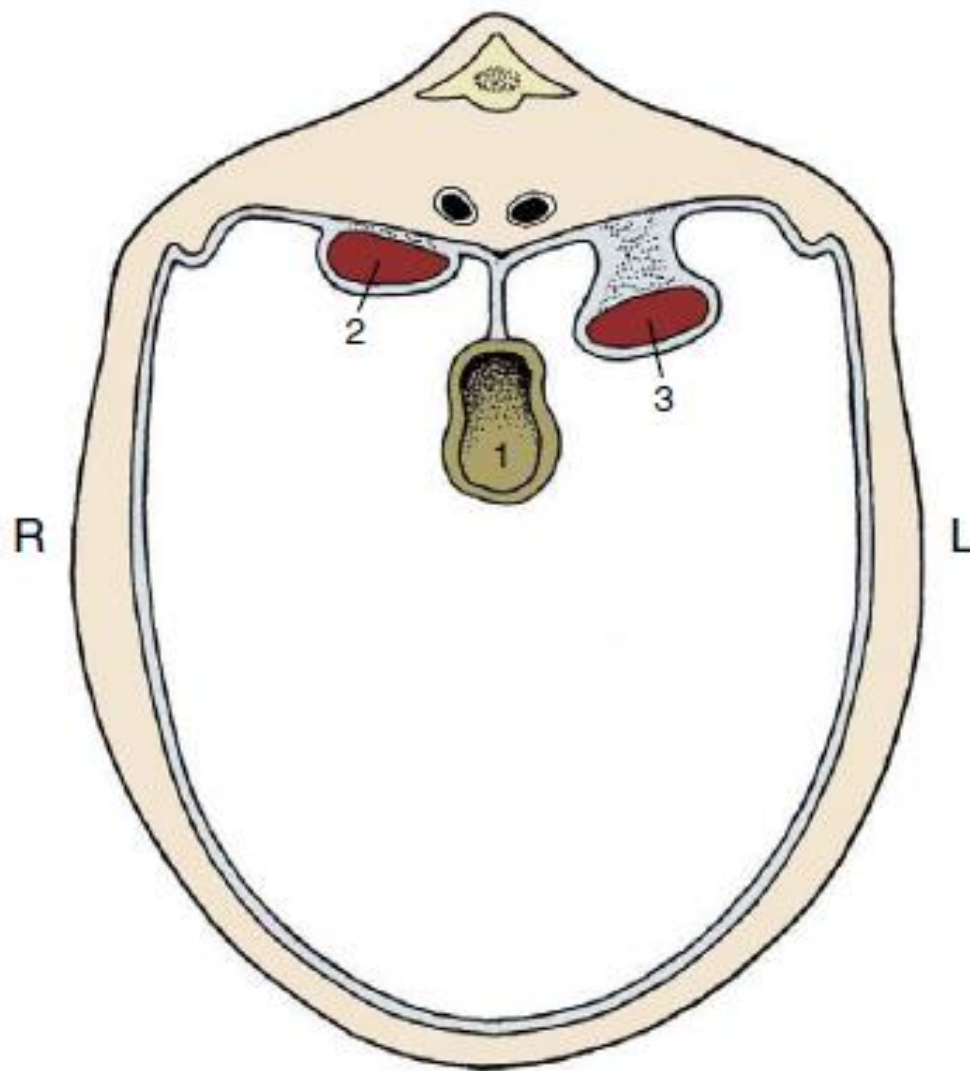
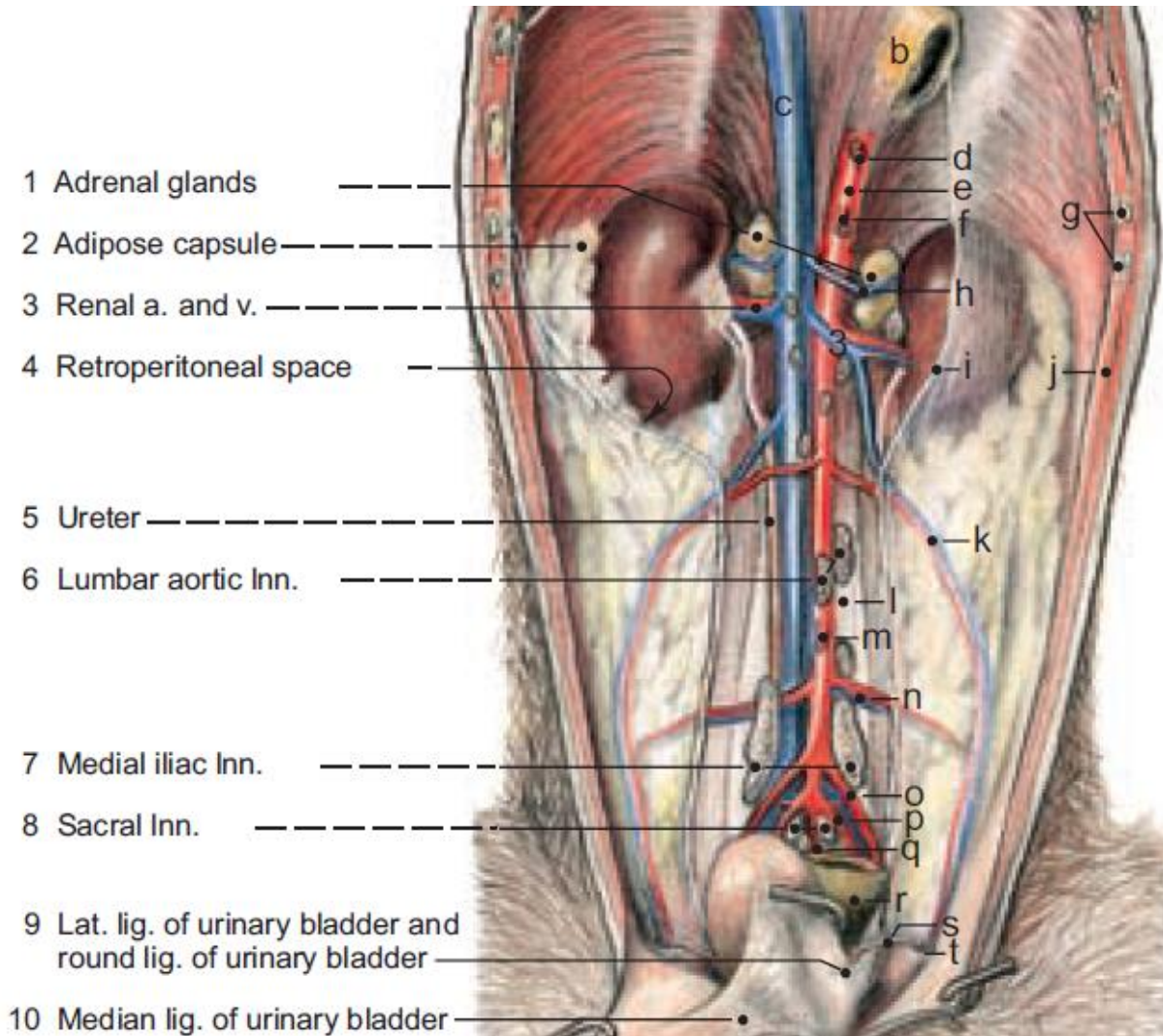
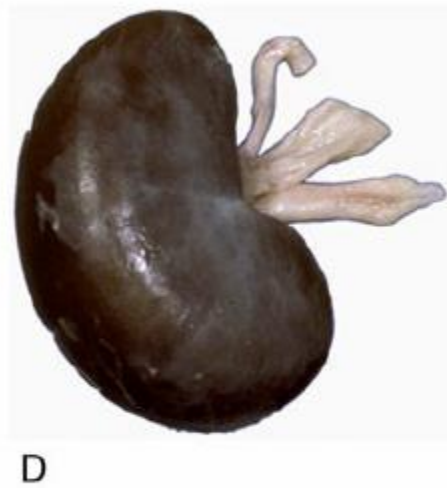


Figure 5–22 Schematic representation of the position of the kidneys in relation to the peritoneal cavity. 1, Gut; 2, right kidney (retroperitoneal); 3, left kidney (intraperitoneal: pendulous or “floating”).



**Legend :**

- a Diaphragm
- b Esophagus
- c Caud. vena cava
- d Celiac a.
- e Aorta
- f Cran. mesenteric a.
- g Ribs
- h Cran. abdominal v.
- i Peritoneum (section)
- j Abdominal mm.
- k Testicular a. and v.
- l Psoas minor m.
- m Caud. mesenteric a.
- n Deep circumflex iliac a. and v.
- o Ext. iliac a.
- p Int. iliac a.
- q Median sacral a.
- r Rectum
- s Deferent duct
- t Vaginal ring



**FIG. 5.21** Kidneys of (A) a dolphin, (B) a cow, (C) a pig, (D) a dog, and (E) a horse.

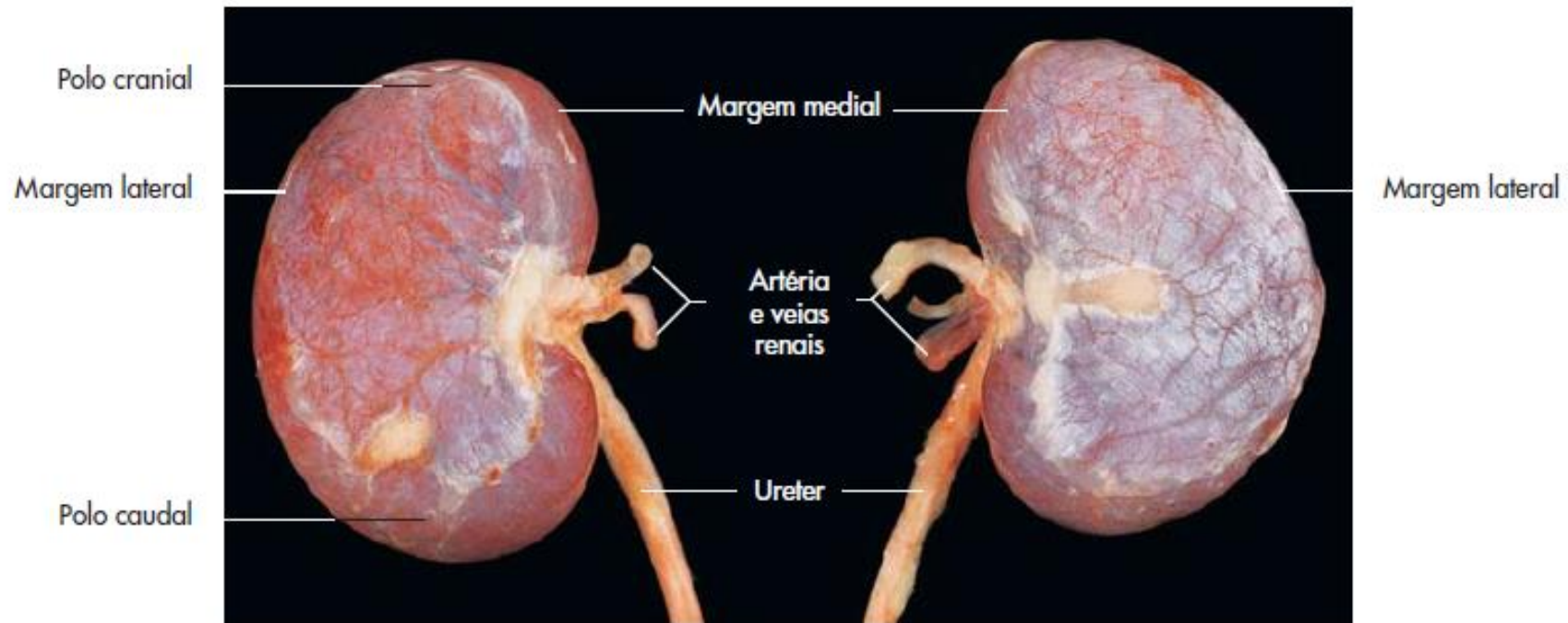


Figura 9-2 Rins esquerdo e direito de um cão com cápsula renal (vista dorsal).



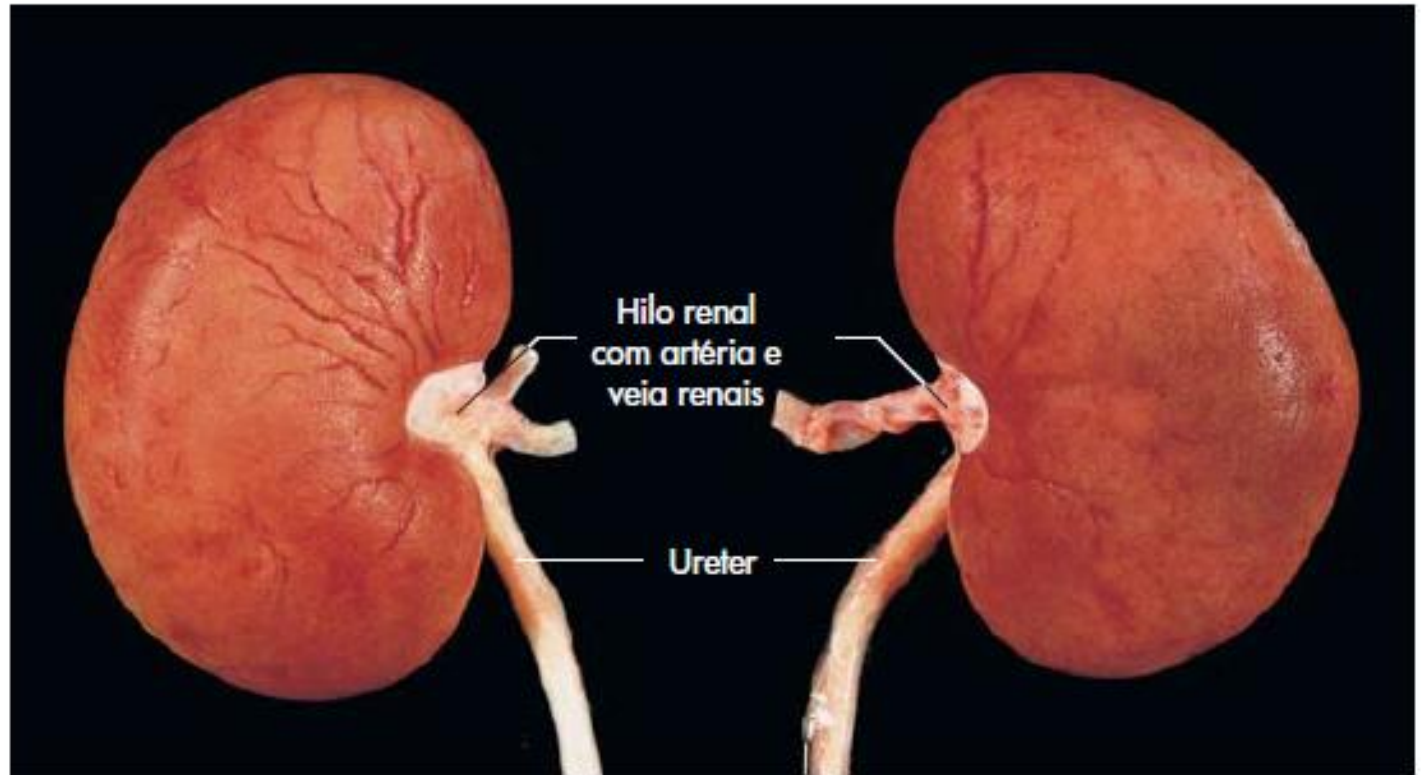


Figura 9-3 Rins esquerdo e direito de um cão com cápsula renal removida (vista dorsal).



Figura 9-4 Secção equatorial do rim unipiramidal liso de um cão.

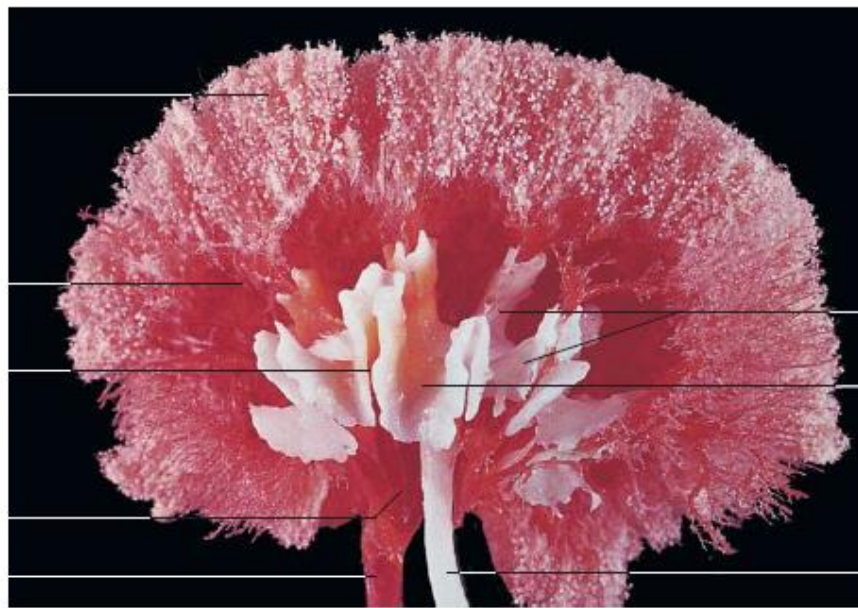
Córtex renal com  
glomérulo e artérias  
interlobulares

Artérias arqueadas

Artéria interlobar  
no sulco vascular  
do recesso da  
pelve renal

Artérias interlobares

Artéria renal



Recesso da  
pelve renal

Pelve renal

Ureter

**Figura 9-13** Pelve renal e artérias renais de um cão (preparado de corrosão).

Recesso da  
pelve renal

Ureter



**Figura 9-14** Pelve renal de um cão (preparado de corrosão); cortesia de H. Dier, Viena.

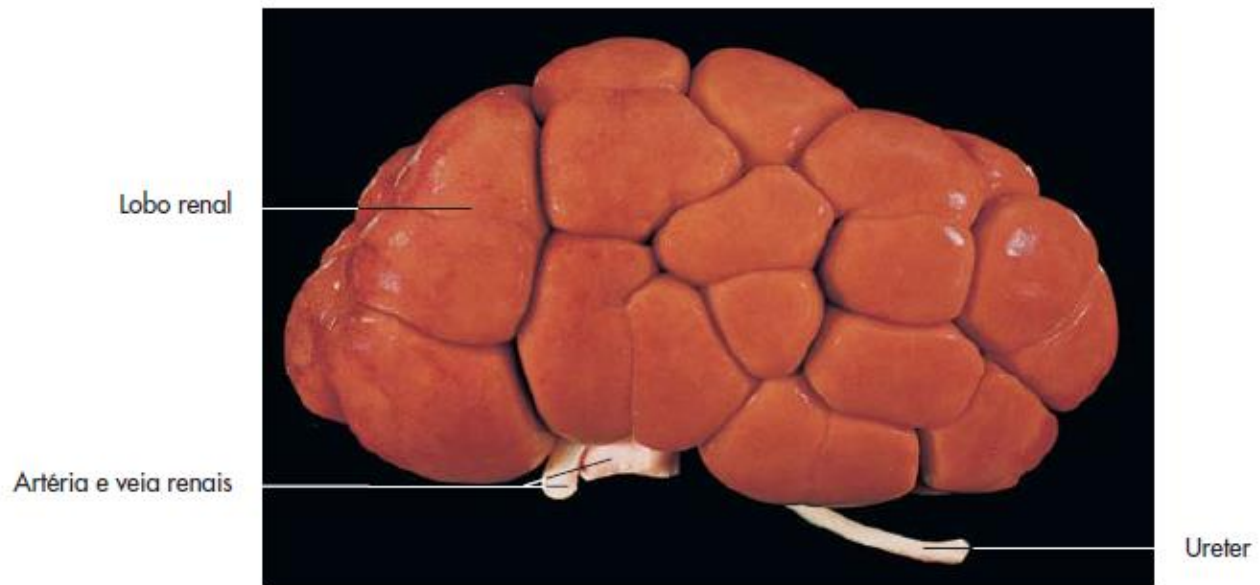


Figura 9-5 Rim multipiramidal de um bovino.



Figura 9-6 Secção do rim multipiramidal de um bovino.



**Figura 9-15** Ureter de um bovino com cálices renais (preparado de corrosão).

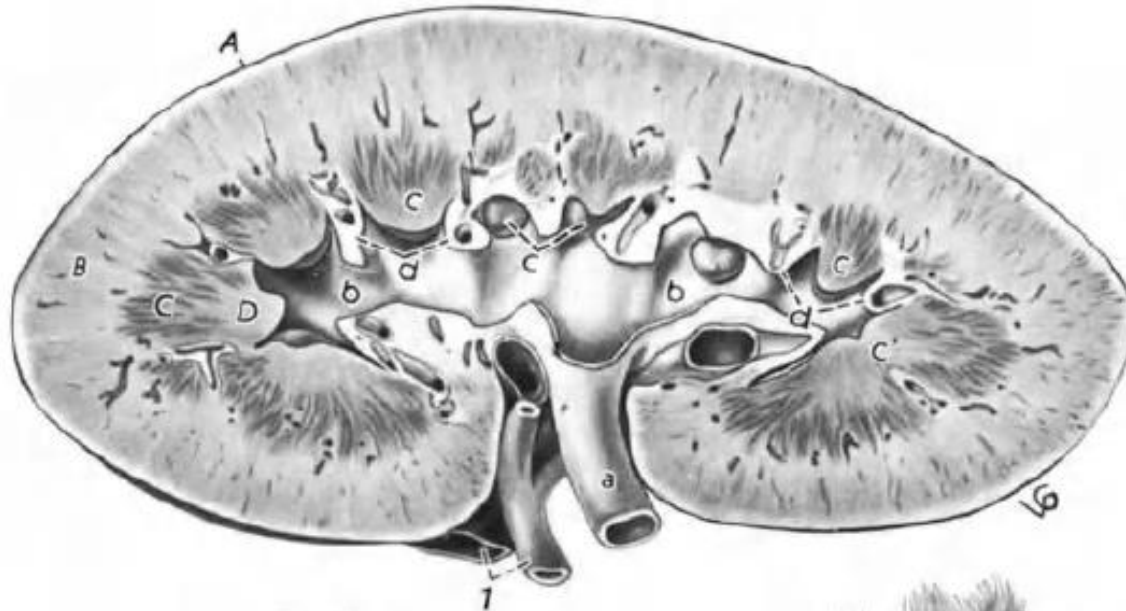


Fig. 428

Fig. 428. Kidney of the pig, sectioned through poles and hilus.

*A* Fibrous capsule; *B* Cortex; *C, D* Medulla

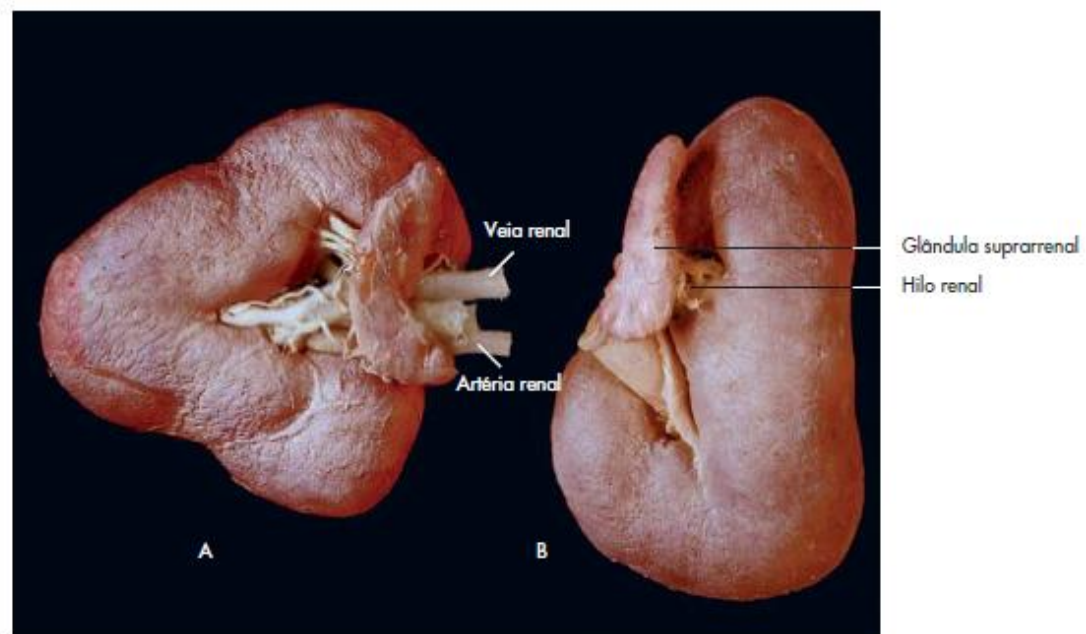
*a* Ureter passing through hilus; *b* Pelvis; *c* Single papilla; *c'* Large aggregate papilla; *d* Calix  
*f* Renal artery and vein

Fig. 429. "Plastoid" cast of renal pelvis of the pig.

*a* Ureter; *b* Pelvis, central cavity; *c* Calices with injected papillary ducts



Fig. 429



**Figura 9-7** Rins direito (A) e esquerdo (B) de um equino (vista ventral); preparação realizada por H. Dier, Viena.



**Figura 9-8** Rim direito em forma de coração de um equino (secção equatorial); preparação realizada por H. Dier, Viena.

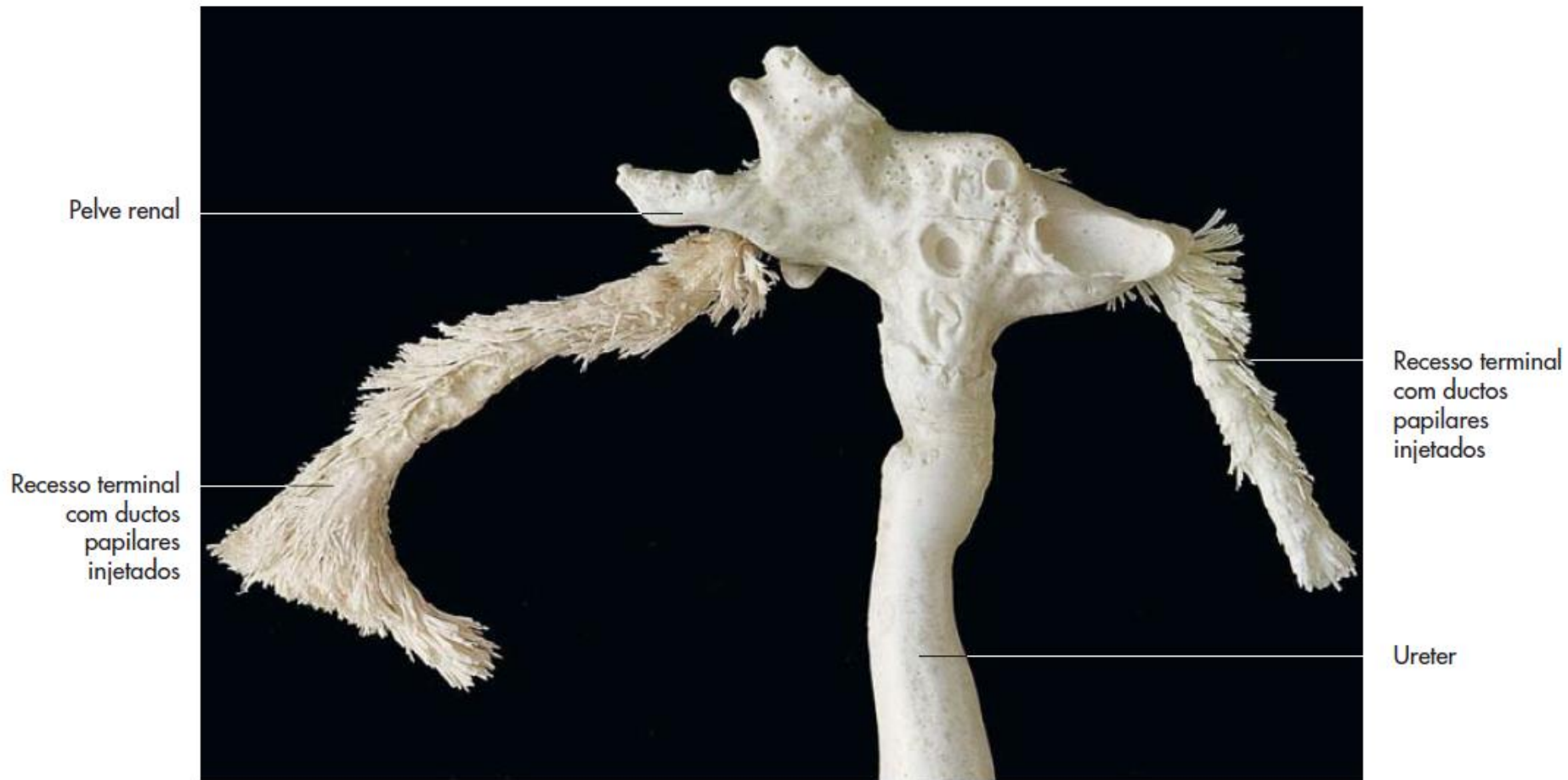


Figura 9-16 Pelve renal do rim esquerdo de um equino (preparado de corrosão).



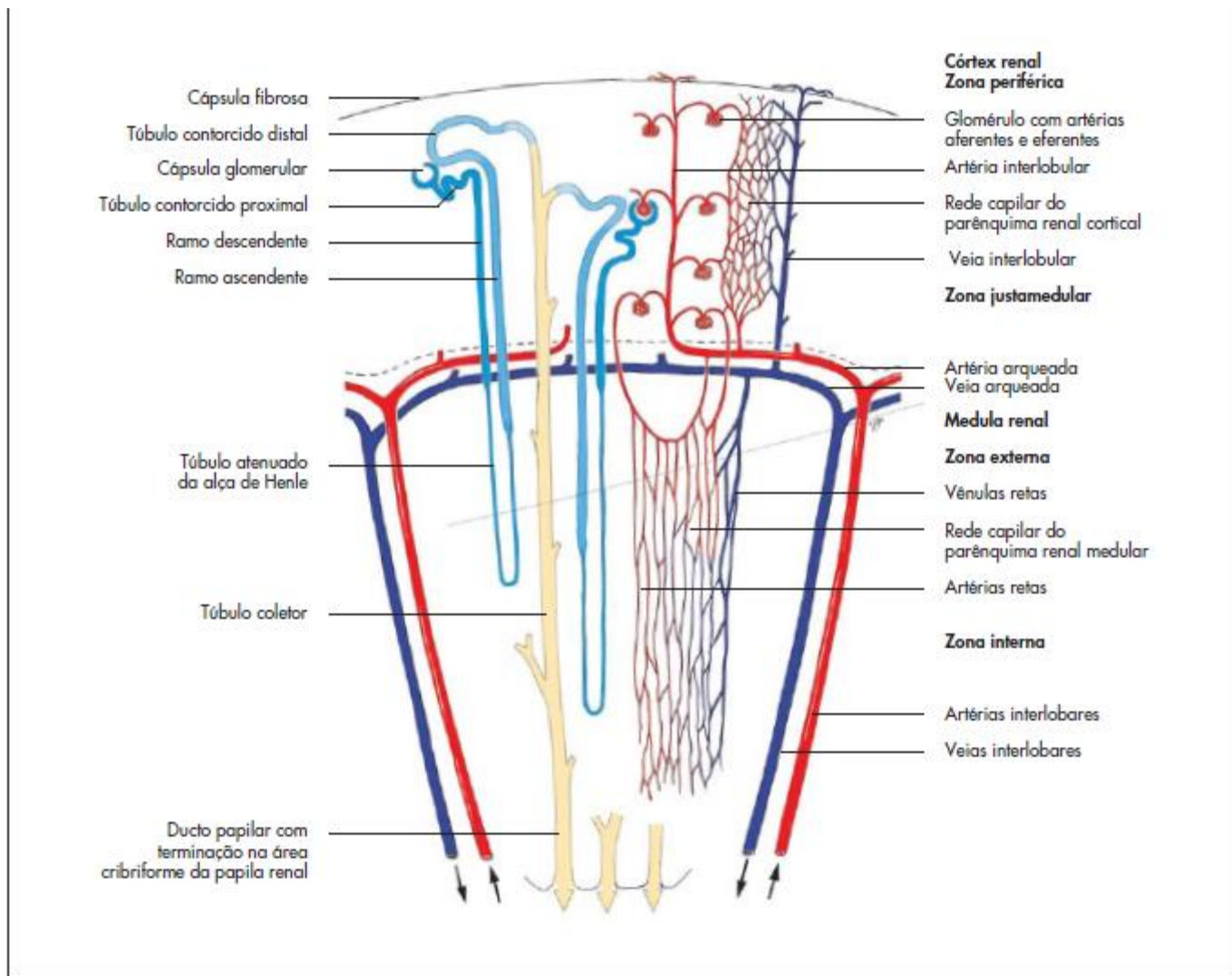


Figura 9-10 Vascularização do rim (representação esquemática).

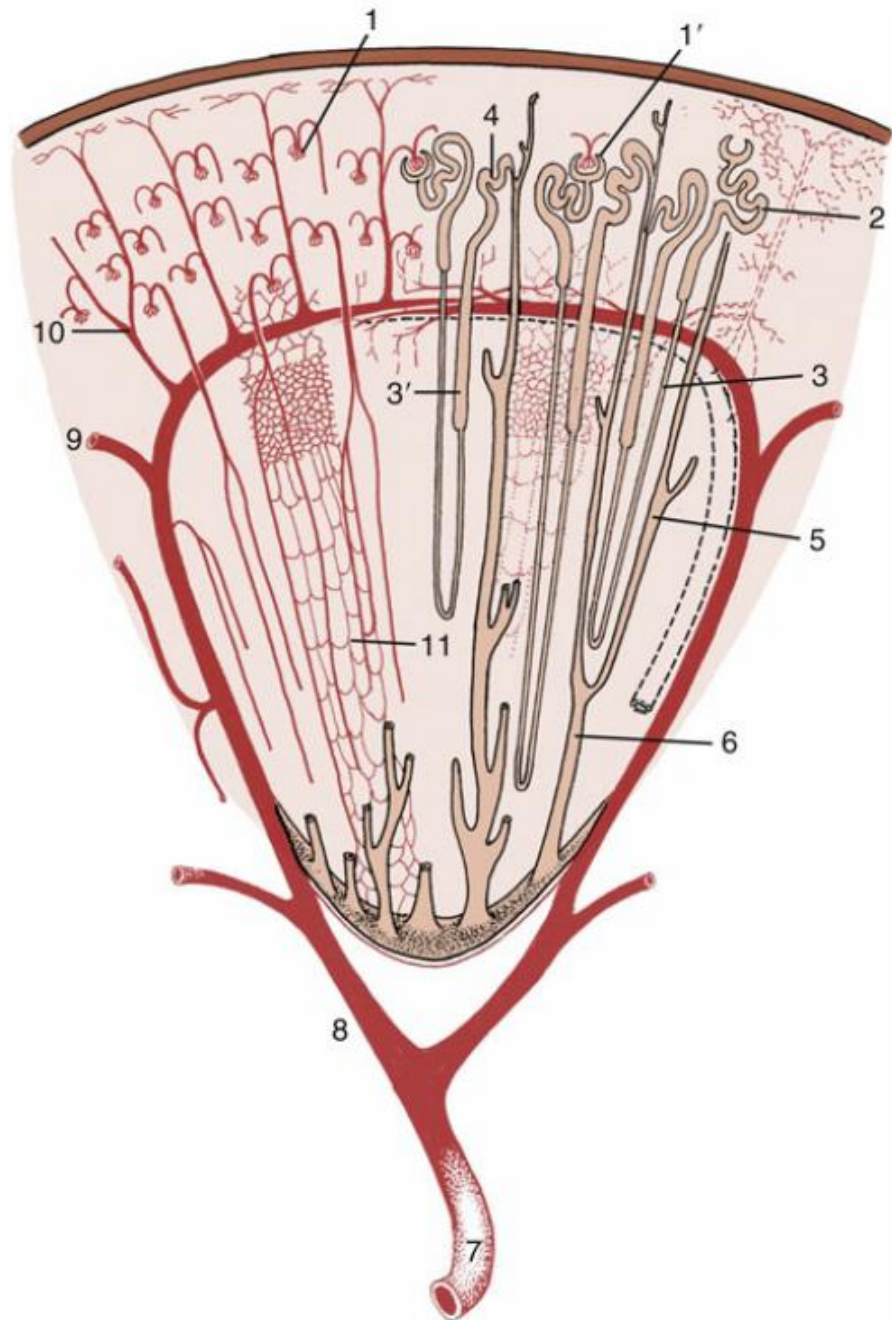


FIG. 5.27 Schematic drawing of a kidney lobe. 1, Glomerulus; 1', renal corpuscle; 2, proximal convoluted tubule; 3, descending limb of nephron; 3', ascending limb; 4, distal convoluted tubule; 5, collecting tubule; 6, papillary duct; 7, renal artery; 8, interlobar artery; 9, arcuate artery; 10, interlobular artery; 11, capillary plexus.

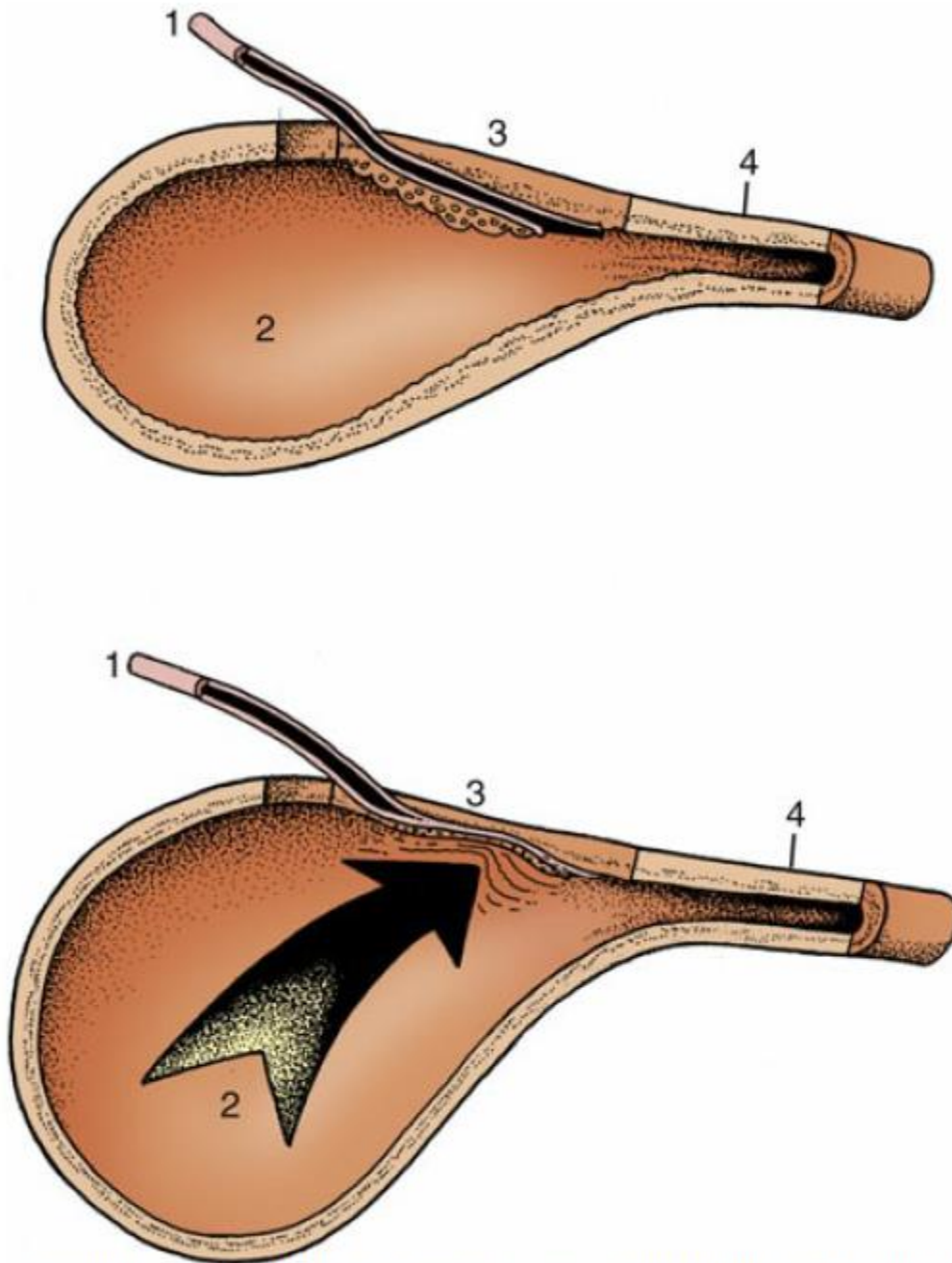
- **Artérias:**

- **Aorta abdominal** (aorta abdominalis)
- **Artéria renal** (a. renalis);
  - Artéria interlobar (a. interlobaris);
  - Artéria arqueada (a. arcuata);
  - Artéria interlobular (a. interlobularis);
    - Artéria glomerular aferente;
    - **Glomérulo**;
    - Artéria glomerular eferente;
  - Ramo capsular (ramus capsularis);

- **Plexo capilar ao redor dos túbulos renais;**

- **Veias:**

- Veia interlobular (v. interlobularis);
- Veia arqueada (v. arcuata);
- Veia interlobar (v. interlobaris);
- **Veia renal** (v. renalis);
- **Veia cava caudal** (v. cava caudalis).



**FIG. 5.31** *Top*, The ureterovesical junction. *Bottom*, Because of its oblique passage through the wall, the ureter is compressed (*arrow*) as the intravesical pressure rises. 1, Ureter; 2, bladder lumen; 3, bladder wall; 4, bladder neck.

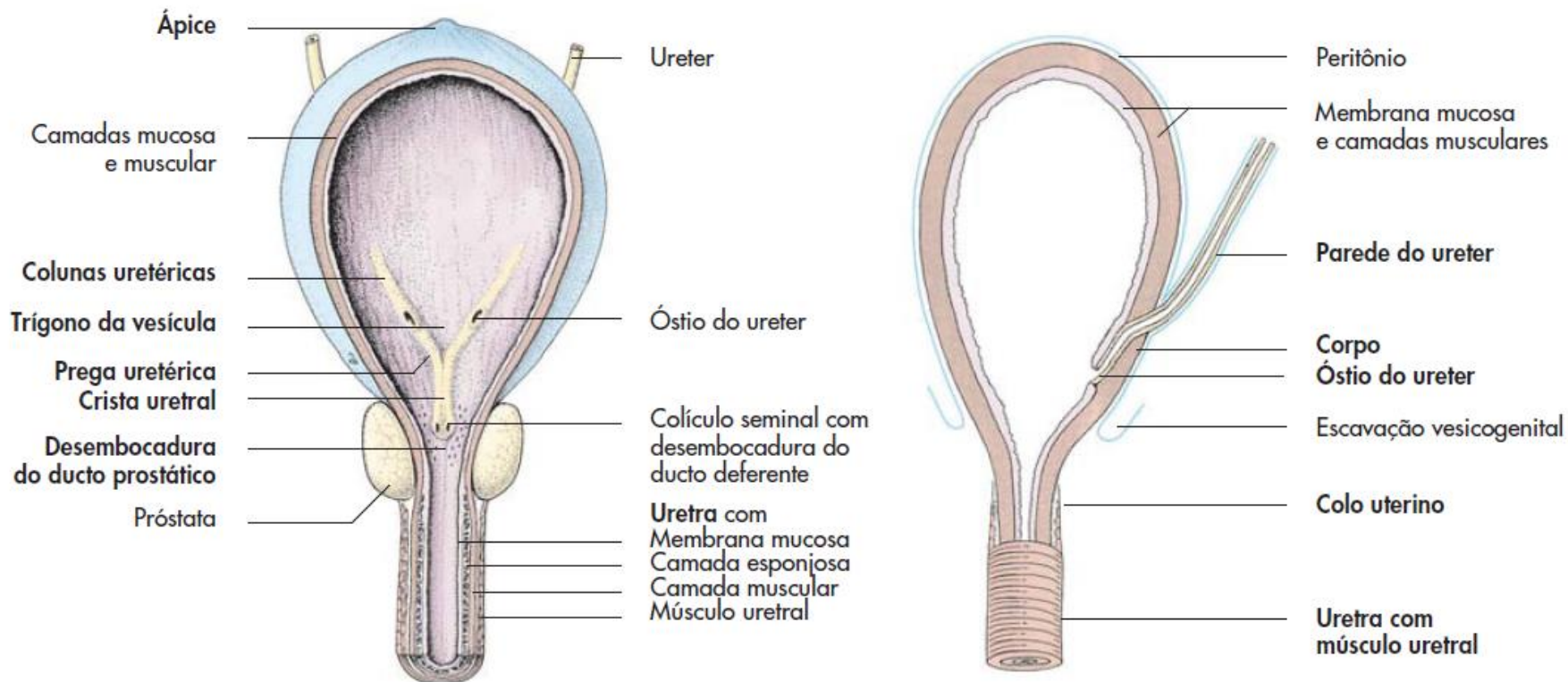
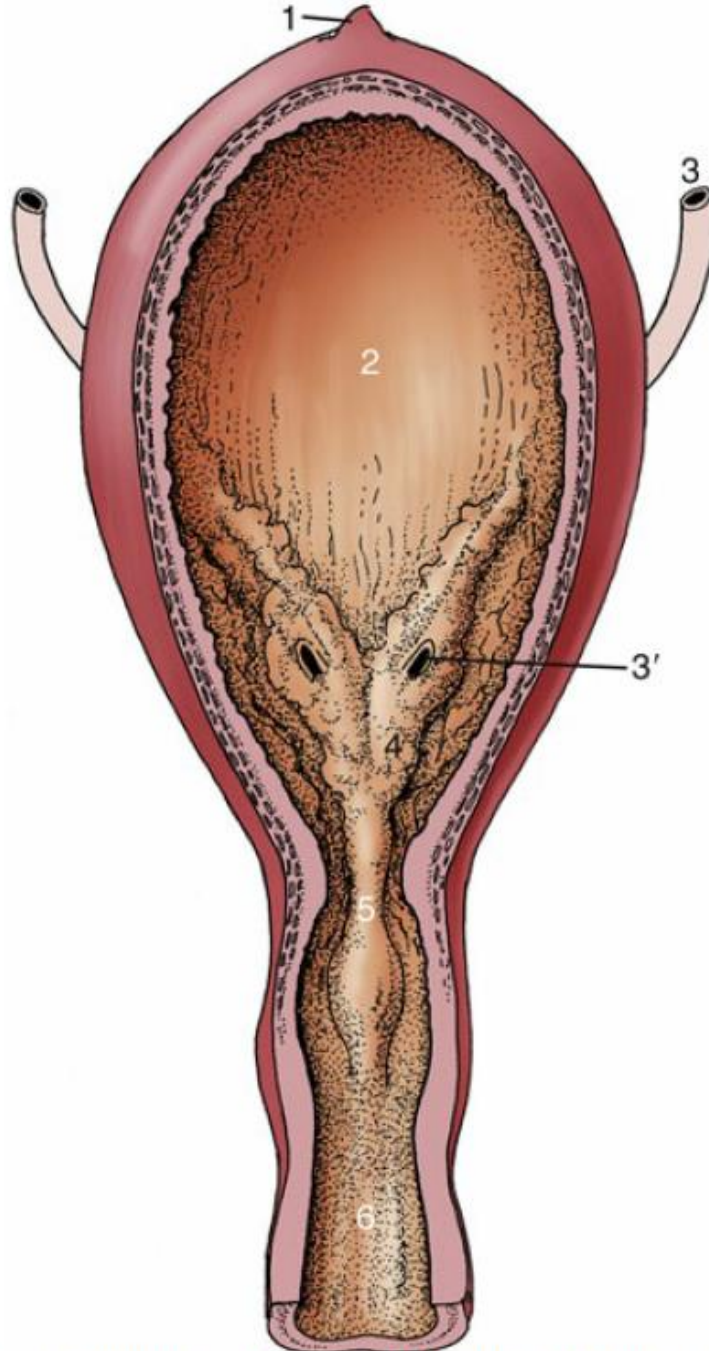
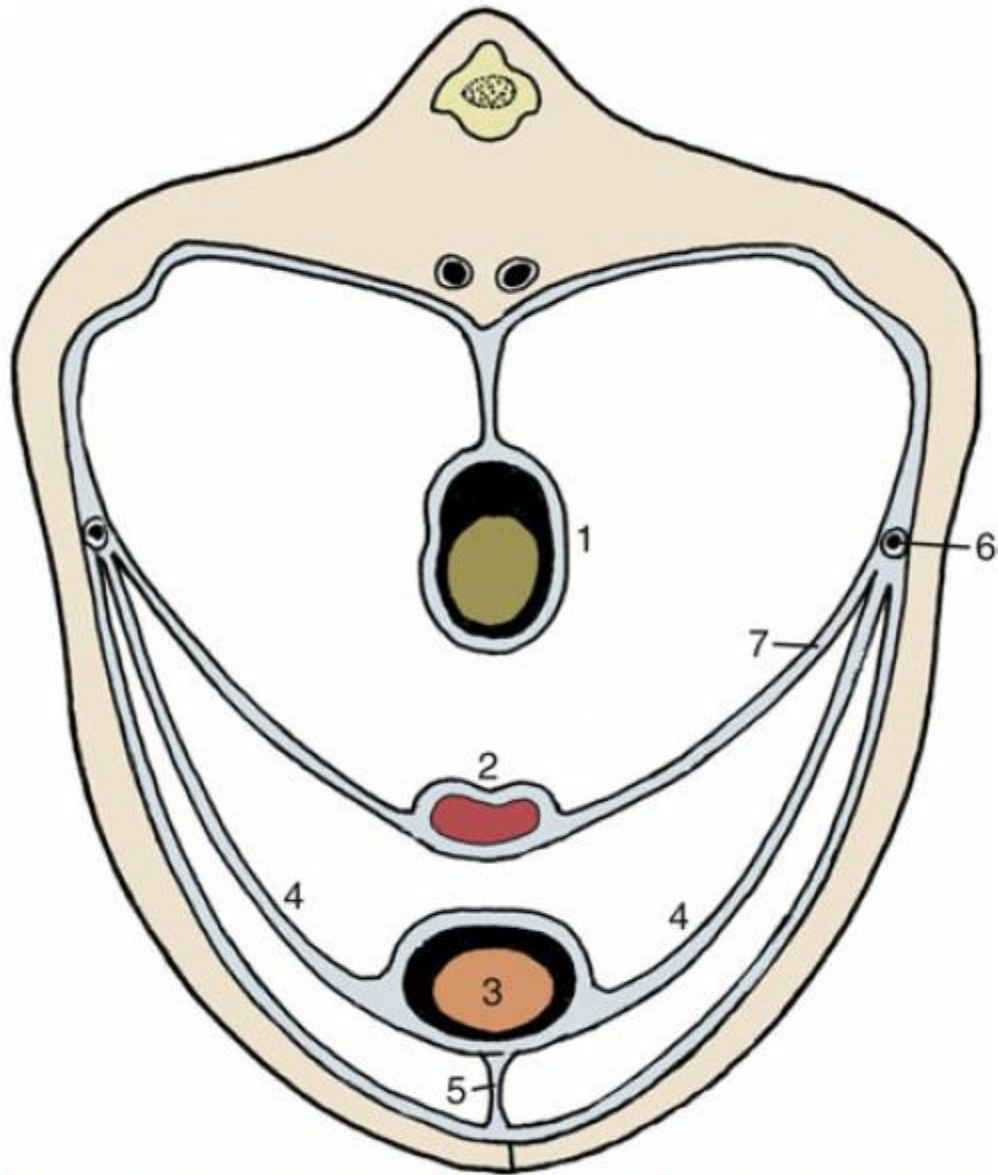


Figura 9-19 Interior da vesícula urinária do cão, vista ventral (esquerda), interseção ureterovesical (direita) (representação esquemática).



**FIG. 5.34** The interior of the urinary bladder. 1, Scar of urachus; 2, bladder; 3, ureter; 3', ureteric orifice; 4, trigone of bladder; 5, urethral crest; 6, urethra.



**FIG. 5.33** Peritoneal disposition in the caudal part of the abdomen. 1, Colon; 2, uterus; 3, bladder; 4, lateral vesical ligaments; 5, median vesical ligament; 6, ureter; 7, broad ligament of uterus (mesometrium).

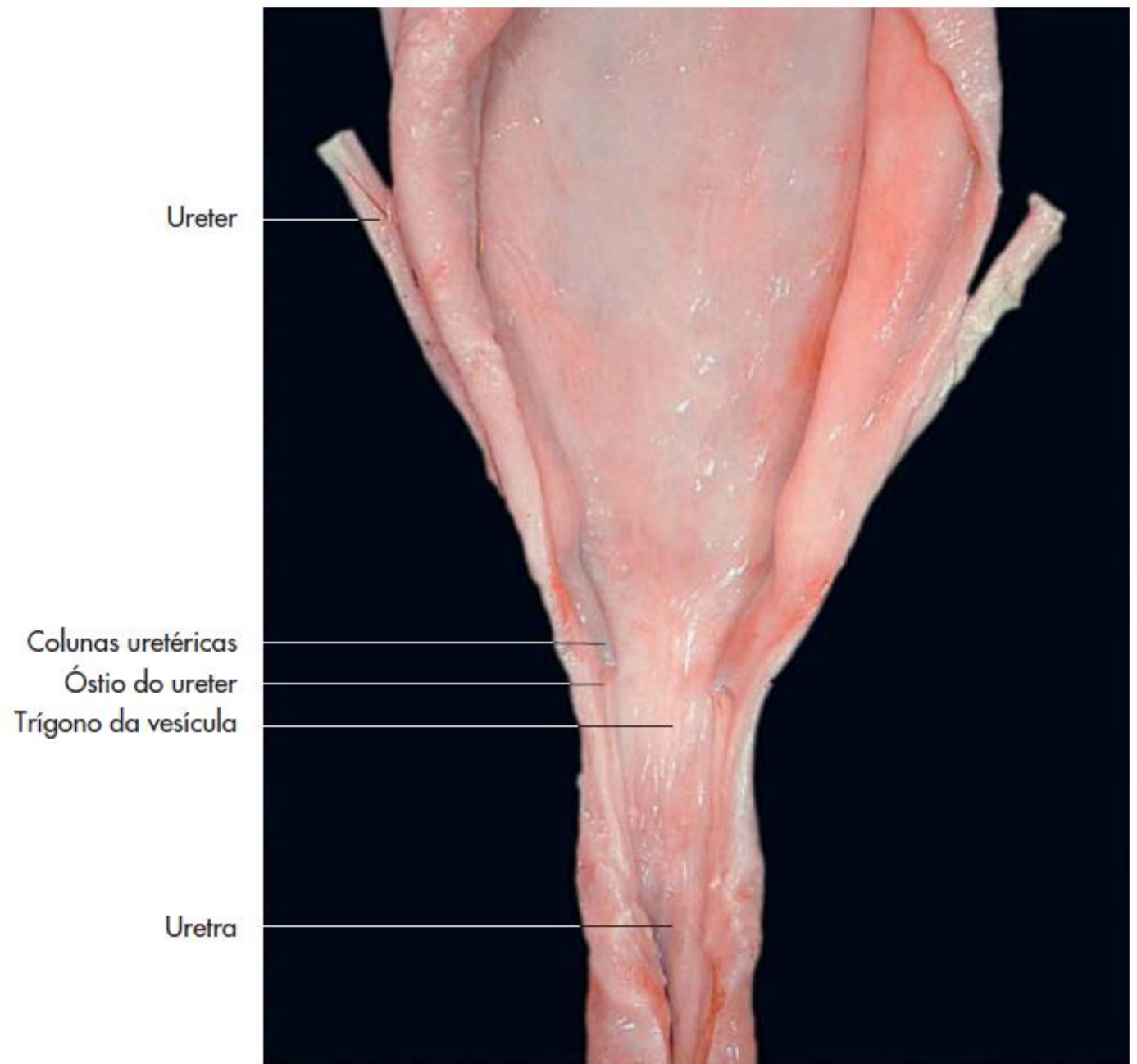
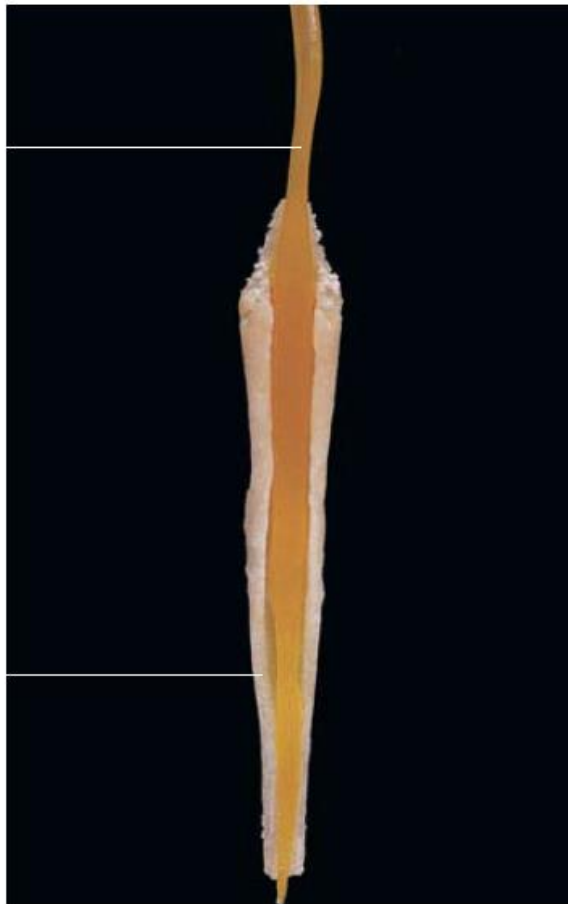


Figura 9-22 Vesícula urinária de um bovino (vista interna), preparação realizada pelo Prof. Dr. W. Pérez, Uruguai.



Parte estreita da uretra  
antes de penetrar o  
osso peniano

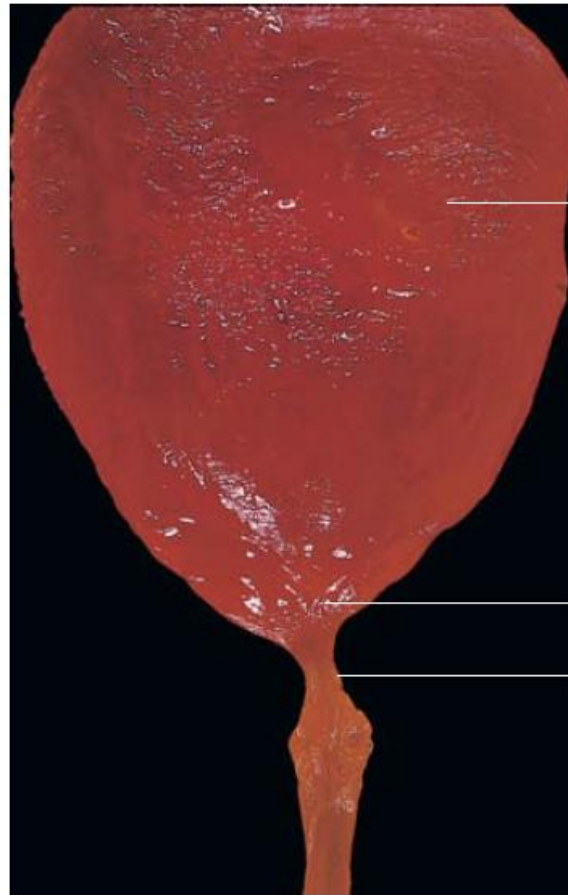
Ossó peniano



Corpo

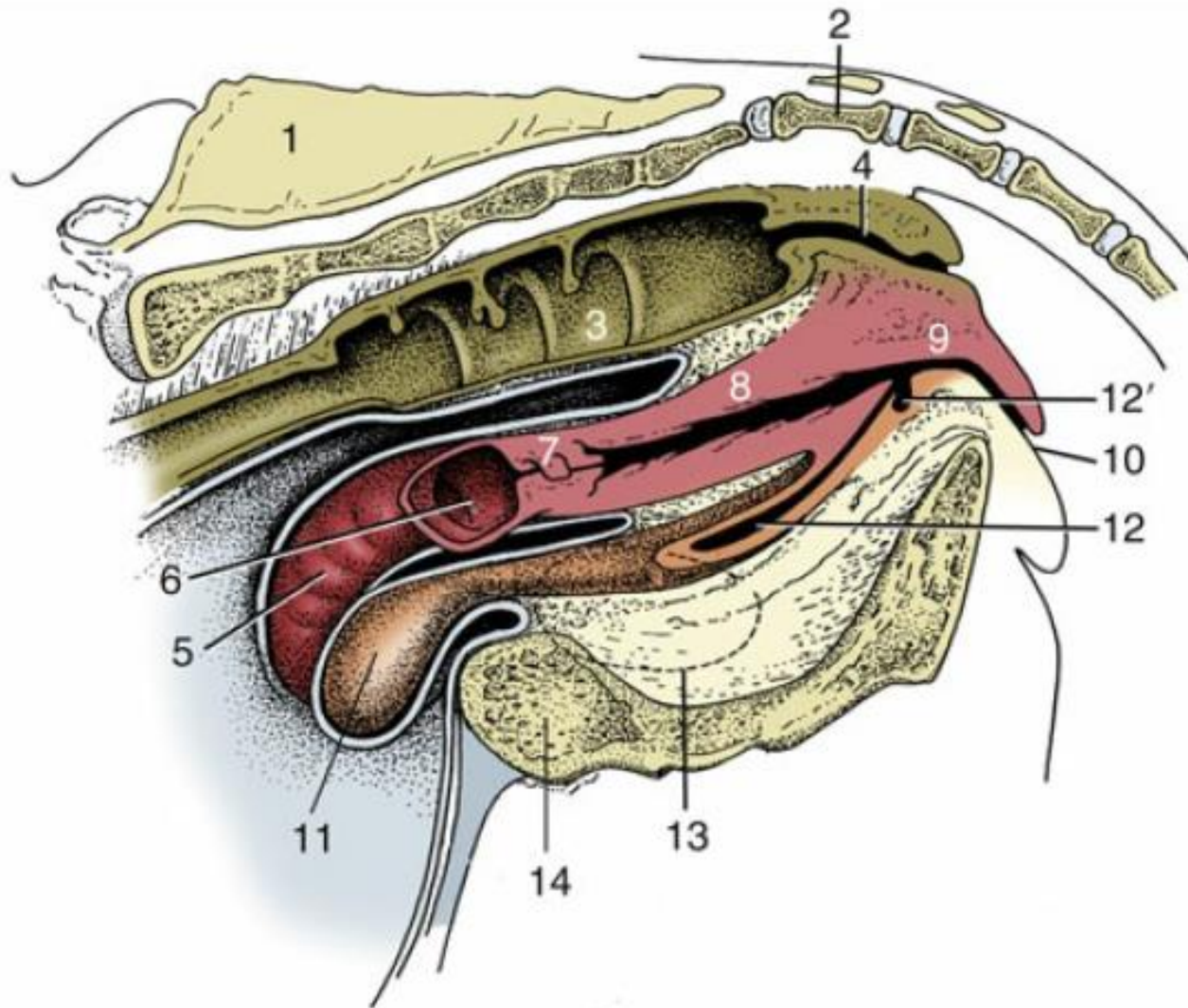
Colo da vesícula

Impressão do  
músculo da vesícula  
urinária no colo  
da vesícula



**Figura 9-20** Uretra de um cão no interior do pênis com osso peniano (vista ventral, preparado de corrosão).

**Figura 9-21** Vesícula urinária e origem da uretra (preparado de corrosão).



**FIG. 5.32** Median section of the bovine pelvis. 1, Sacrum; 2, first caudal vertebra; 3, interior of rectum; 4, anal canal; 5, exterior of right uterine horn; 6, interior of stump of left uterine horn; 7, cervix; 8, vagina; 9, vestibule; 10, vulva; 11, exterior of bladder; 12, urethra; 12', suburethral diverticulum; 13, obturator

