

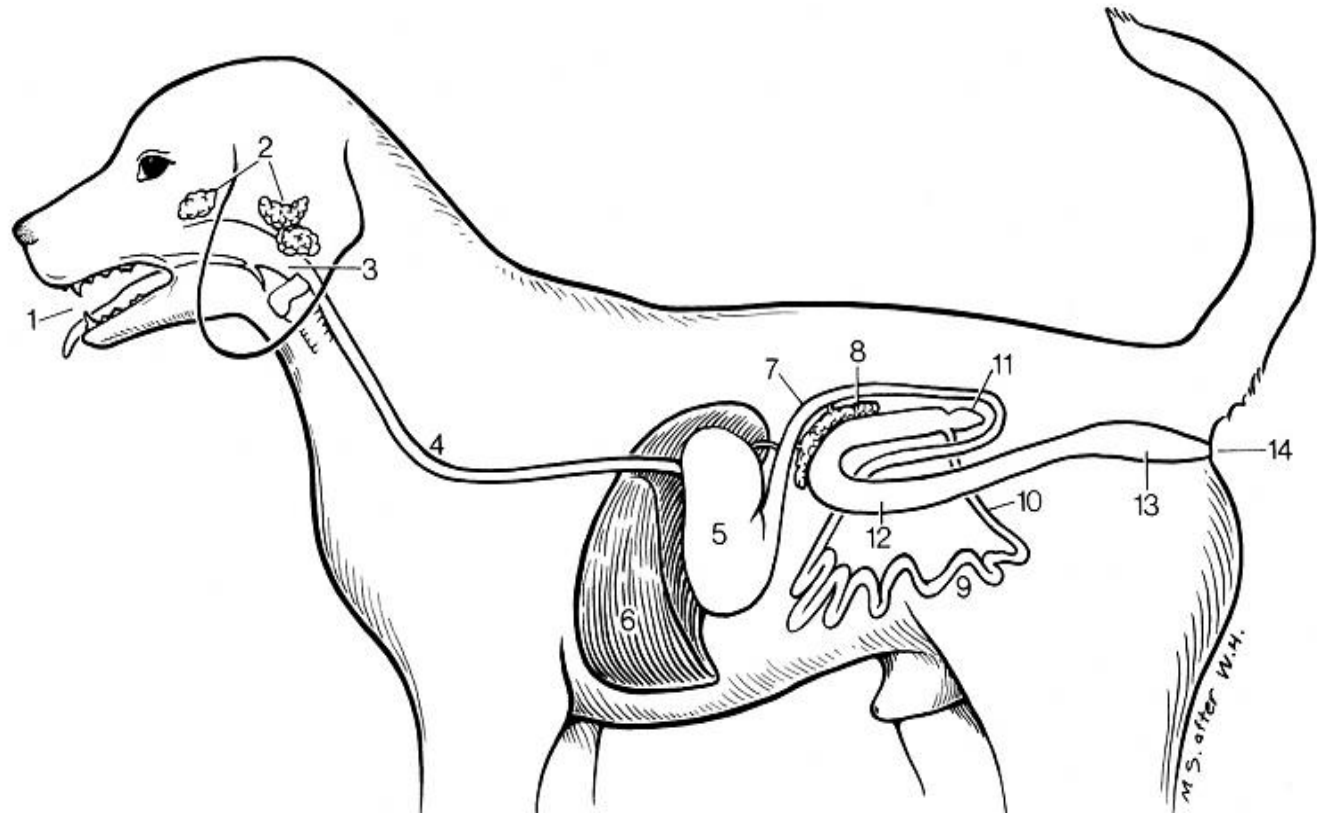
# Sistema Digestório

Cavidade oral e língua

31-08-2023

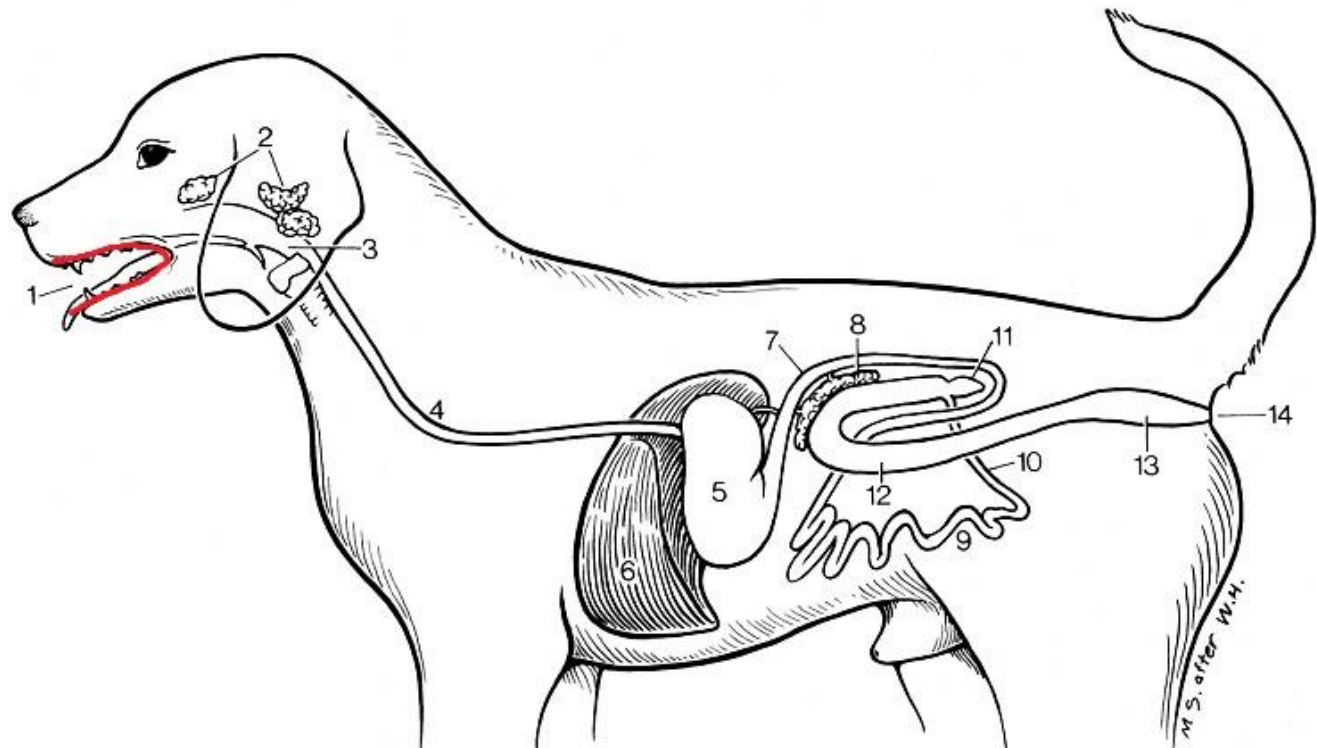
# Divisão anatômica do sistema digestório (Nickel)

- Boca
- Faringe
- Canal alimentar
  - Esôfago
  - Estômago
  - Intestino delgado
  - Intestino grosso
  - Canal anal
- Glândulas acessórias
  - Glândulas salivares
  - Fígado
  - Pâncreas



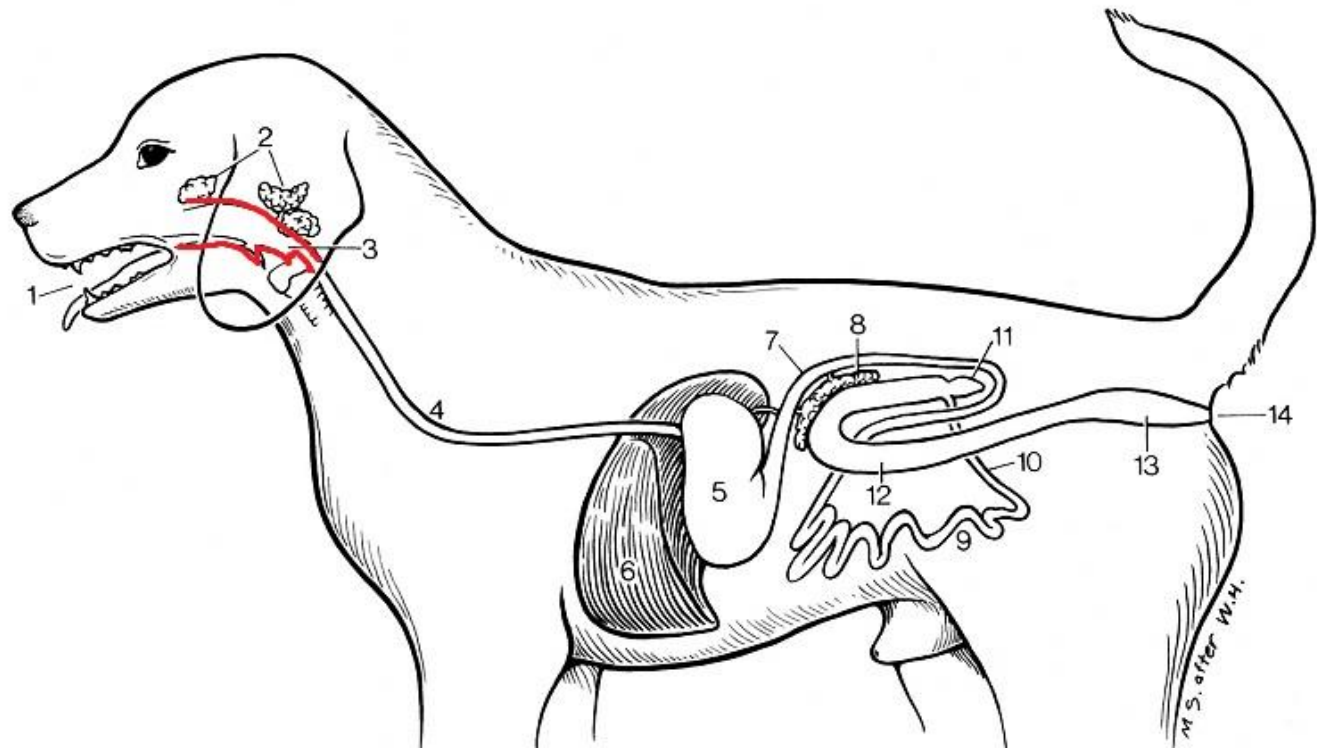
# Divisão anatômica do sistema digestório (Nickel)

- **Boca**
- Faringe
- Canal alimentar
  - Esôfago
  - Estômago
  - Intestino delgado
  - Intestino grosso
  - Canal anal
- Glândulas acessórias
  - Glândulas salivares
  - Fígado
  - Pâncreas



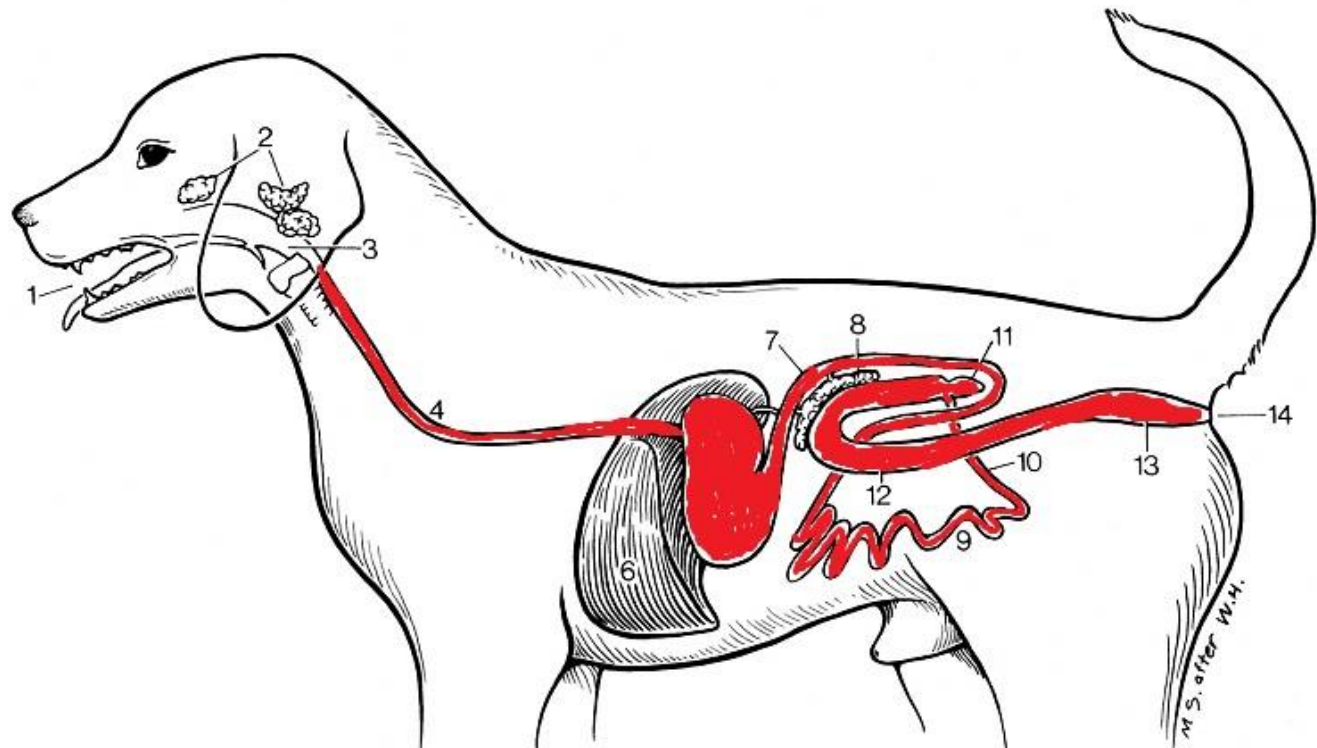
# Divisão anatômica do sistema digestório (Nickel)

- Boca
- **Faringe**
- Canal alimentar
  - Esôfago
  - Estômago
  - Intestino delgado
  - Intestino grosso
  - Canal anal
- Glândulas acessórias
  - Glândulas salivares
  - Fígado
  - Pâncreas



# Divisão anatômica do sistema digestório (Nickel)

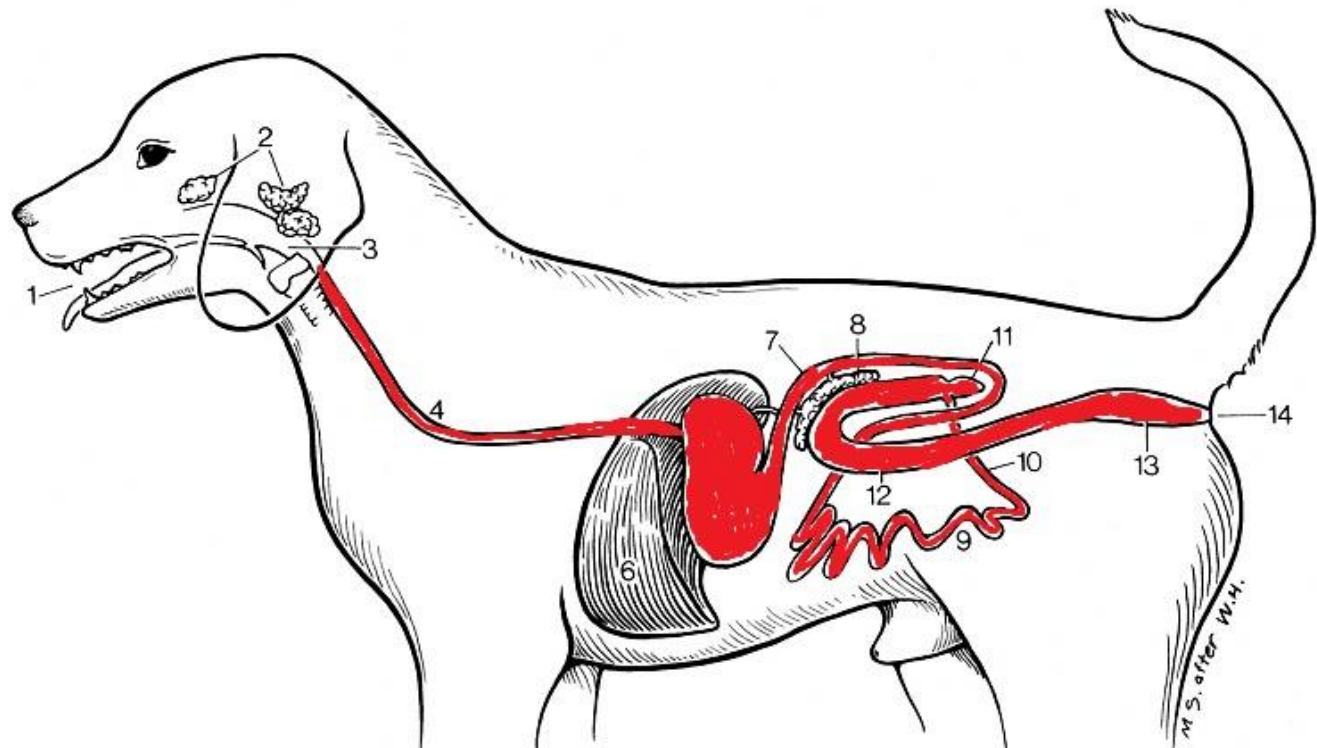
- Boca
- Faringe
- **Canal alimentar**
  - Esôfago
  - Estômago
  - Intestino delgado
  - Intestino grosso
  - Canal anal
- Glândulas acessórias
  - Glândulas salivares
  - Fígado
  - Pâncreas





# Divisão anatômica do sistema digestório (Nickel)

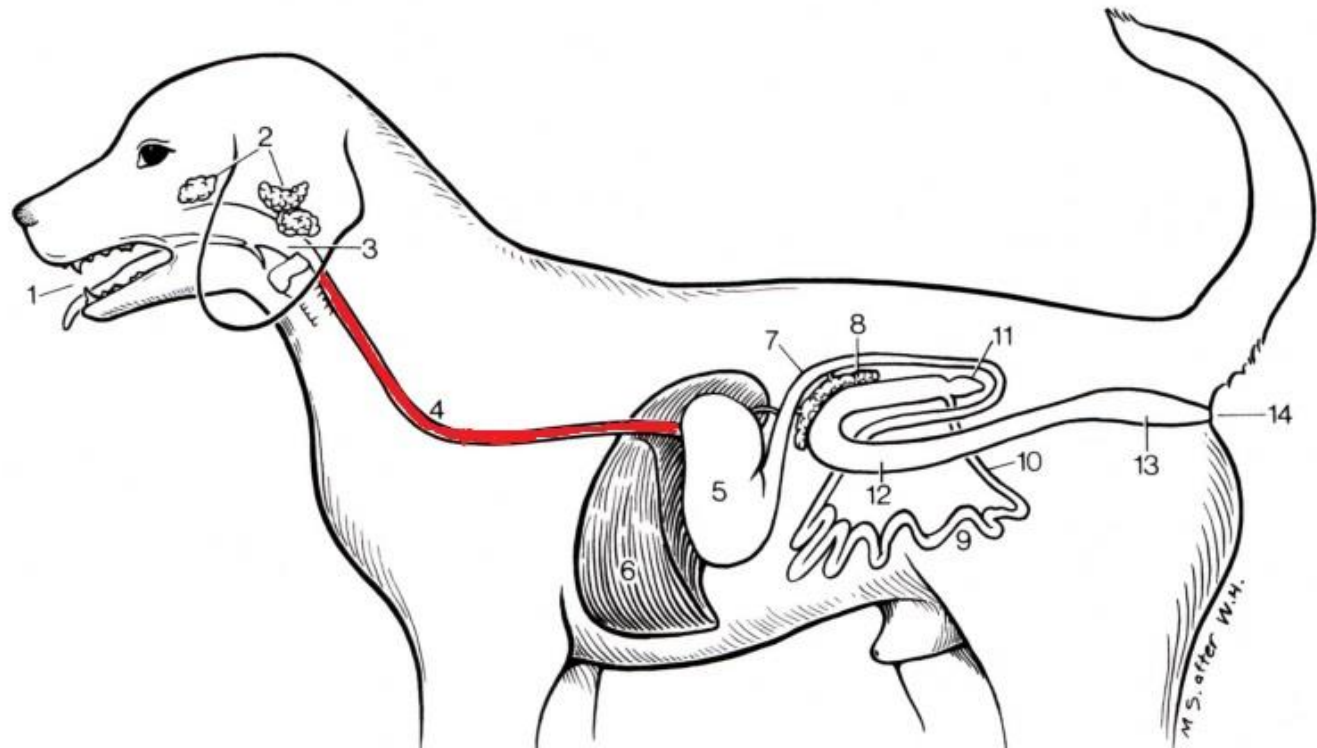
- Boca
- Faringe
- **Canal alimentar**
  - Esôfago
  - Estômago
  - Intestino delgado
  - Intestino grosso
  - Canal anal
- Glândulas acessórias
  - Glândulas salivares
  - Fígado
  - Pâncreas





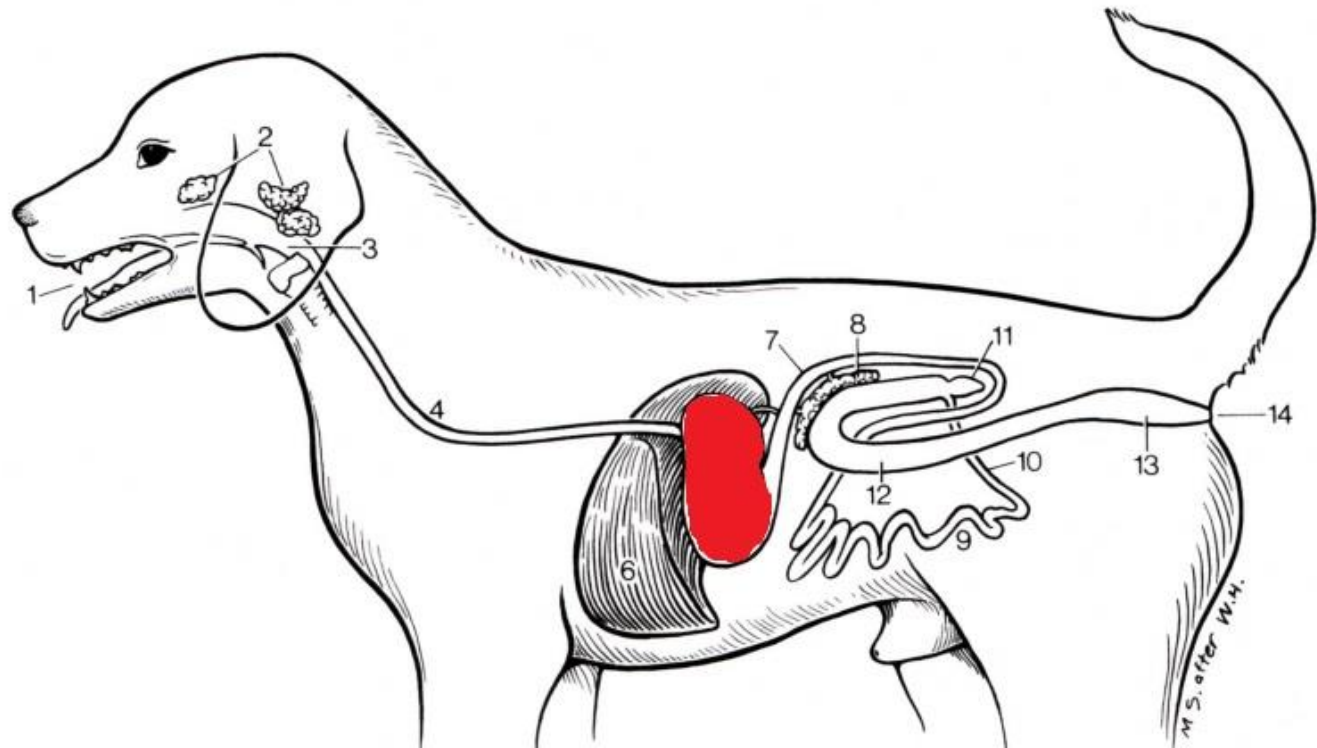
# Divisão anatômica do sistema digestório (Nickel)

- Boca
- Faringe
- Canal alimentar
  - **Esôfago**
  - Estômago
  - Intestino delgado
  - Intestino grosso
  - Canal anal
- Glândulas acessórias
  - Glândulas salivares
  - Fígado
  - Pâncreas



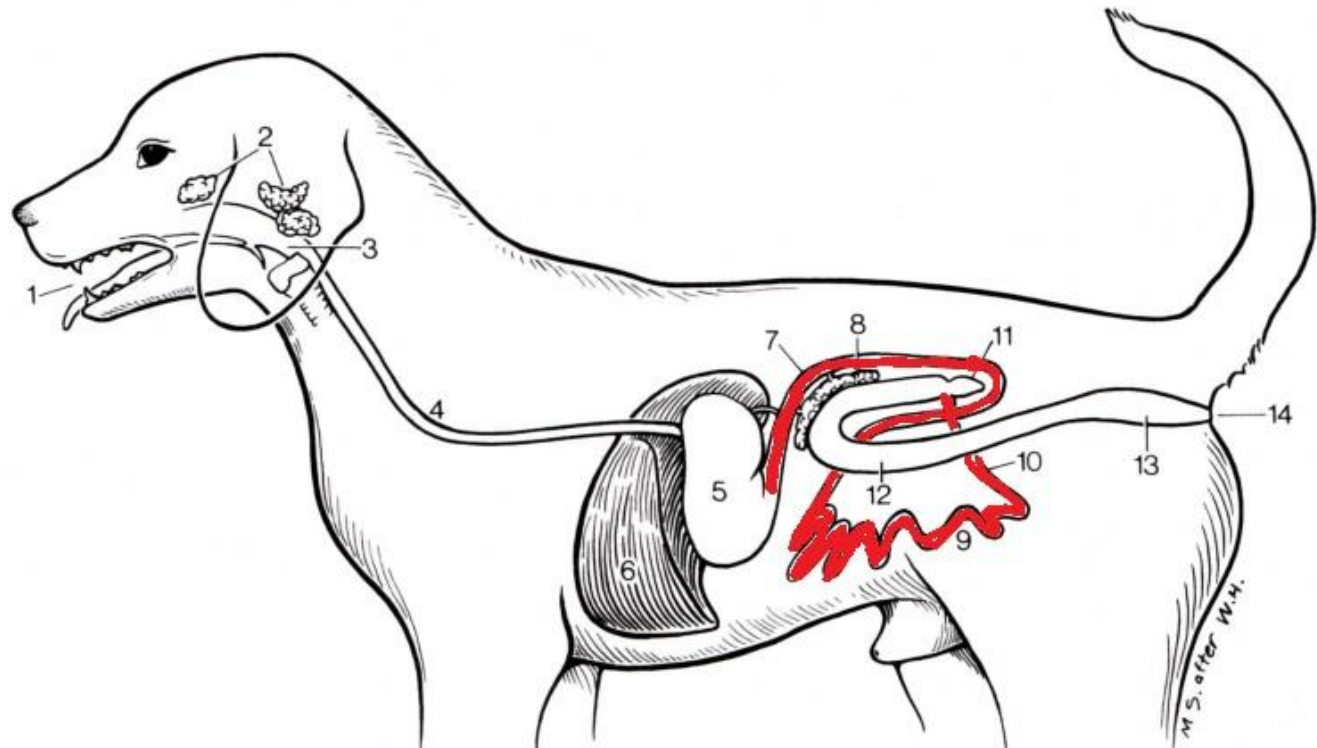
# Divisão anatômica do sistema digestório (Nickel)

- Boca
- Faringe
- Canal alimentar
  - Esôfago
  - **Estômago**
  - Intestino delgado
  - Intestino grosso
  - Canal anal
- Glândulas acessórias
  - Glândulas salivares
  - Fígado
  - Pâncreas



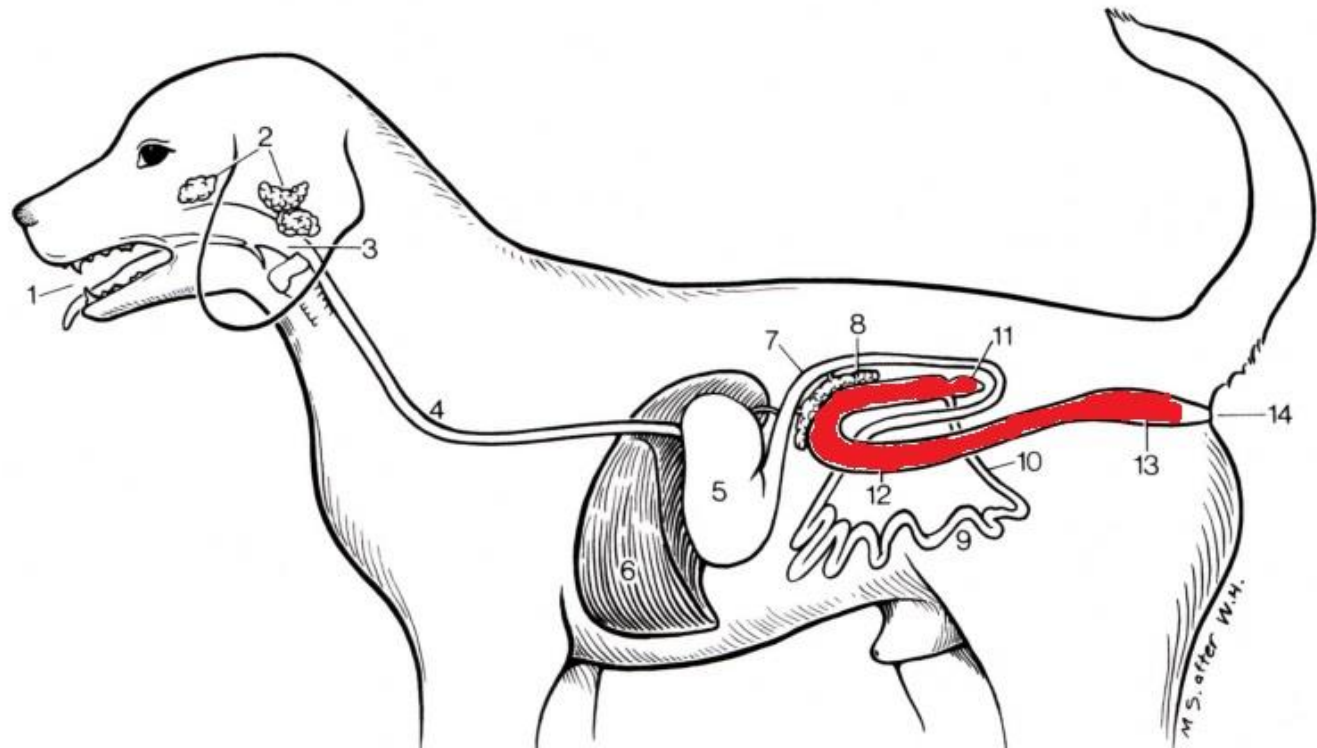
# Divisão anatômica do sistema digestório (Nickel)

- Boca
- Faringe
- Canal alimentar
  - Esôfago
  - Estômago
  - **Intestino delgado**
  - Intestino grosso
  - Canal anal
- Glândulas acessórias
  - Glândulas salivares
  - Fígado
  - Pâncreas



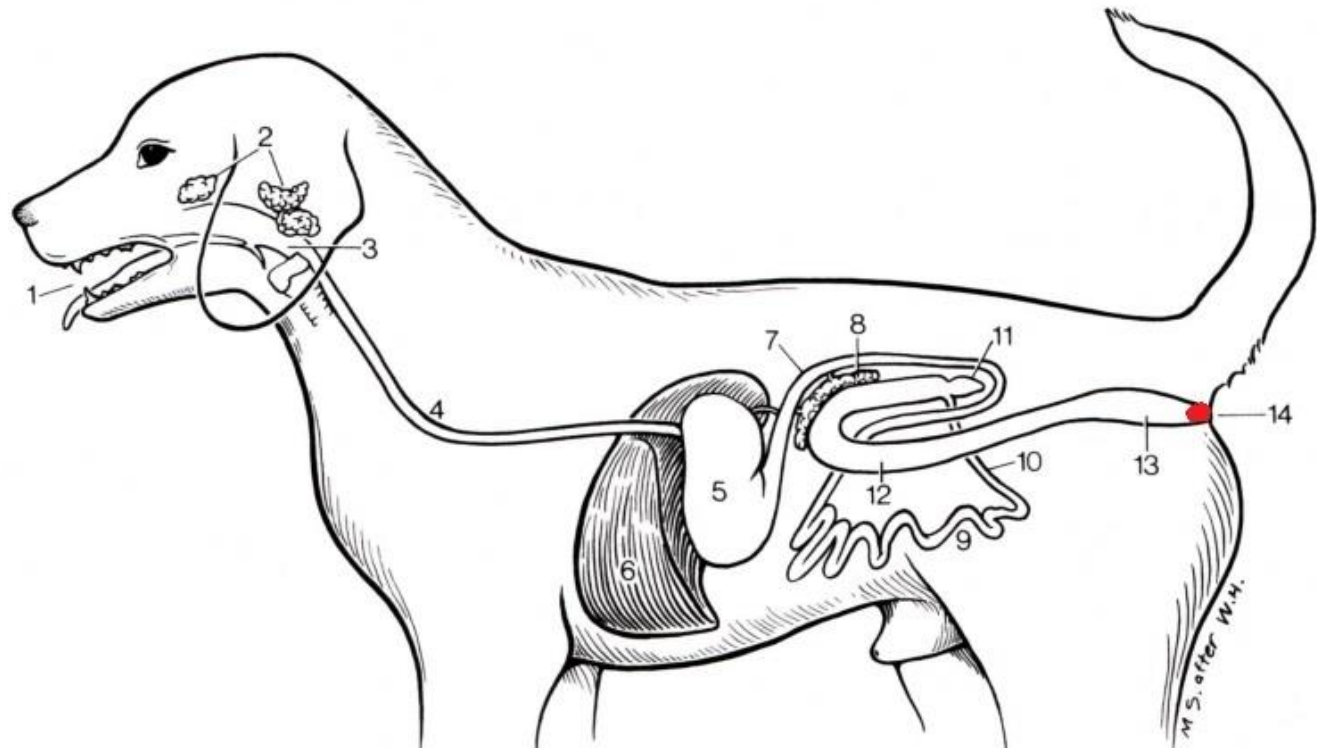
# Divisão anatômica do sistema digestório (Nickel)

- Boca
- Faringe
- Canal alimentar
  - Esôfago
  - Estômago
  - Intestino delgado
  - **Intestino grosso**
  - Canal anal
- Glândulas acessórias
  - Glândulas salivares
  - Fígado
  - Pâncreas



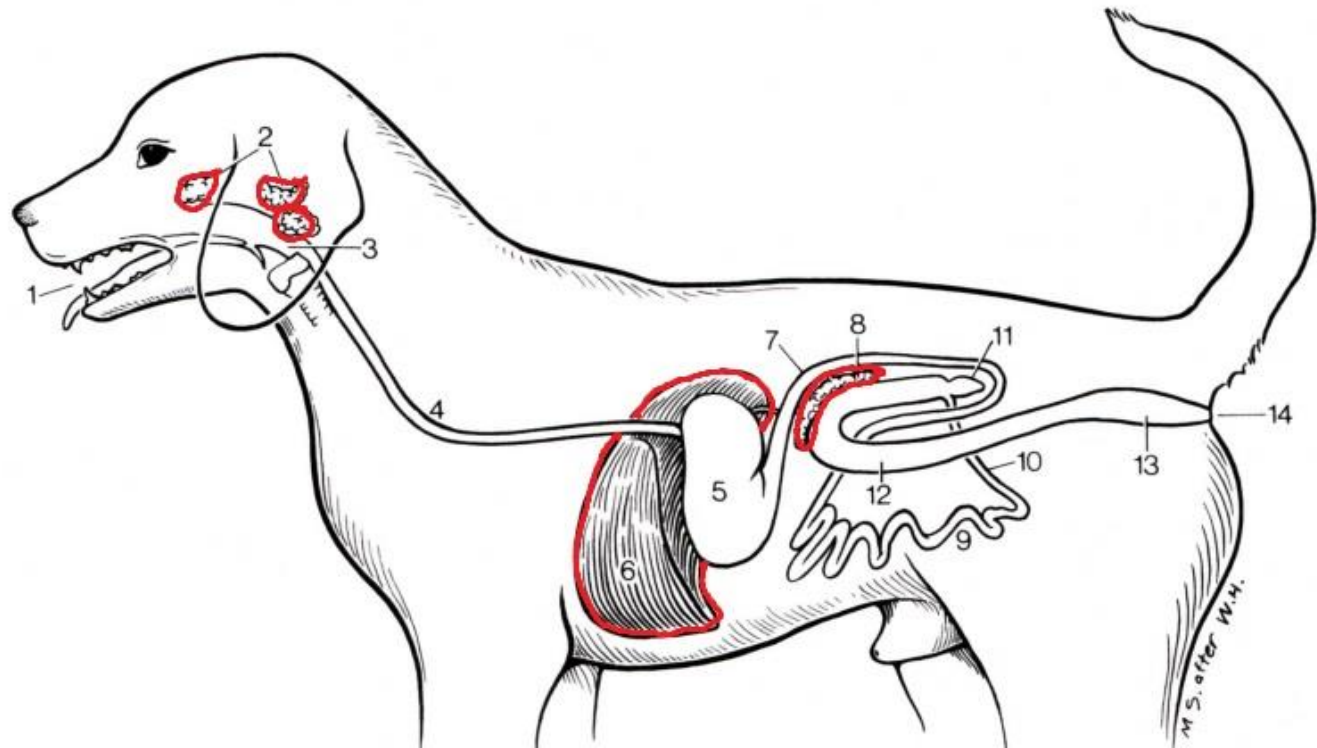
# Divisão anatômica do sistema digestório (Nickel)

- Boca
- Faringe
- Canal alimentar
  - Esôfago
  - Estômago
  - Intestino delgado
  - Intestino grosso
  - **Canal anal**
- Glândulas acessórias
  - Glândulas salivares
  - Fígado
  - Pâncreas



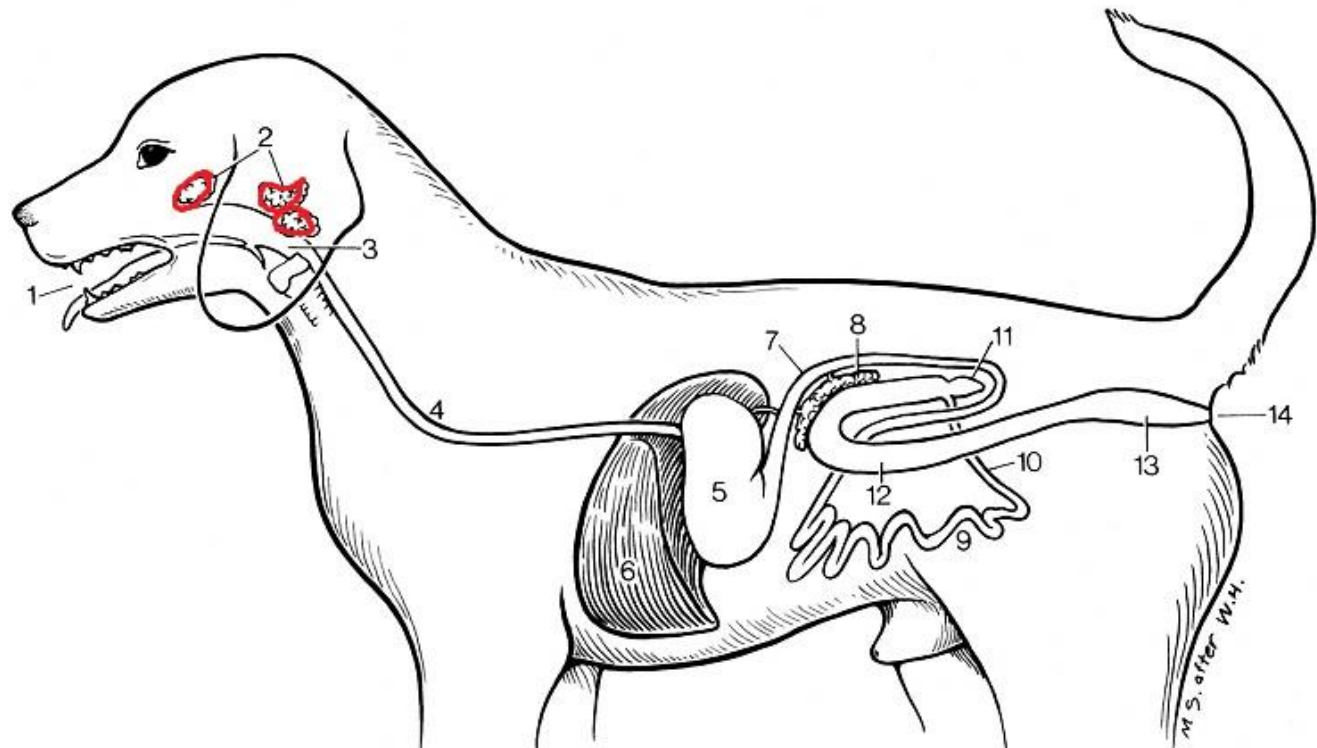
# Divisão anatômica do sistema digestório (Nickel)

- Boca
- Faringe
- Canal alimentar
  - Esôfago
  - Estômago
  - Intestino delgado
  - Intestino grosso
  - Canal anal
- **Glândulas acessórias**
  - Glândulas salivares
  - Fígado
  - Pâncreas



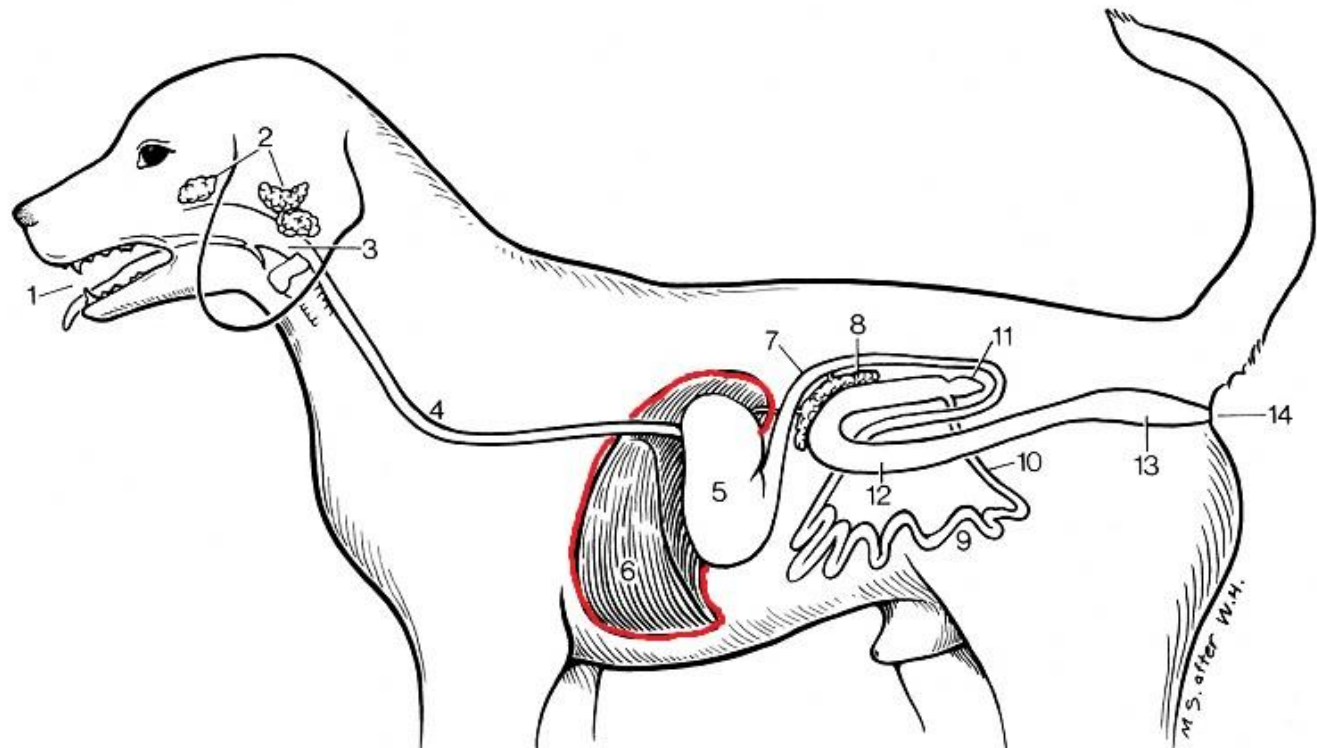
# Divisão anatômica do sistema digestório (Nickel)

- Boca
- Faringe
- Canal alimentar
  - Esôfago
  - Estômago
  - Intestino delgado
  - Intestino grosso
  - Canal anal
- Glândulas acessórias
  - **Glândulas salivares:**
  - Fígado
  - Pâncreas



# Divisão anatômica do sistema digestório (Nickel)

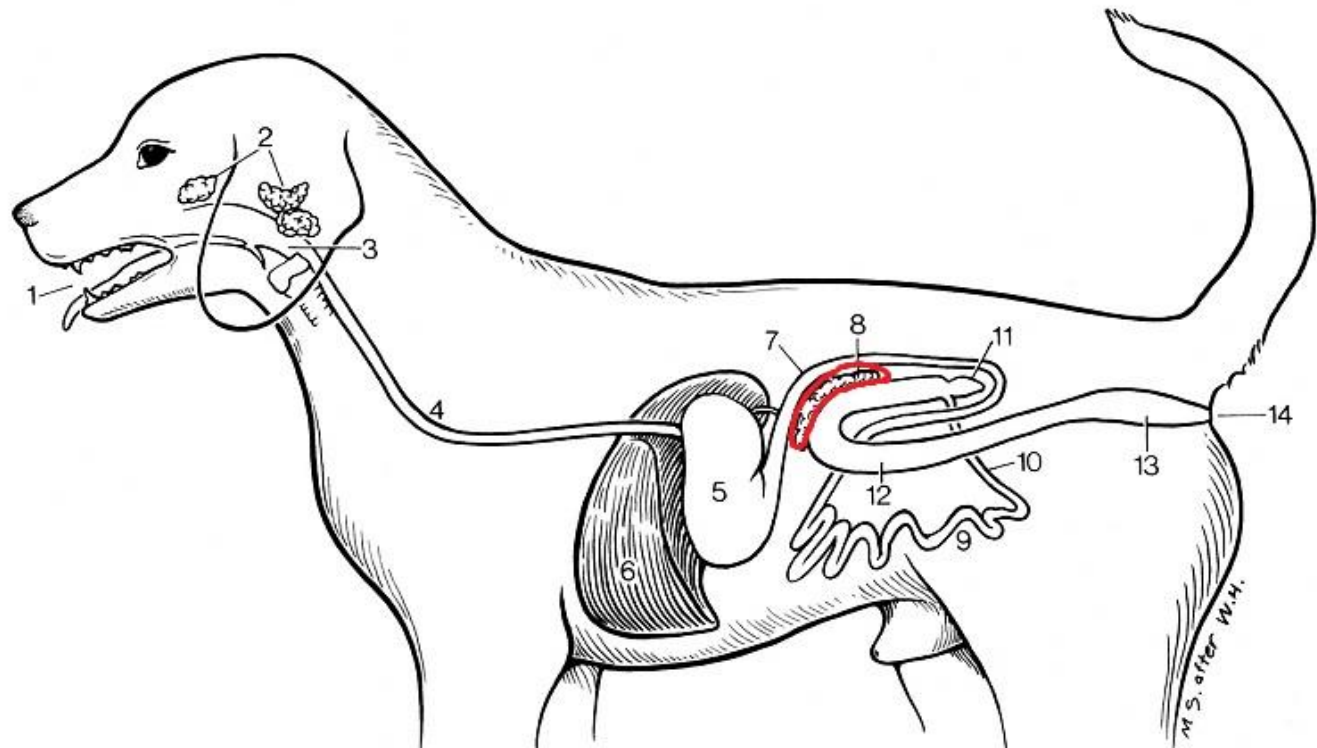
- Boca
- Faringe
- Canal alimentar
  - Esôfago
  - Estômago
  - Intestino delgado
  - Intestino grosso
  - Canal anal
- Glândulas acessórias
  - Glândulas salivares
  - Fígado
  - Pâncreas





# Divisão anatômica do sistema digestório (Nickel)

- Boca
- Faringe
- Canal alimentar
  - Esôfago
  - Estômago
  - Intestino delgado
  - Intestino grosso
  - Canal anal
- Glândulas acessórias
  - Glândulas salivares
  - Fígado
  - **Pâncreas**



# Nômina Anatômica Veterinária

## SYSTEMA DIGESTORIUM

### 1 - CAVUM ORIS

Glandulae salivariae minores

Glandulae salivariae majores

Dentes

Lingua

### 2 - PHARYNX

### 3 - CANALIS ALIMENTARIUS

#### 3.1 - ESOPHAGUS [OESOPHAGUS]

#### 3.2 - VENTRICULUS [GASTER]

Proventriculus

Rumen

Reticulum

Omasum

Abomasum

#### 3.3 - INTESTINUM TENUE

Duodenum

Jejunum

Ileum

#### 3.4 - INTESTINUM CRASSUM

Cecum [Caecum]

Colon

Rectum

Canalis analis

### 4 - HEPAR

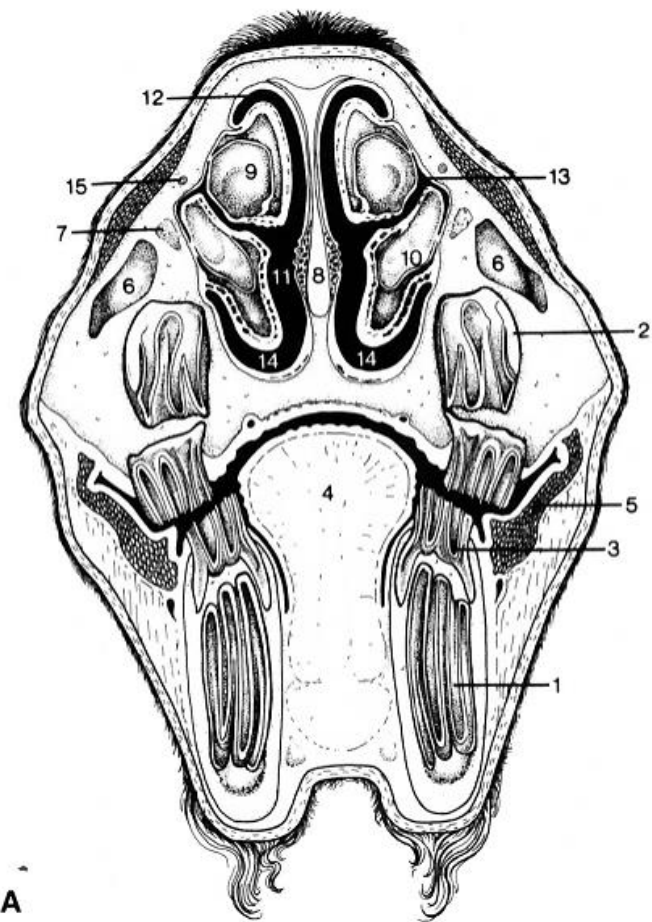
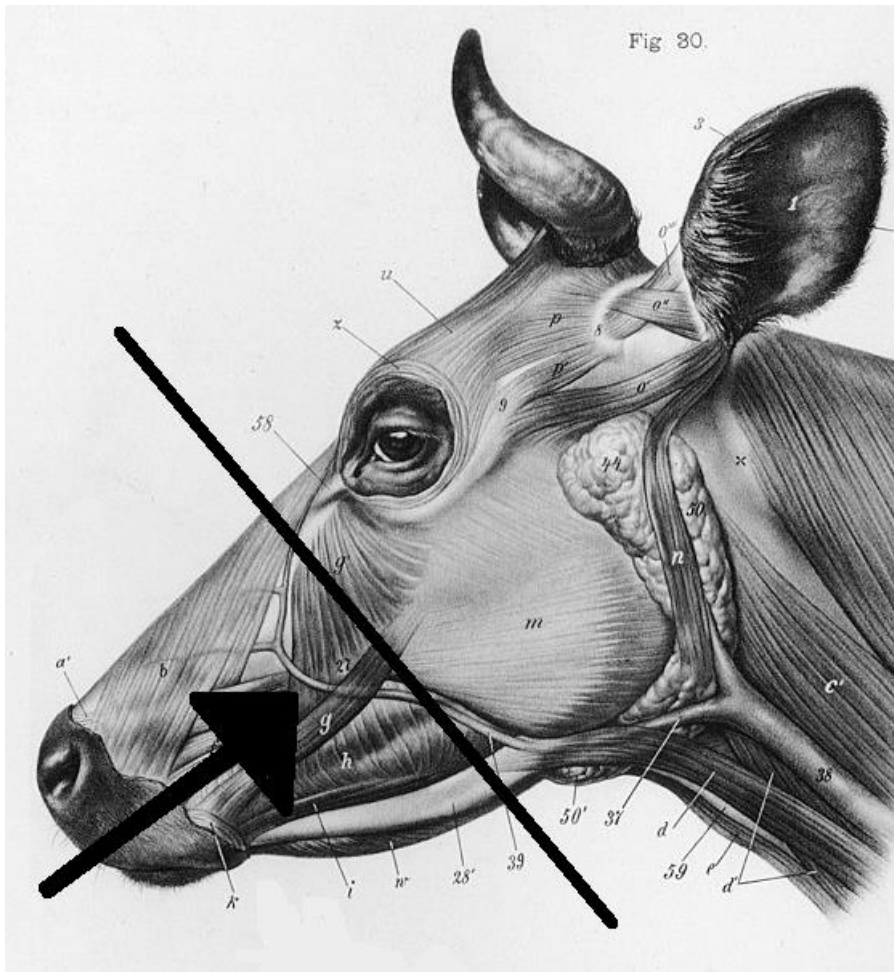
Vesica biliaris [Vesica fellea]

Ductus choledochus

### 5 - PANCREAS

# Cavidade oral

- Vestíbulo oral
- Cavidade oral propriamente dita





# Lábios

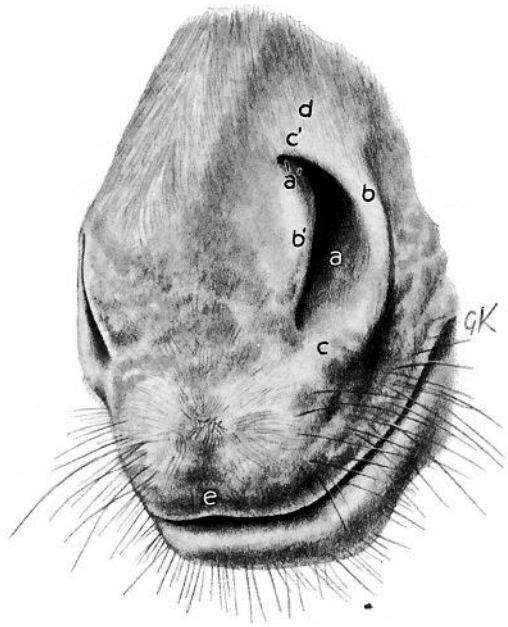


Fig. 275 with narrow nostrils

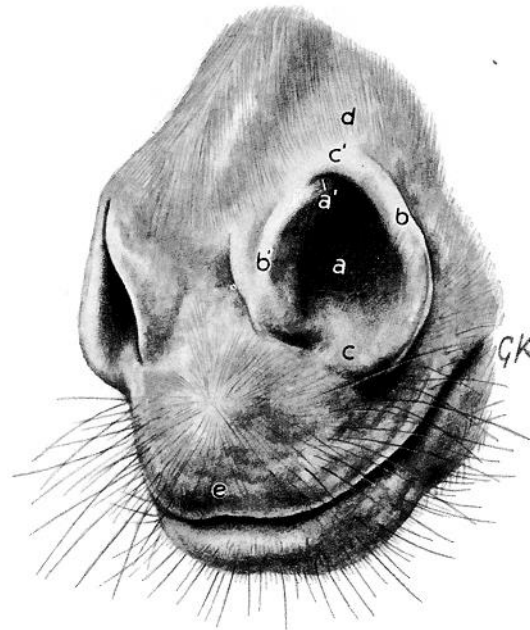


Fig. 276 with dilated nostrils

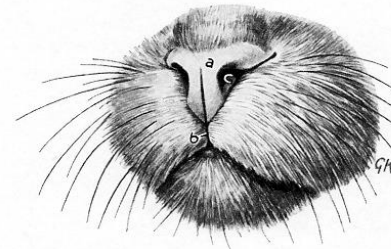


Fig. 269 (Cat)

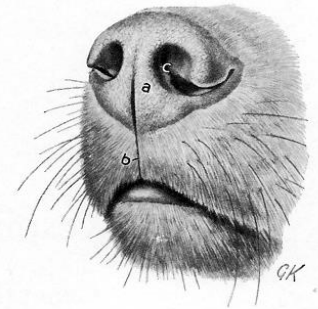


Fig. 270 (Dog)

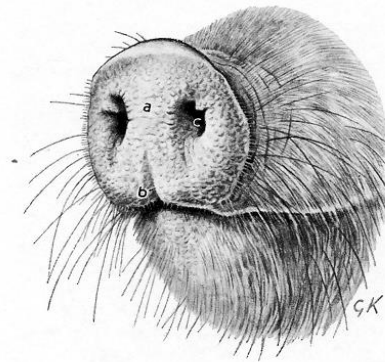


Fig. 271 (Pig)

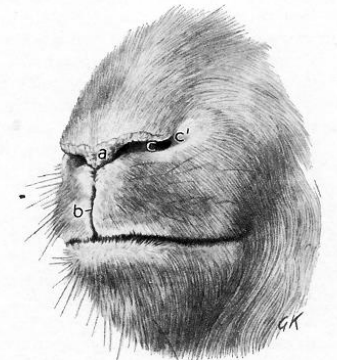


Fig. 272 (Goat)



Fig. 273 (Sheep)

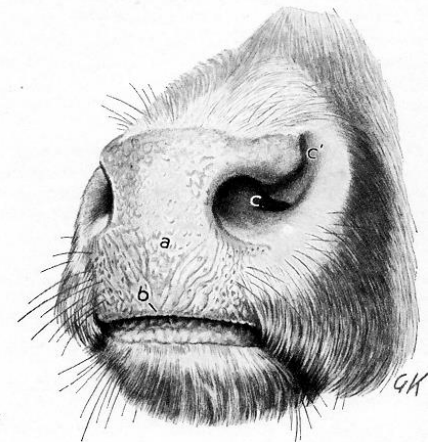


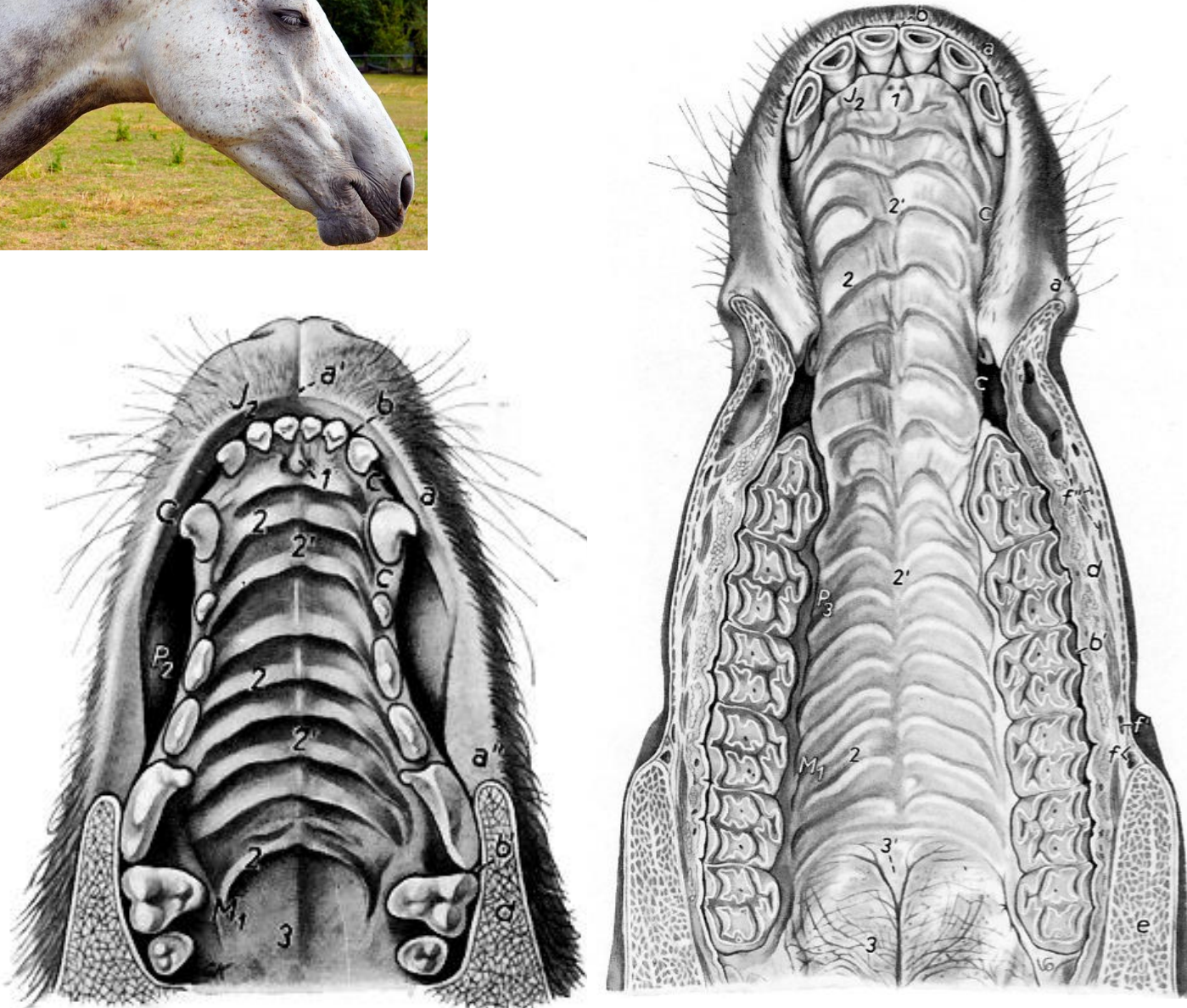
Fig. 274 (Ox)

Figs. 269—274. The muzzles of the domestic mammals. Cranio-lateral aspect.  
*a* Planum nasale (cat, dog, goat, sheep), planum rostrale (pig), planum nasolabiale (ox); *b* Philtrum; *c* Nostril; *c'* Alar groove

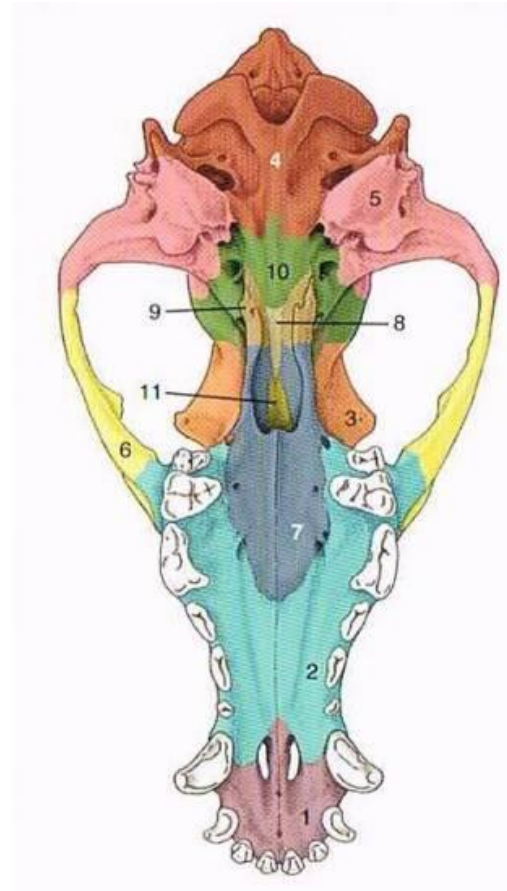
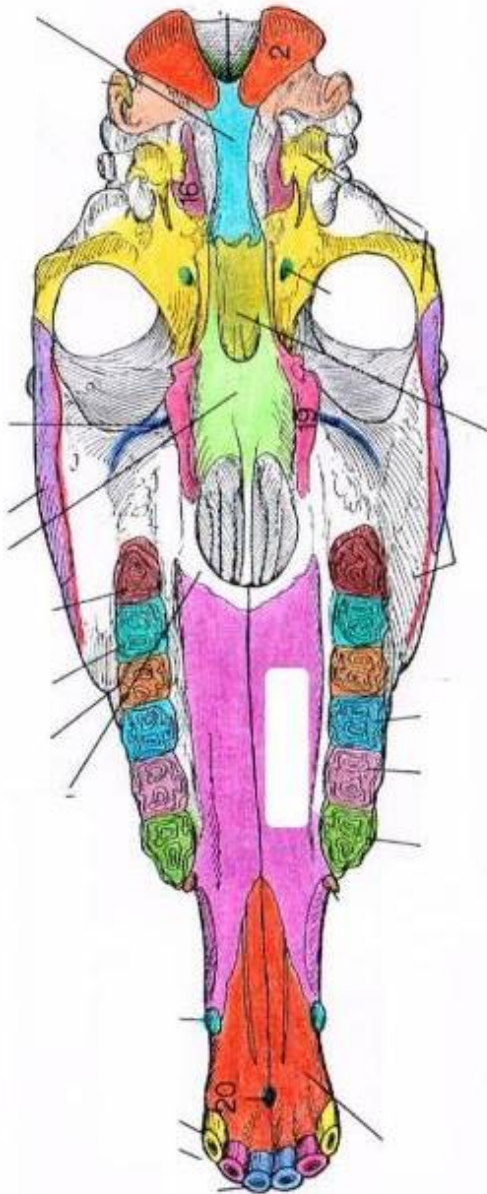
# Bochechas

- Maior nos herbívoros do que nos carnívoros.
- Mucosa, músculos e pele.
- Formam os limites laterais da cavidade oral.
- Mucosa fortemente queratinizada nos ruminantes e apresenta papilas cônicas.

# Bochechas



# Palato duro





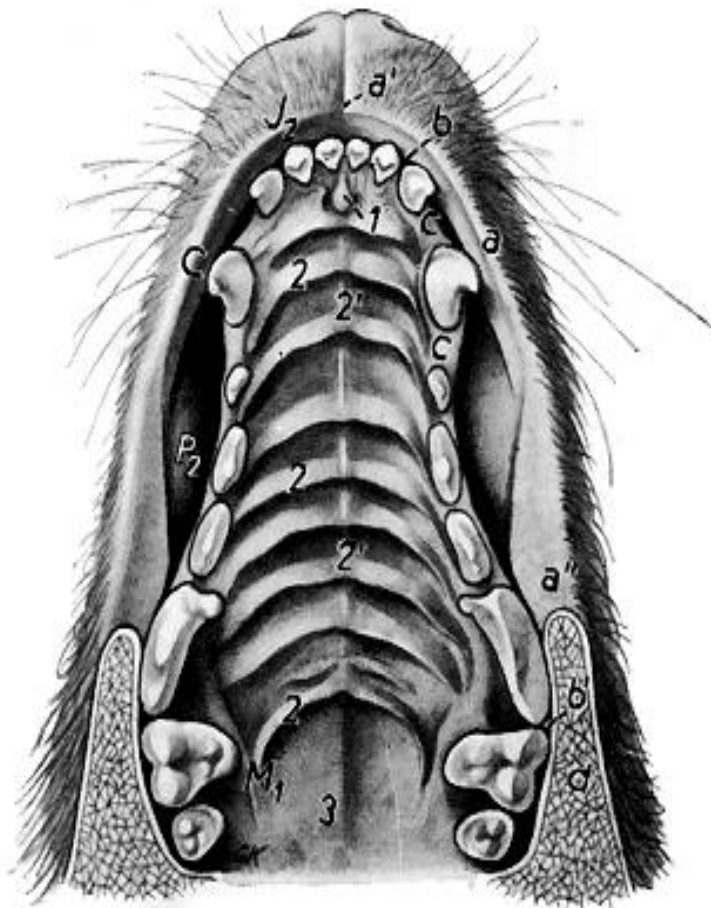
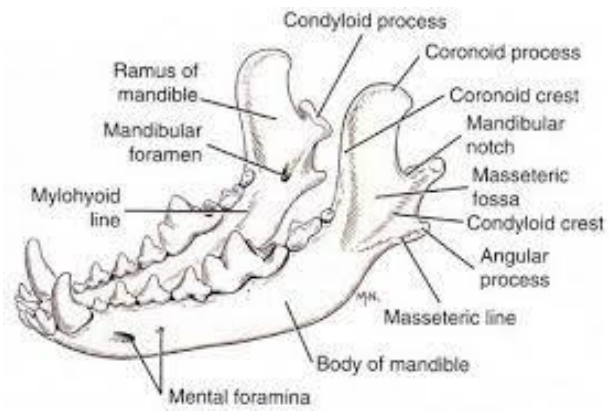
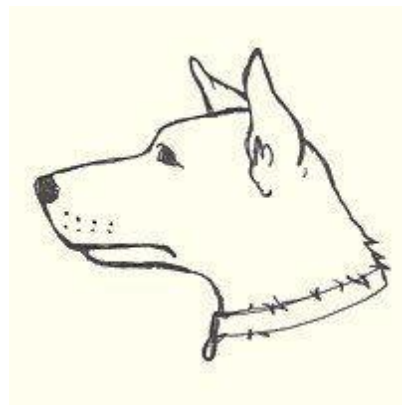
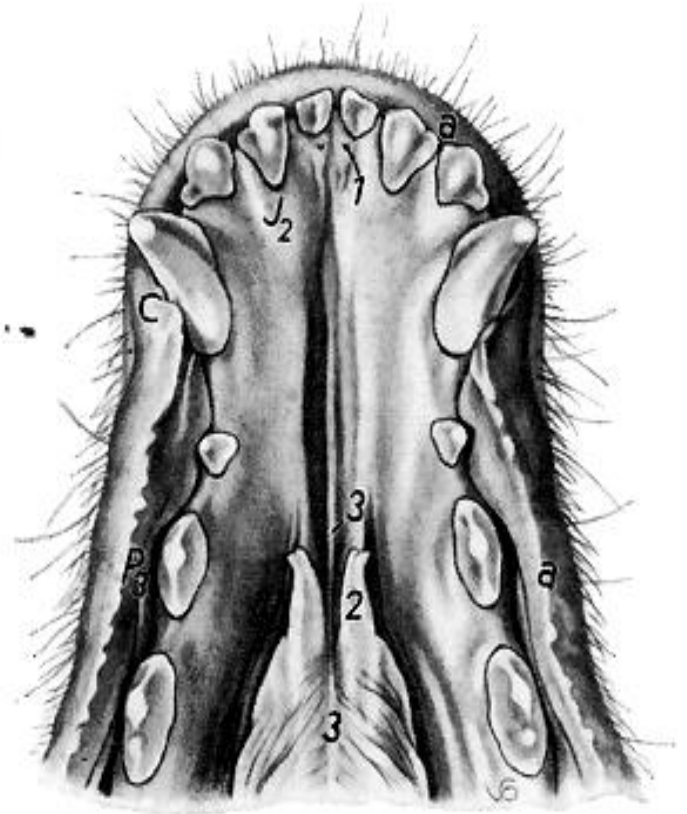


Fig. 26

Fig. 27



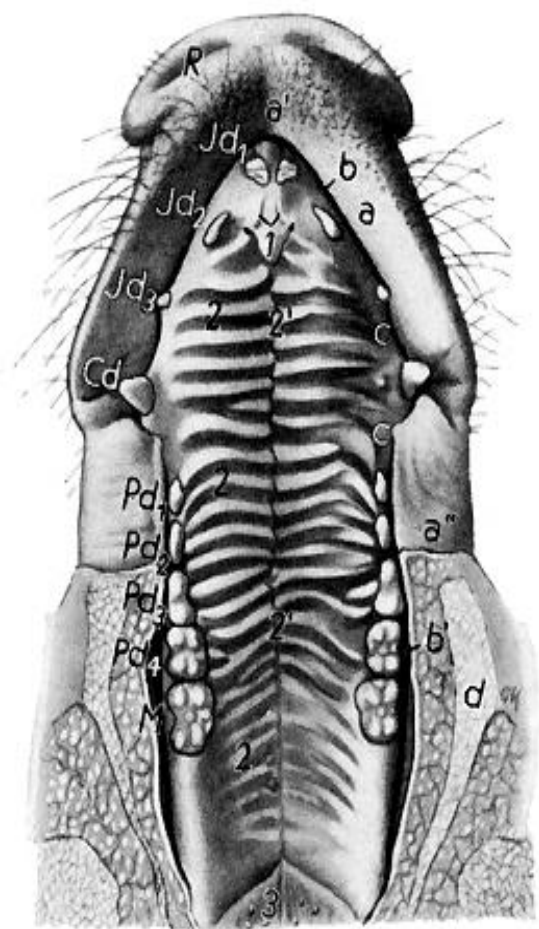


Fig. 29



Fig. 30

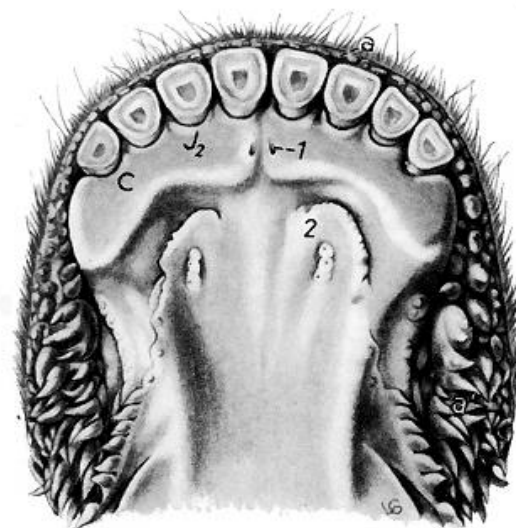
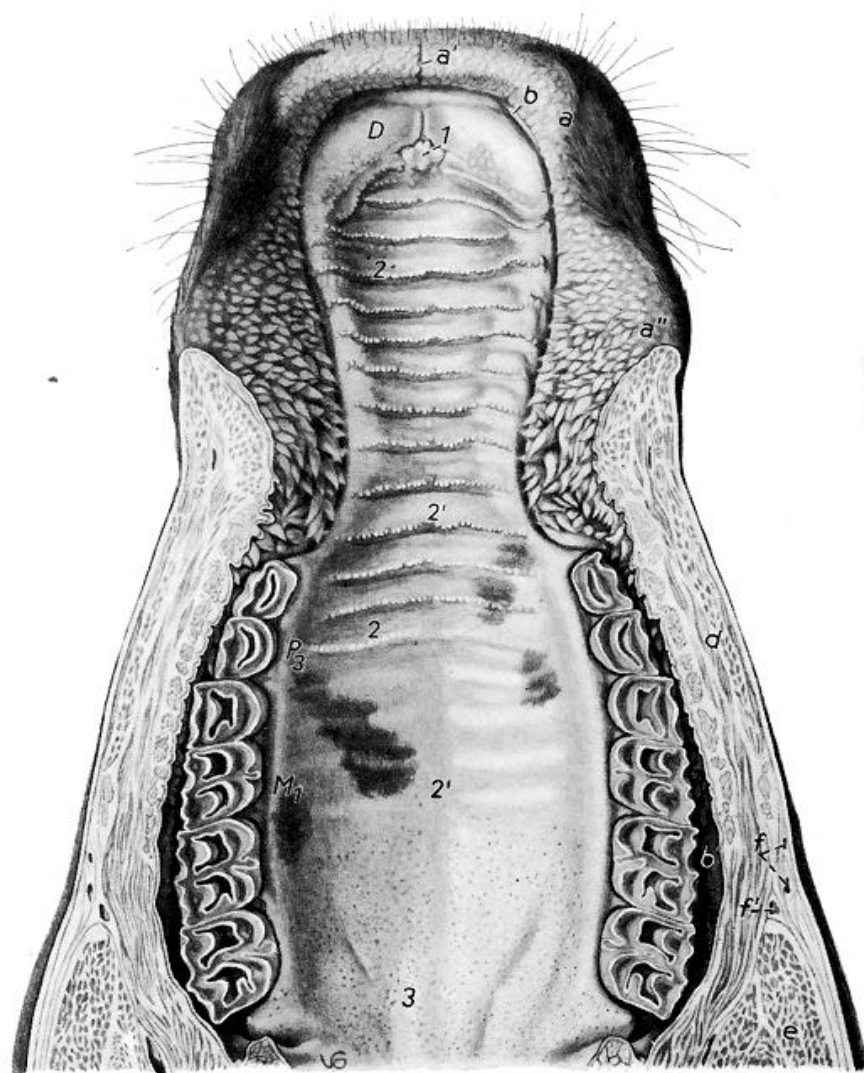


Fig. 32. Sublingual floor of the oral cavity of the cow.  
*J2* Second incisor; *C* Corner incisor (I 4)  
*a* Lower lip; *a'* Labial papillae  
*1* Orobasal organ; *2* Sublingual caruncle with openings of the mandibular and major sublingual ducts



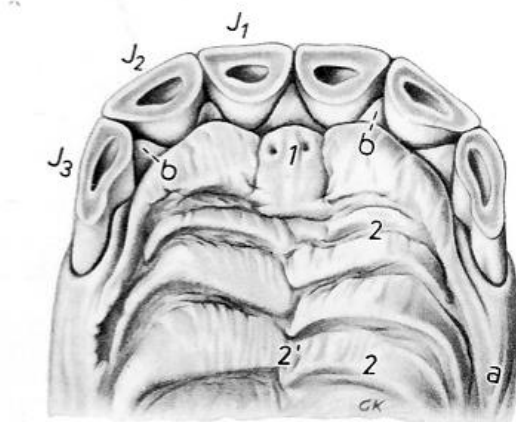
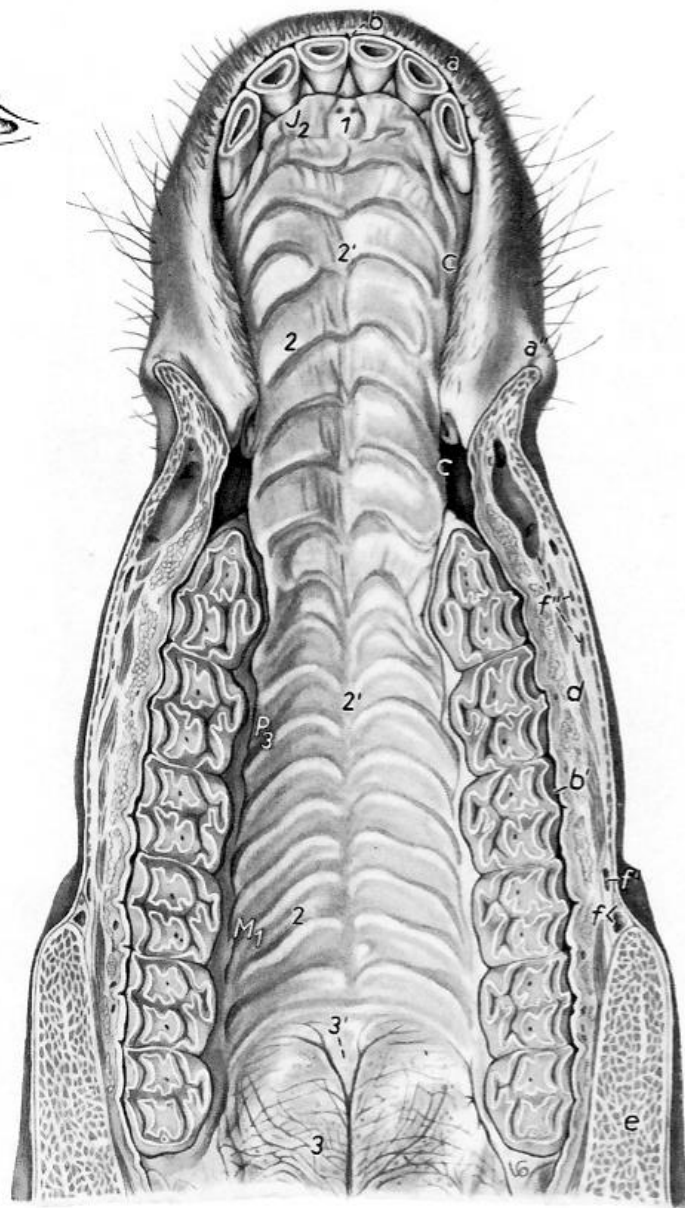
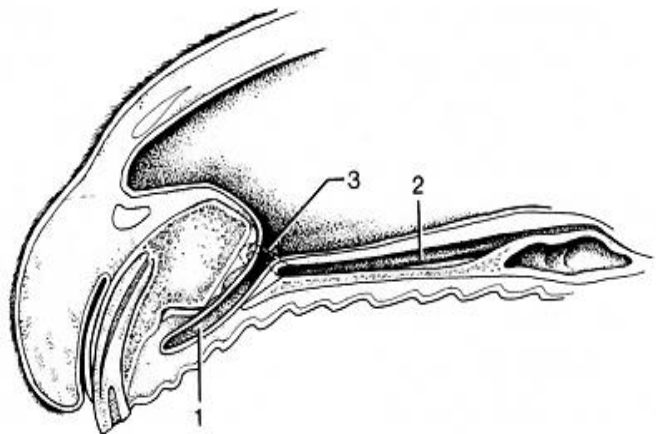


Fig. 33

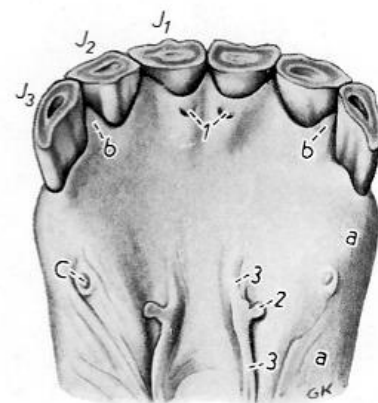


Fig. 34

Fig. 35

# Língua

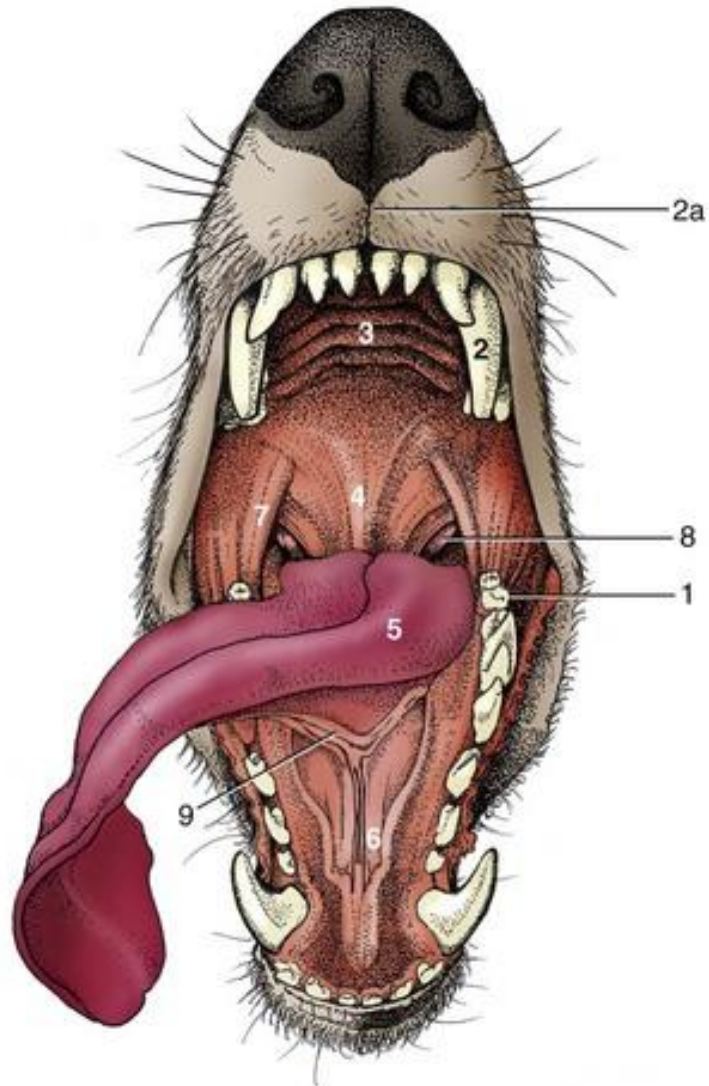




Fig. 36 (Dog)



Fig. 37 (Cat)

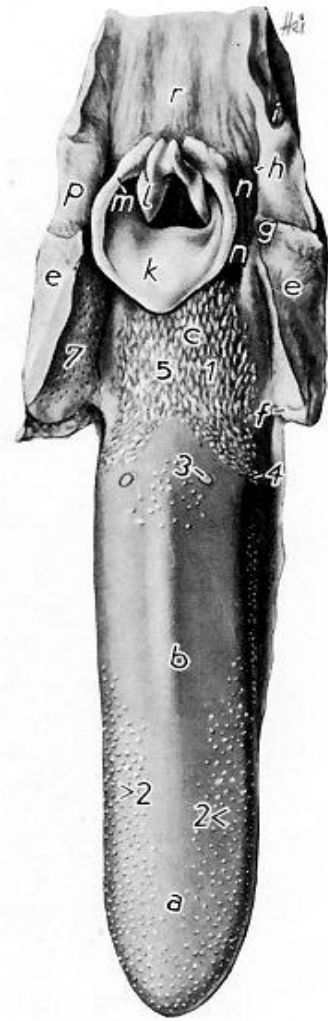
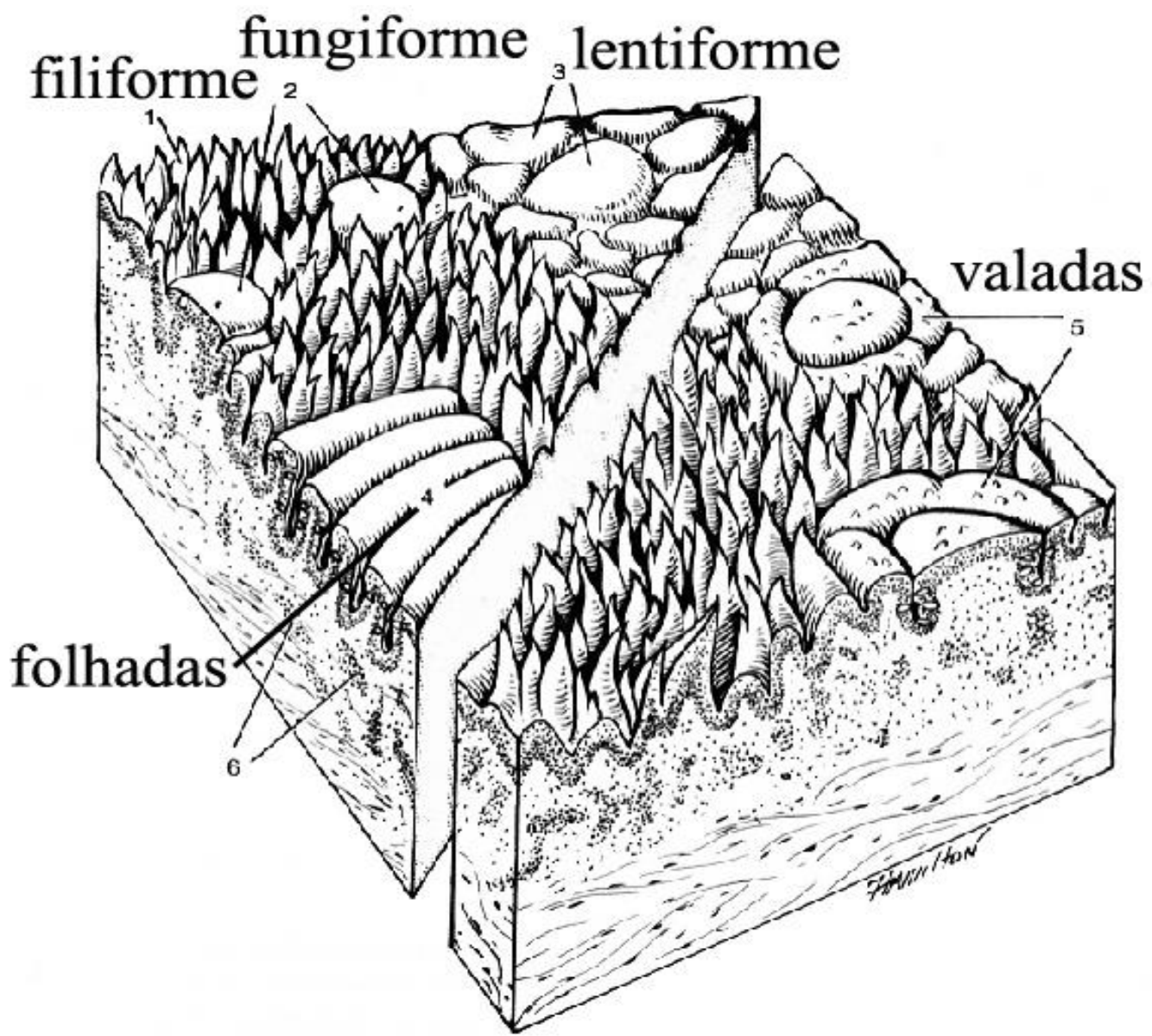
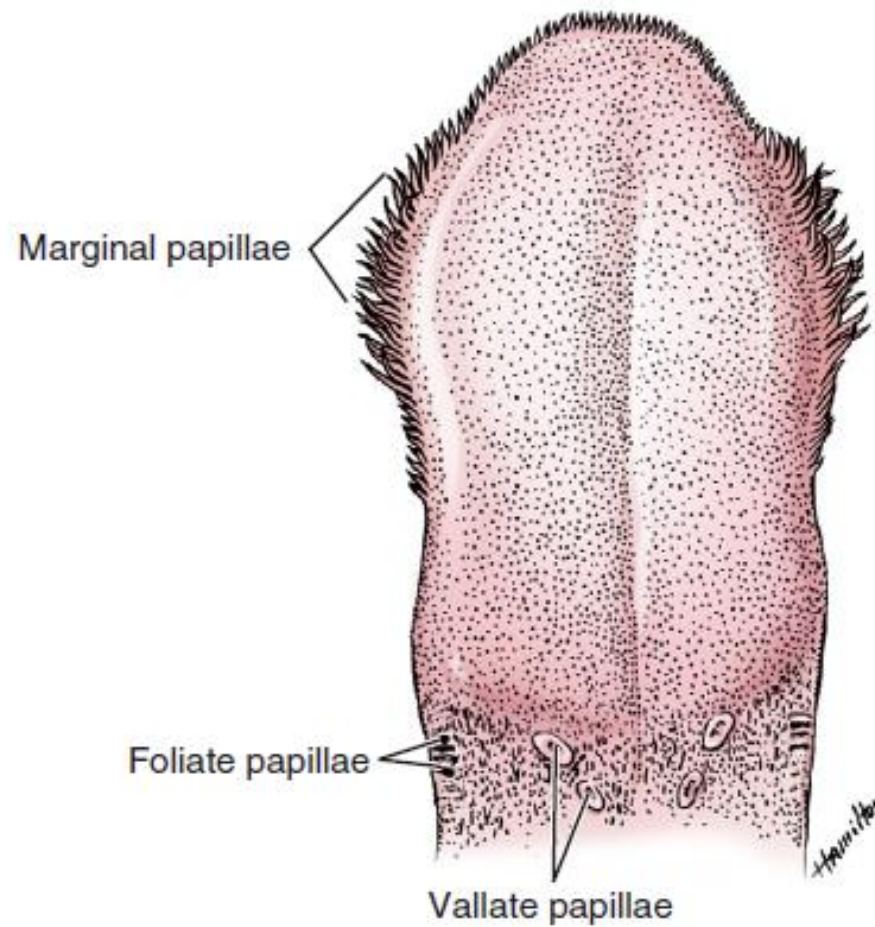


Fig. 38 (Pig)

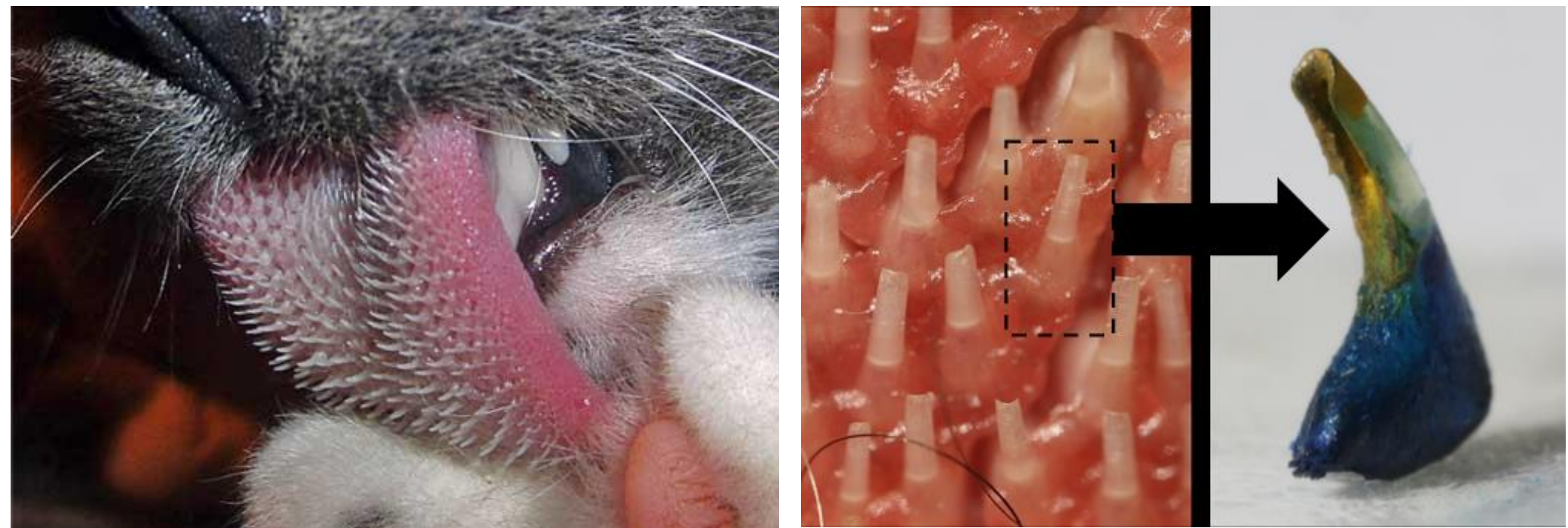




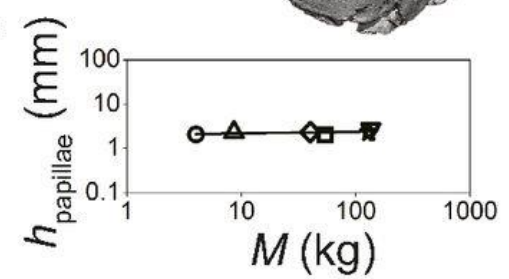
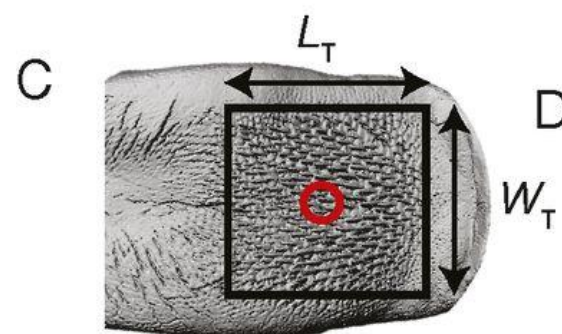
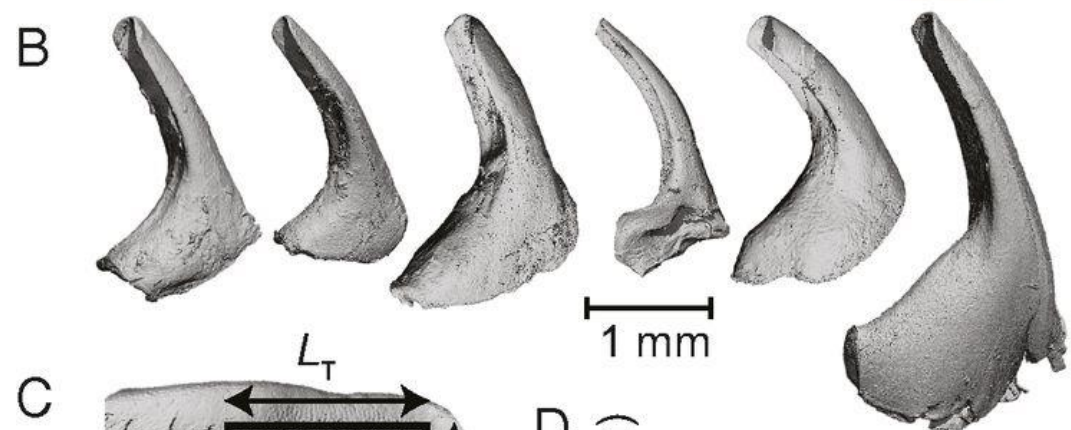


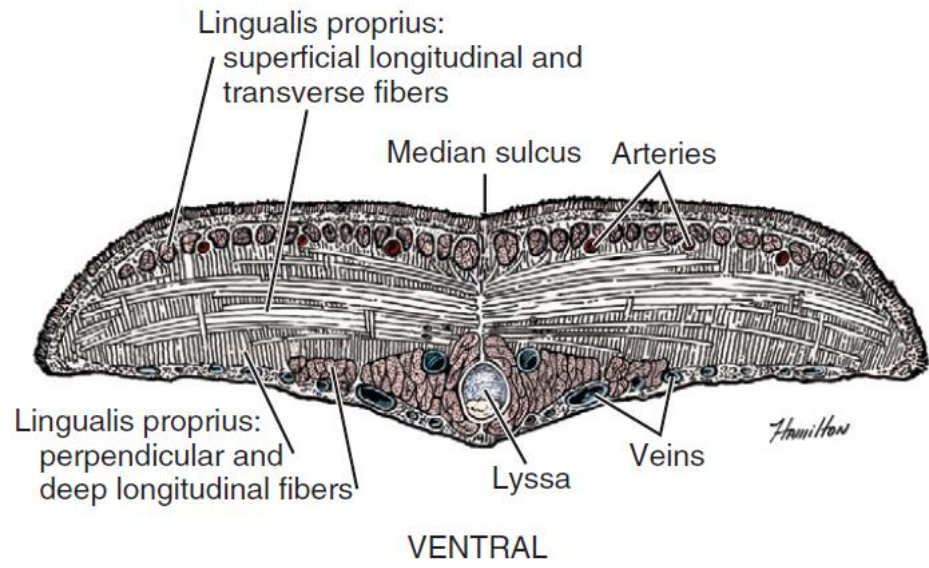


**FIGURE 7-13** Tongue of a puppy, dorsal view.

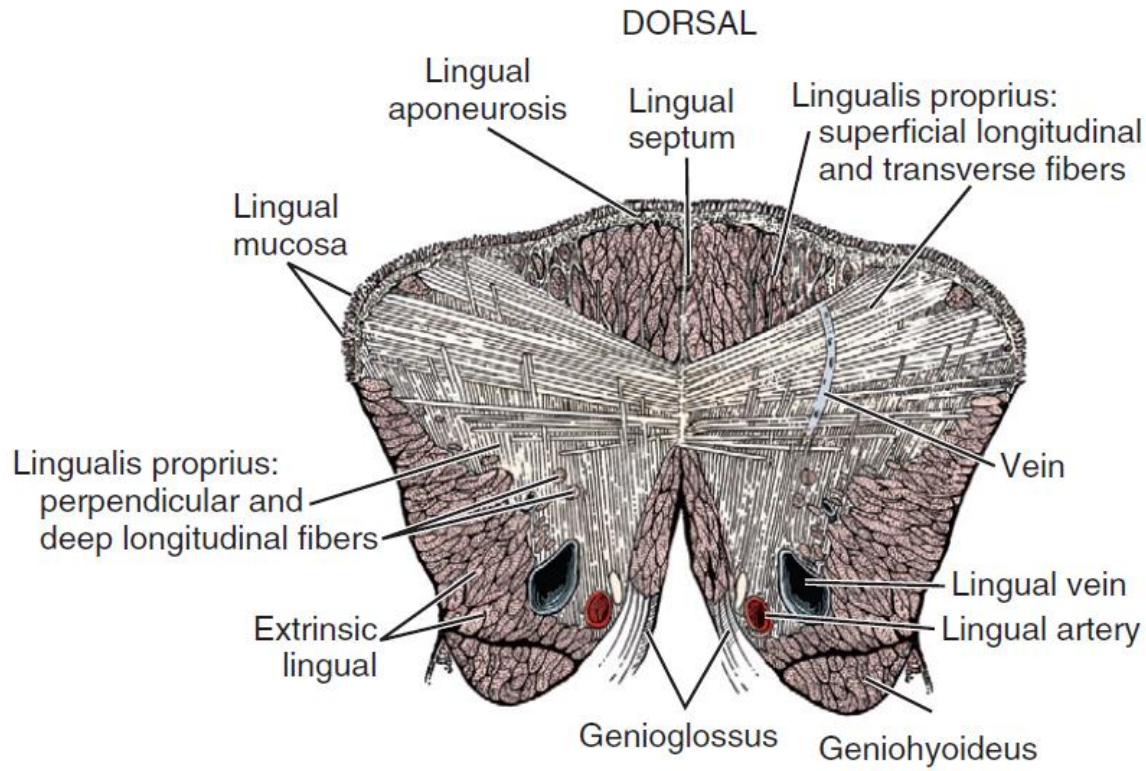


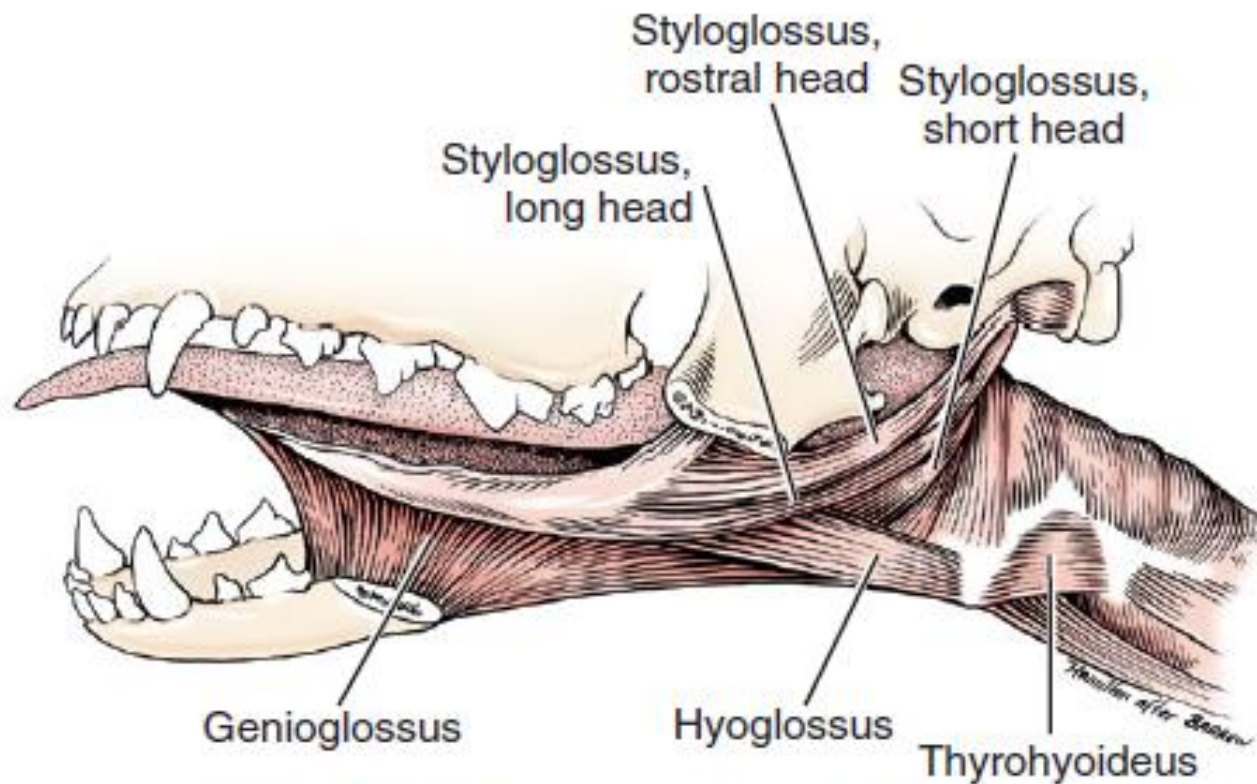
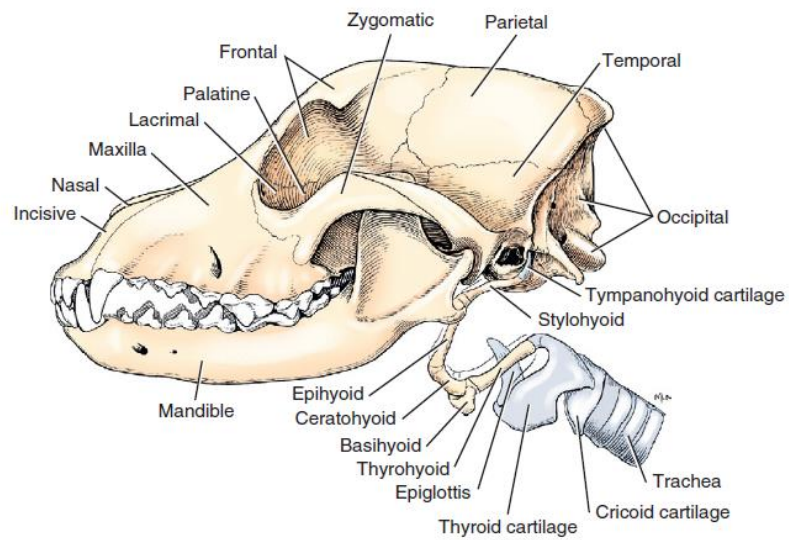
<https://www.pnas.org/doi/10.1073/pnas.1809544115>





**FIGURE 7-19** Transverse section near apex of tongue.



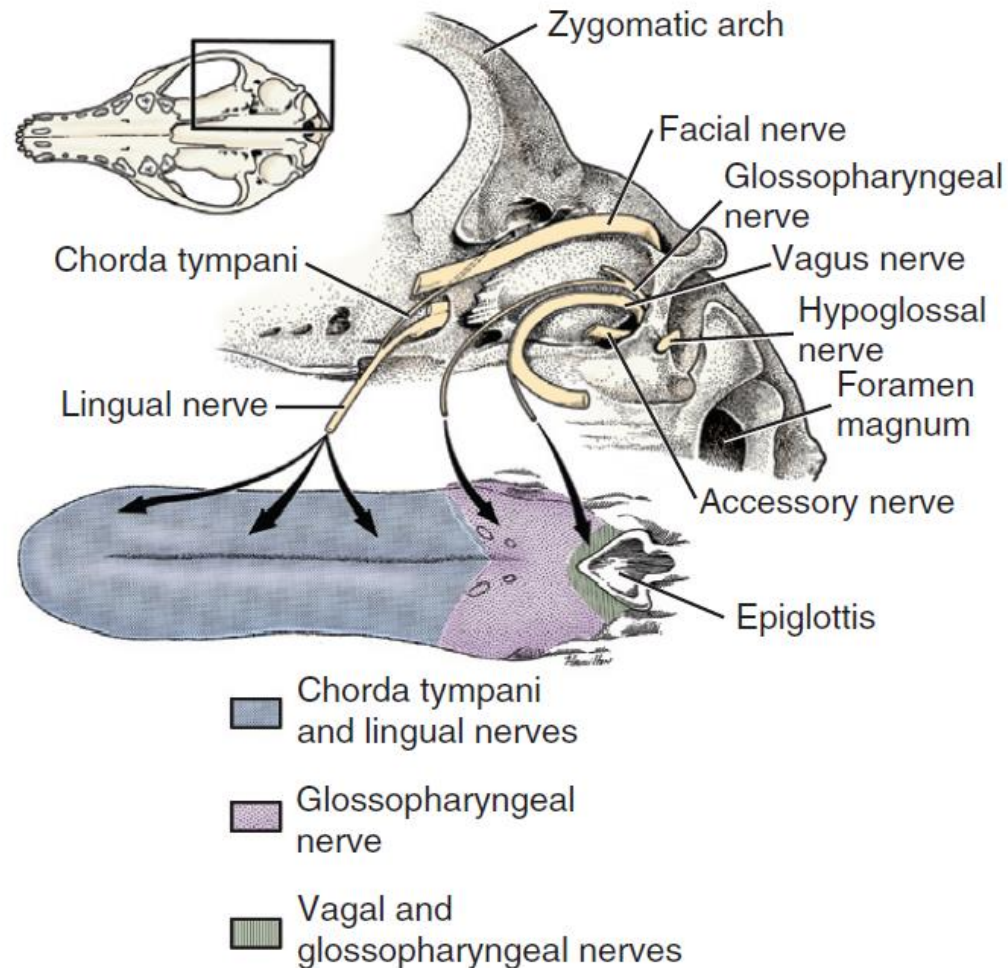


**FIGURE 7-15** Muscles of the tongue, lateral aspect.



A **inervação** da língua é complexa e envolve cinco nervos cranianos:

- Ramo lingual do nervo mandibular (um ramo do nervo trigêmeo);
- Corda do tímpano do nervo intermediofacial;
- Nervo glossofaríngeo;
- Nervo vago;
- Nervo hipoglosso.



**FIGURE 7-21** Innervation of the tongue.