

Articulações da coluna vertebral e tórax

Sínfise intervertebral

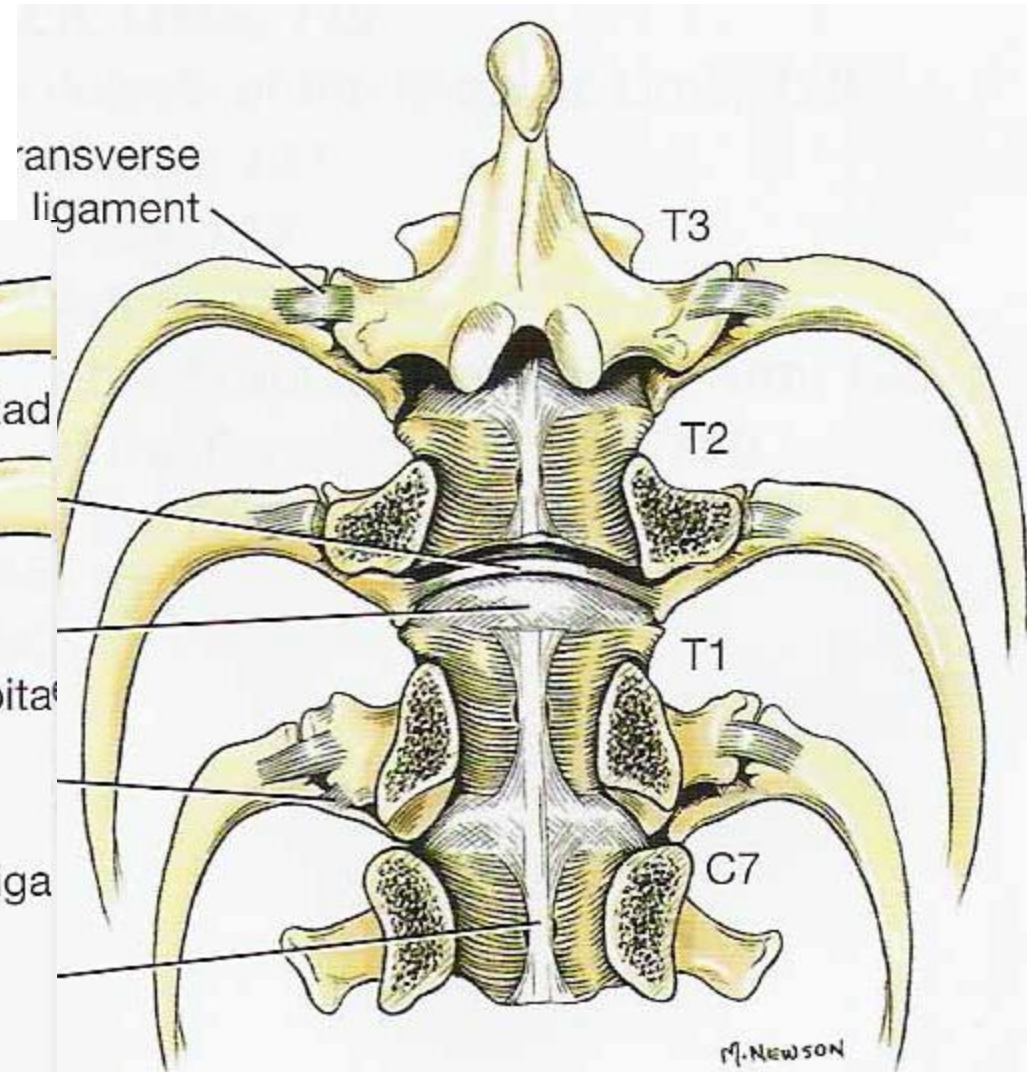
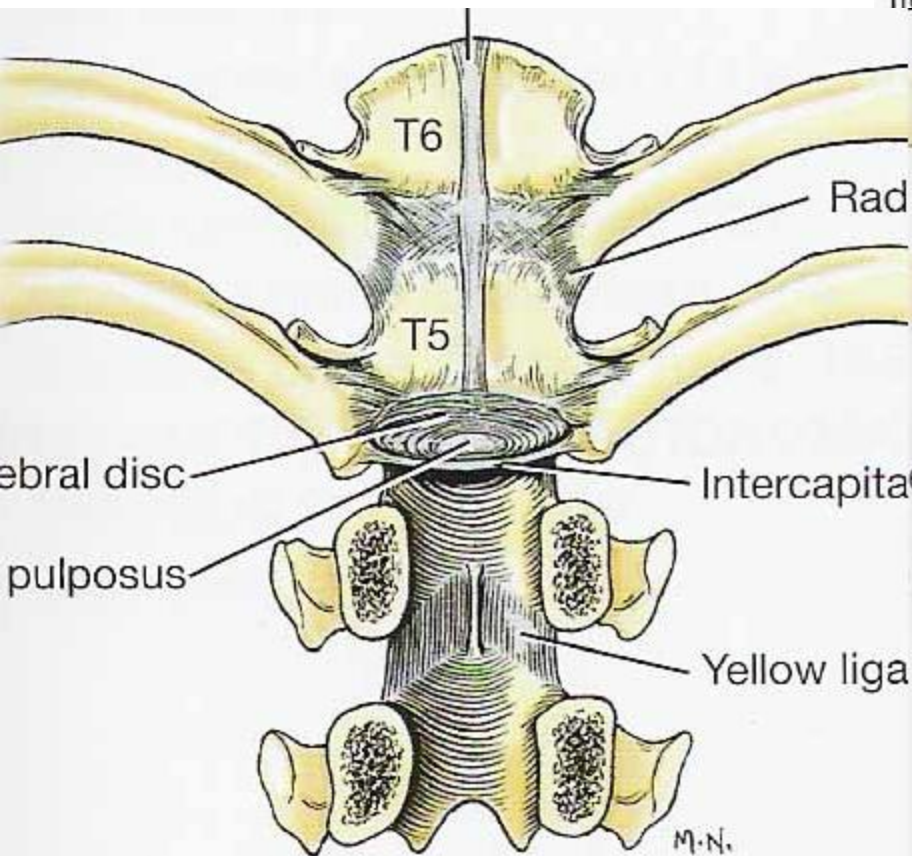
Disco intervertebral

Anulo fibroso

Núcleo pulposos

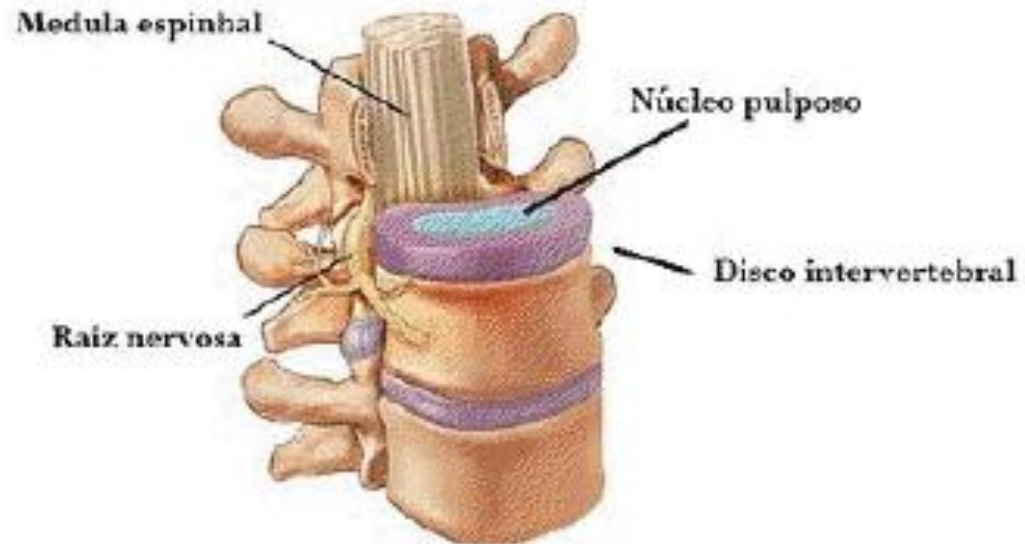
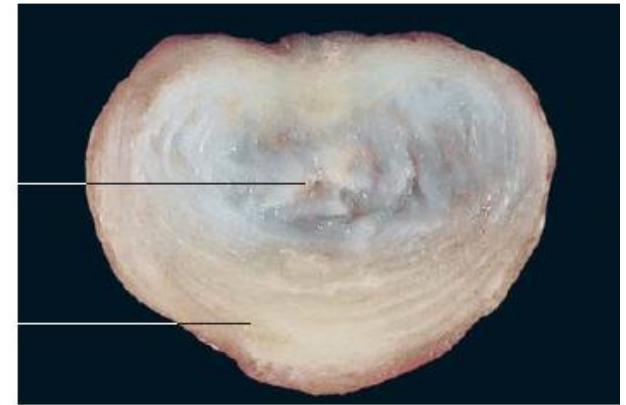
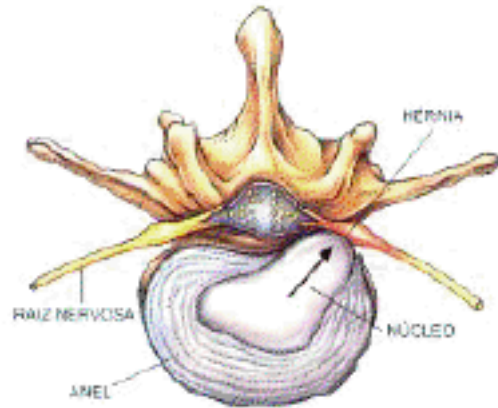
Ligamento longitudinal dorsal

Ligamento longitudinal ventral



Articulações da coluna vertebral e tórax

Hérnia de disco



Articulações entre os processos articulares

Ligamento flavo

Ligamento intertransversal

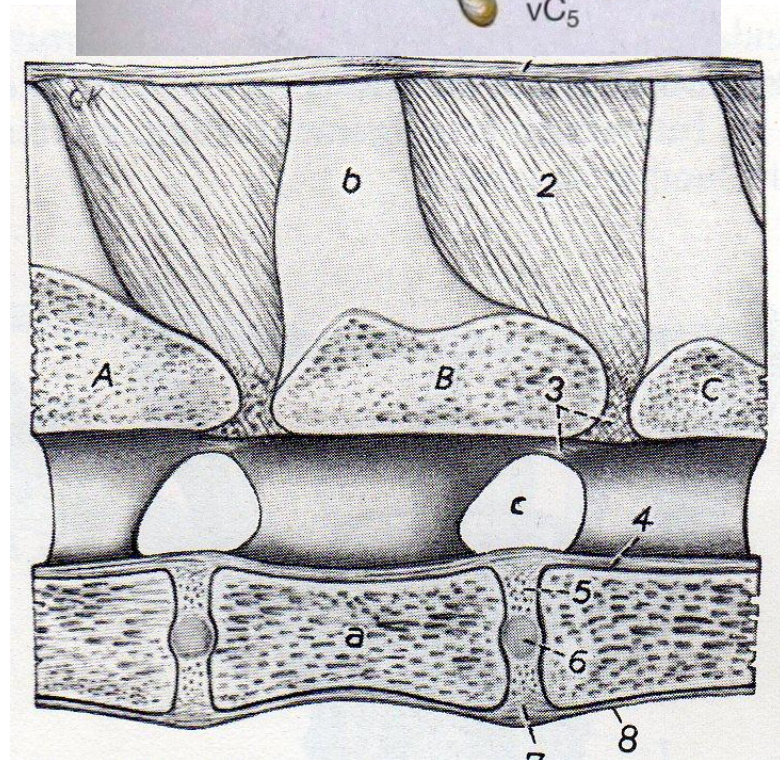
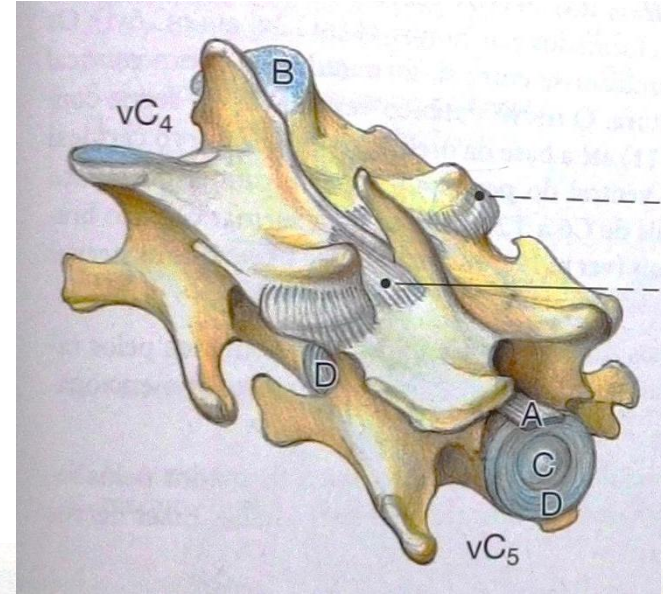
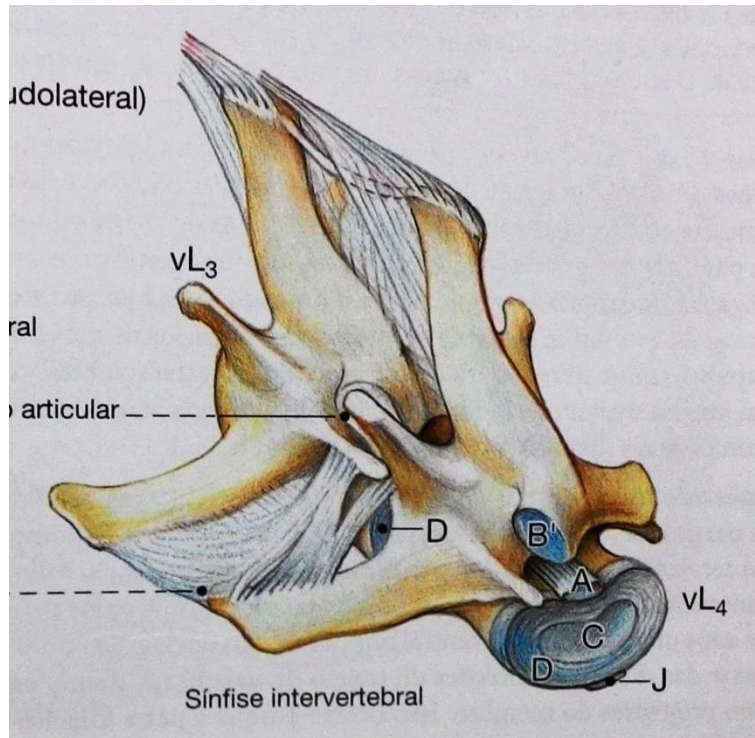
Ligamento interespinhal

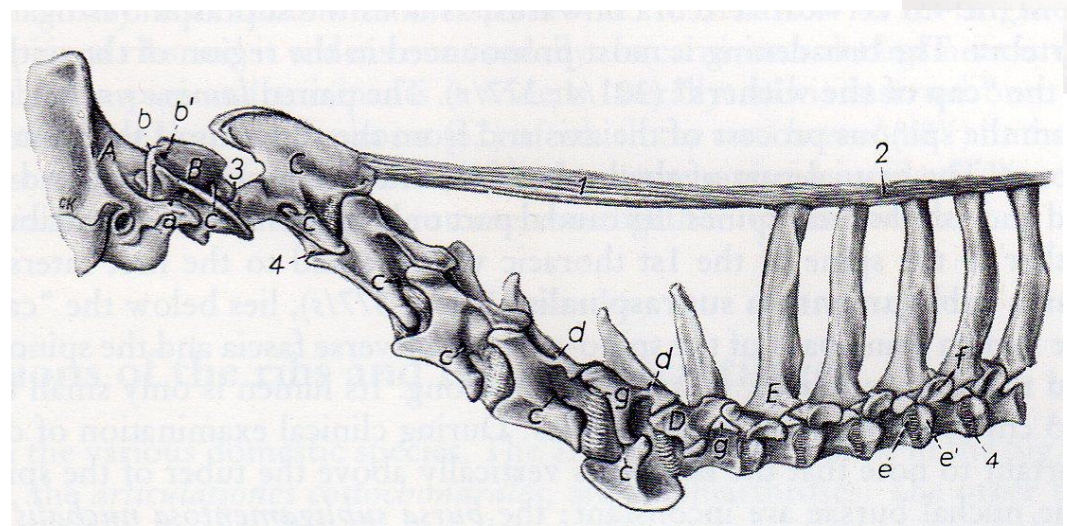
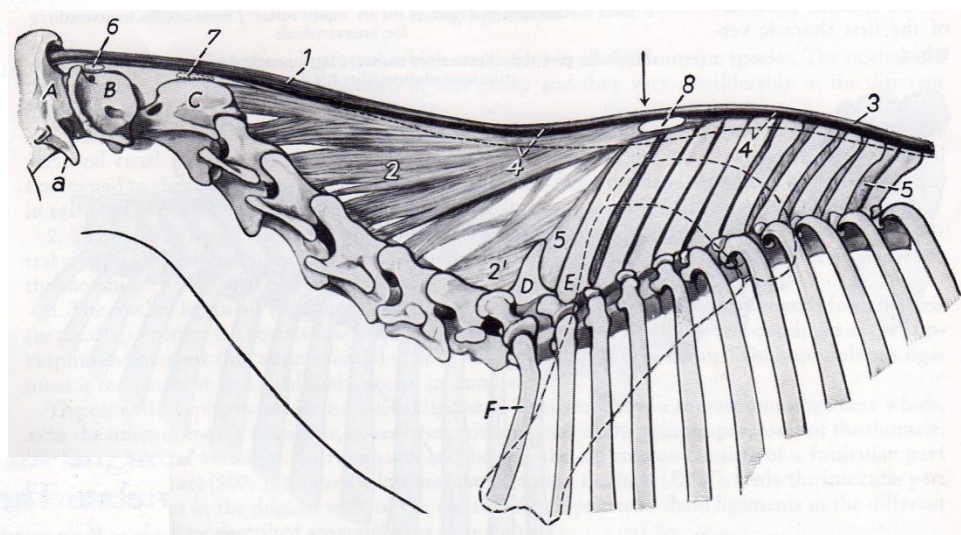
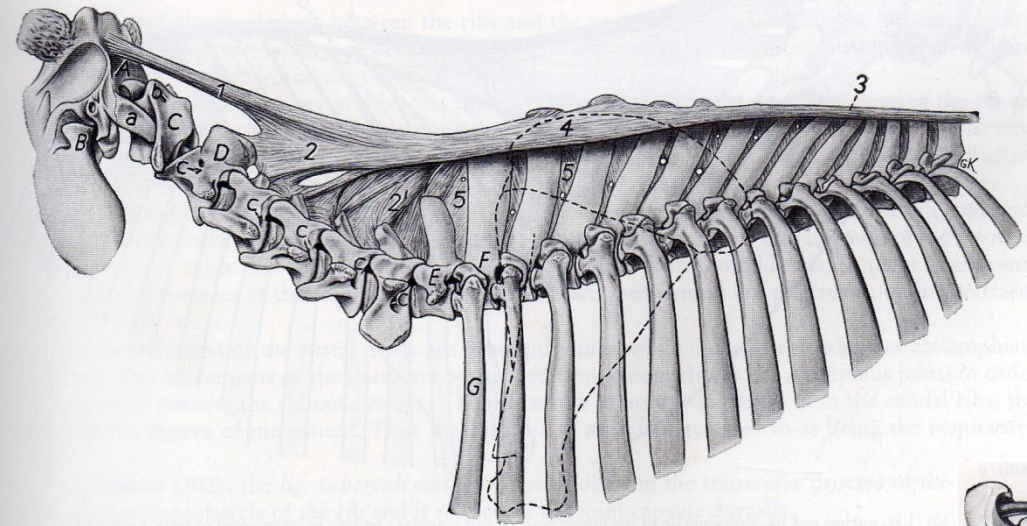
Ligamento supra-espinhal

Ligamento nocal

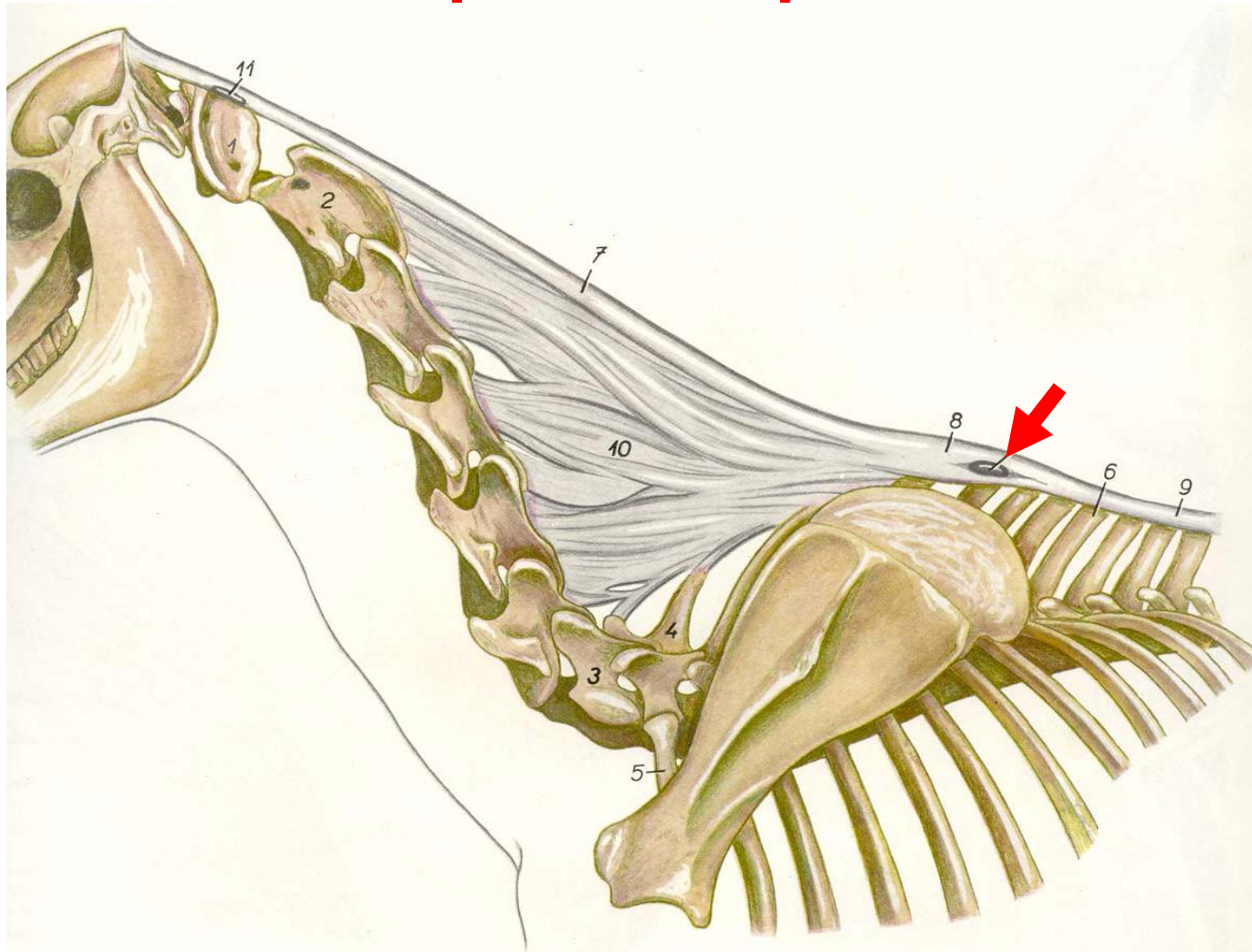
Funículo da nuca

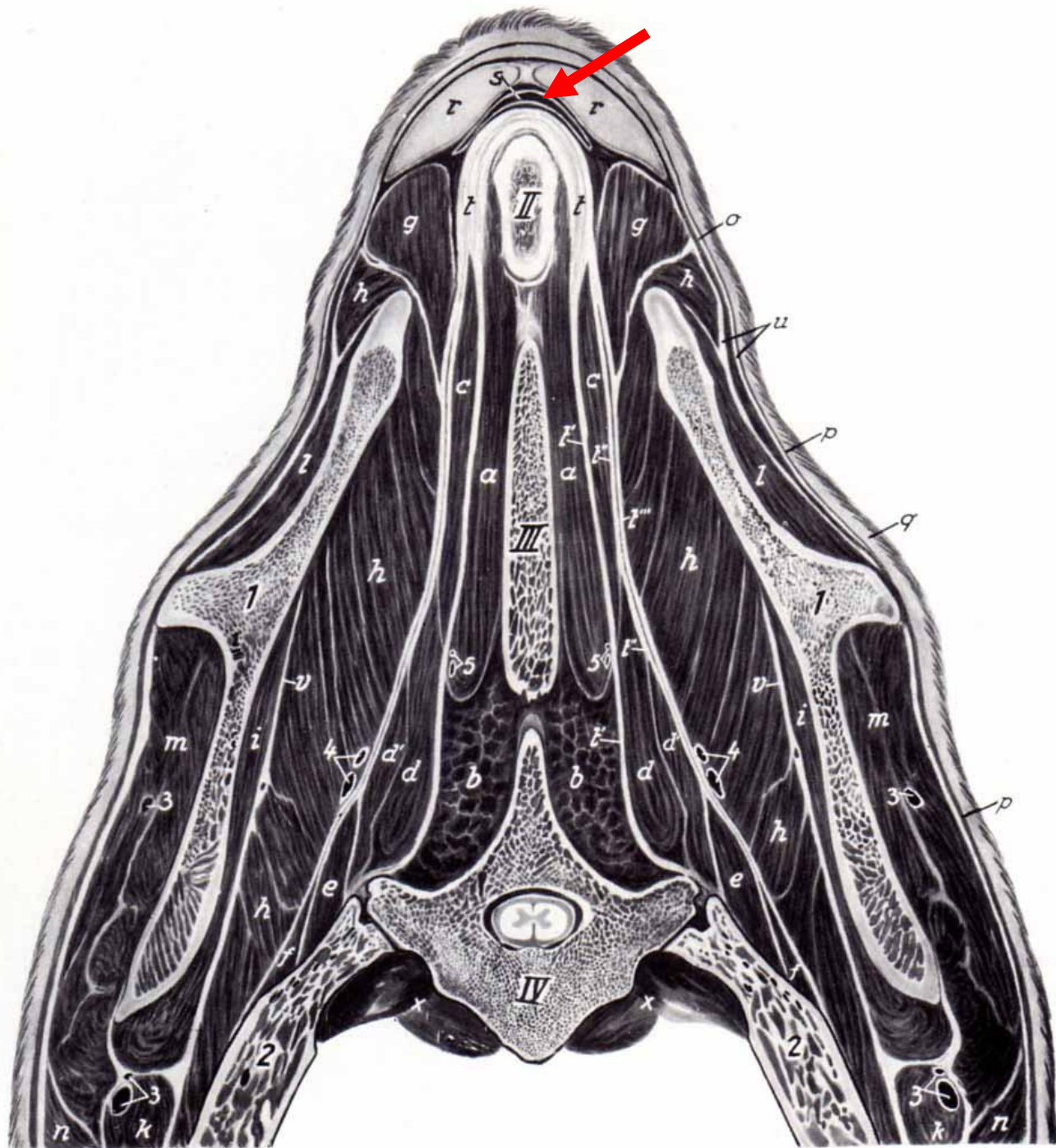
Lâmina da nuca (só ruminantes e cavalo)





Bolsa sinovial subligamentosa supra-espinal





Mal da cernelha (bursite)



Articulação atlanto-occipital

Ligamentos laterais

Articulação atlanto-axial

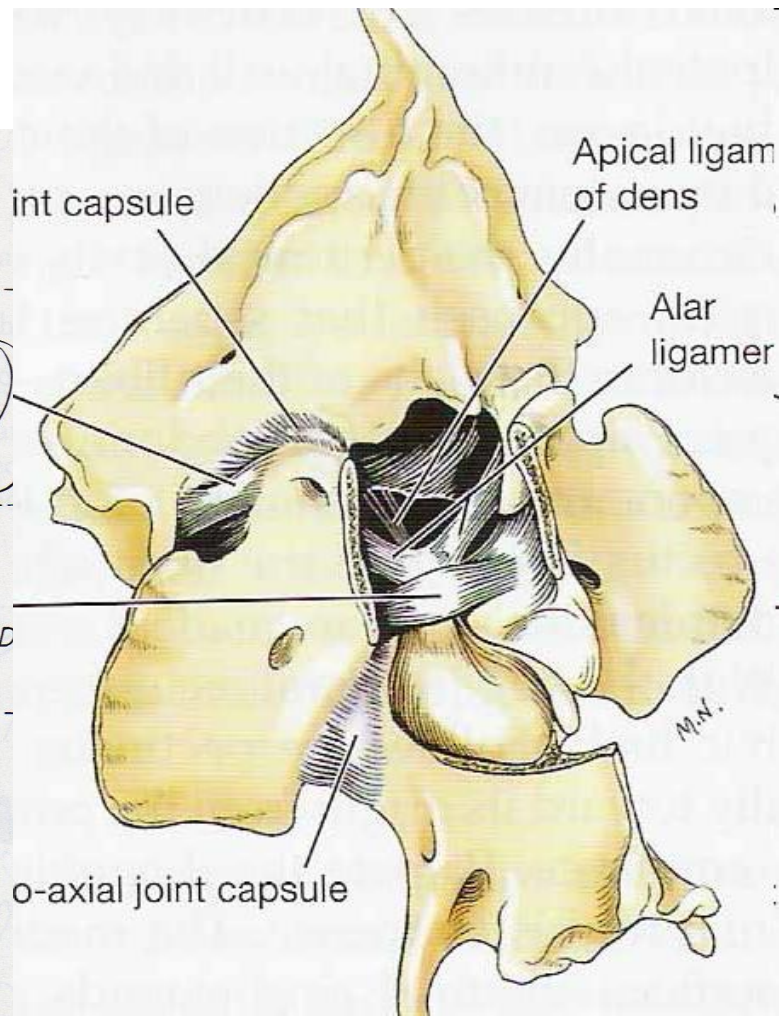
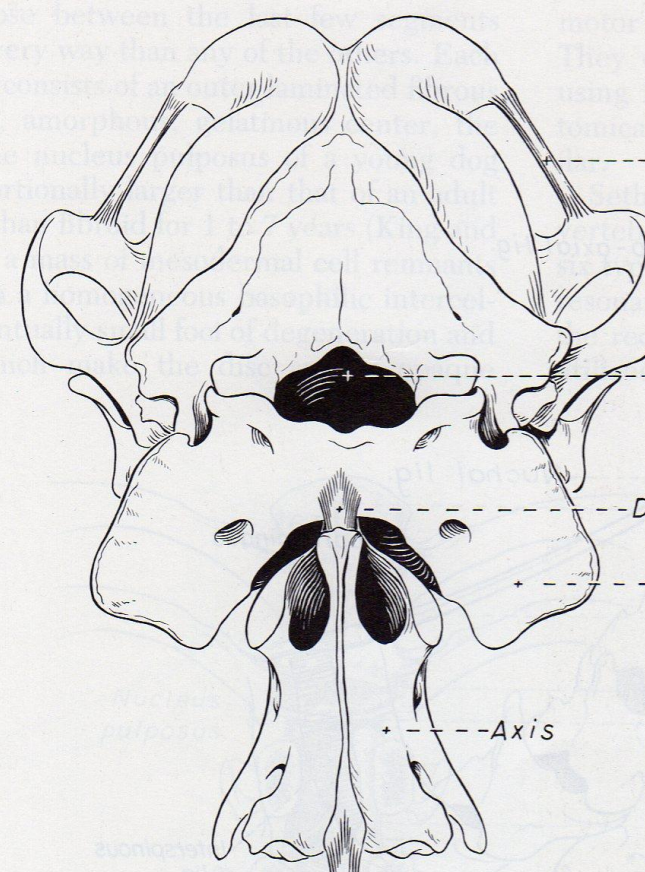
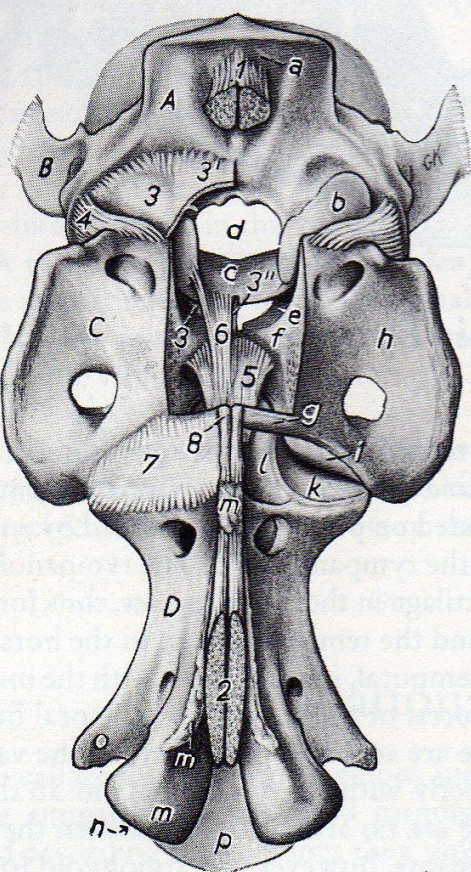
Ligamento transverso do atlas (só carnívoro)

Ligamento longitudinal do dente (exceto em carnívoro)

Ligamento do ápice do dente (só carnívoro e ruminante)

Ligamento alar (só carnívoro)

Ligamento atlanto-axial ventral



Articulações costovertebral

Articulação da cabeça da costela

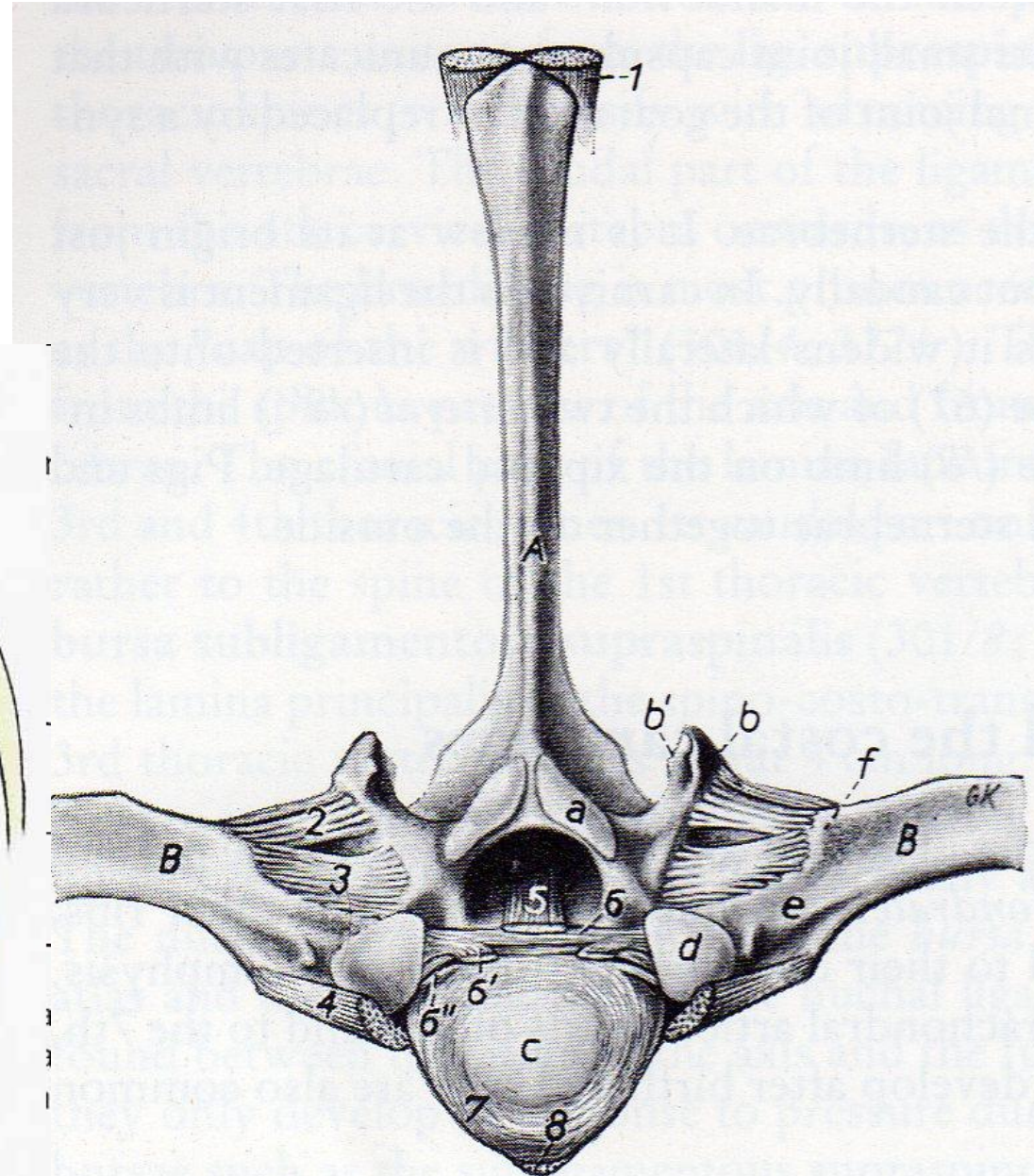
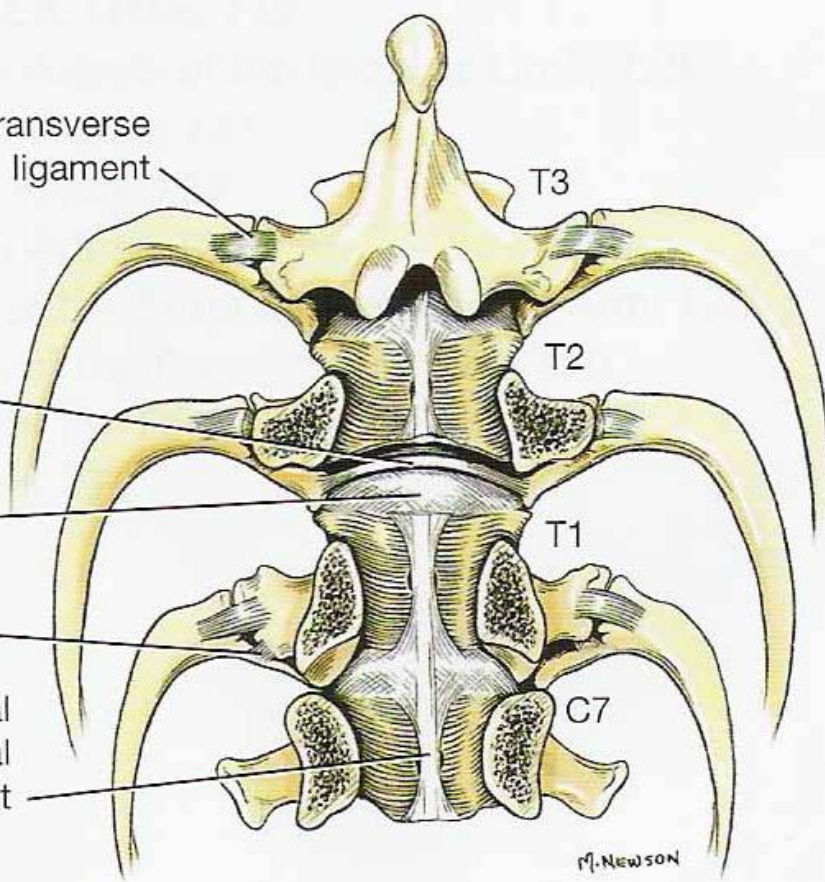
Ligamento radiado

Ligamento intra-articular

Ligamento intercapital

Articulação costotransversal

Ligamento costotransversal



Articulações costovertebral

Articulação da cabeça da costela

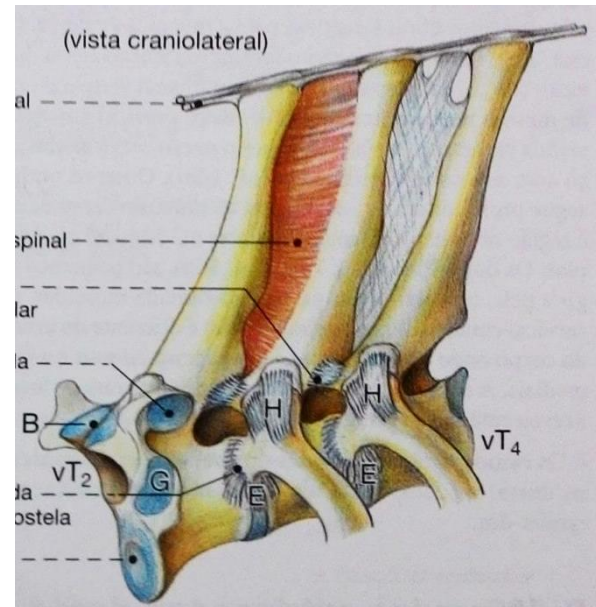
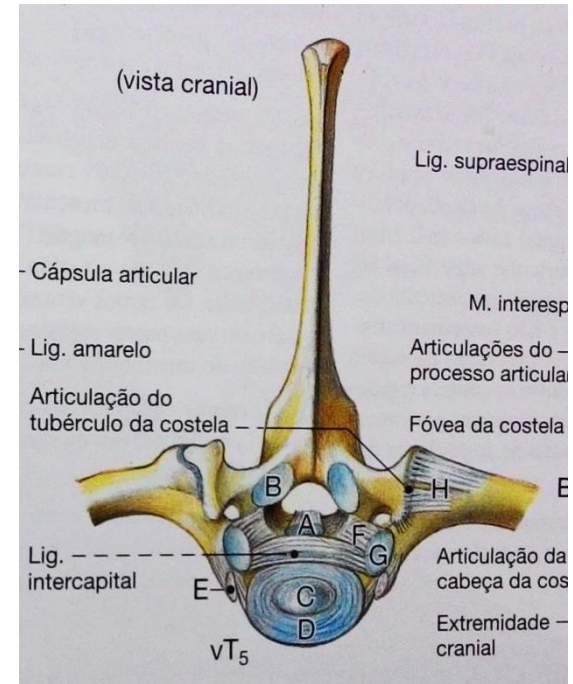
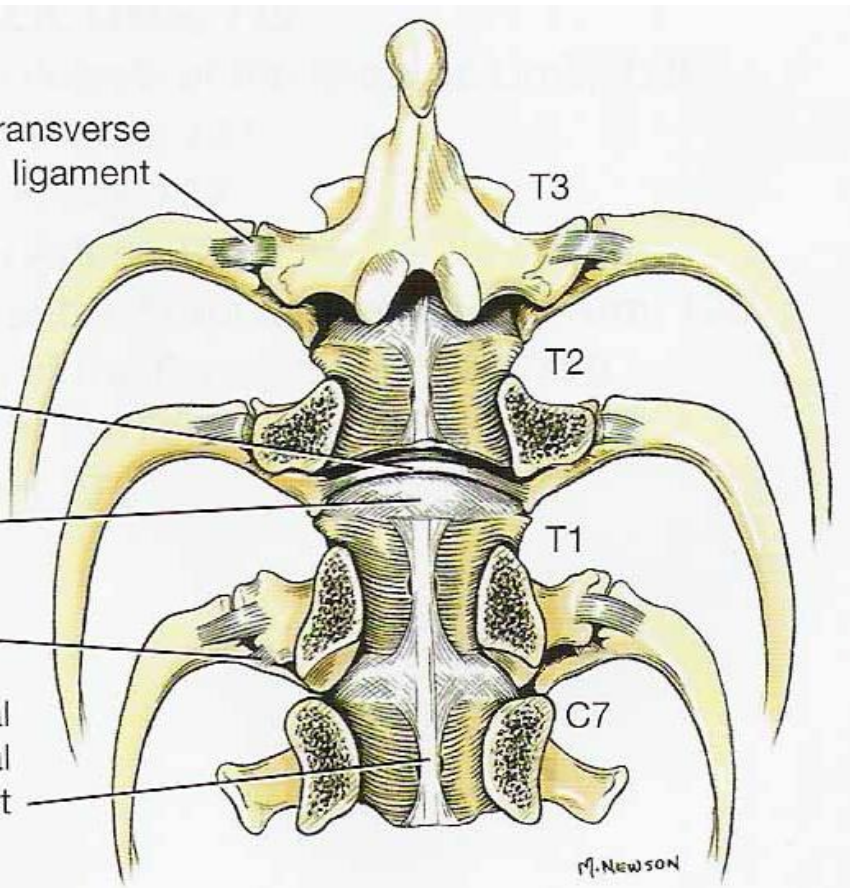
Ligamento radiado

Ligamento intra-articular

Ligamento intercápital

Articulação costotransversal

Ligamento costotransversal



Articulações costocondrais (fibrosas)
Articulações estenrocostais (sinovial)
Sincondroses esternais

