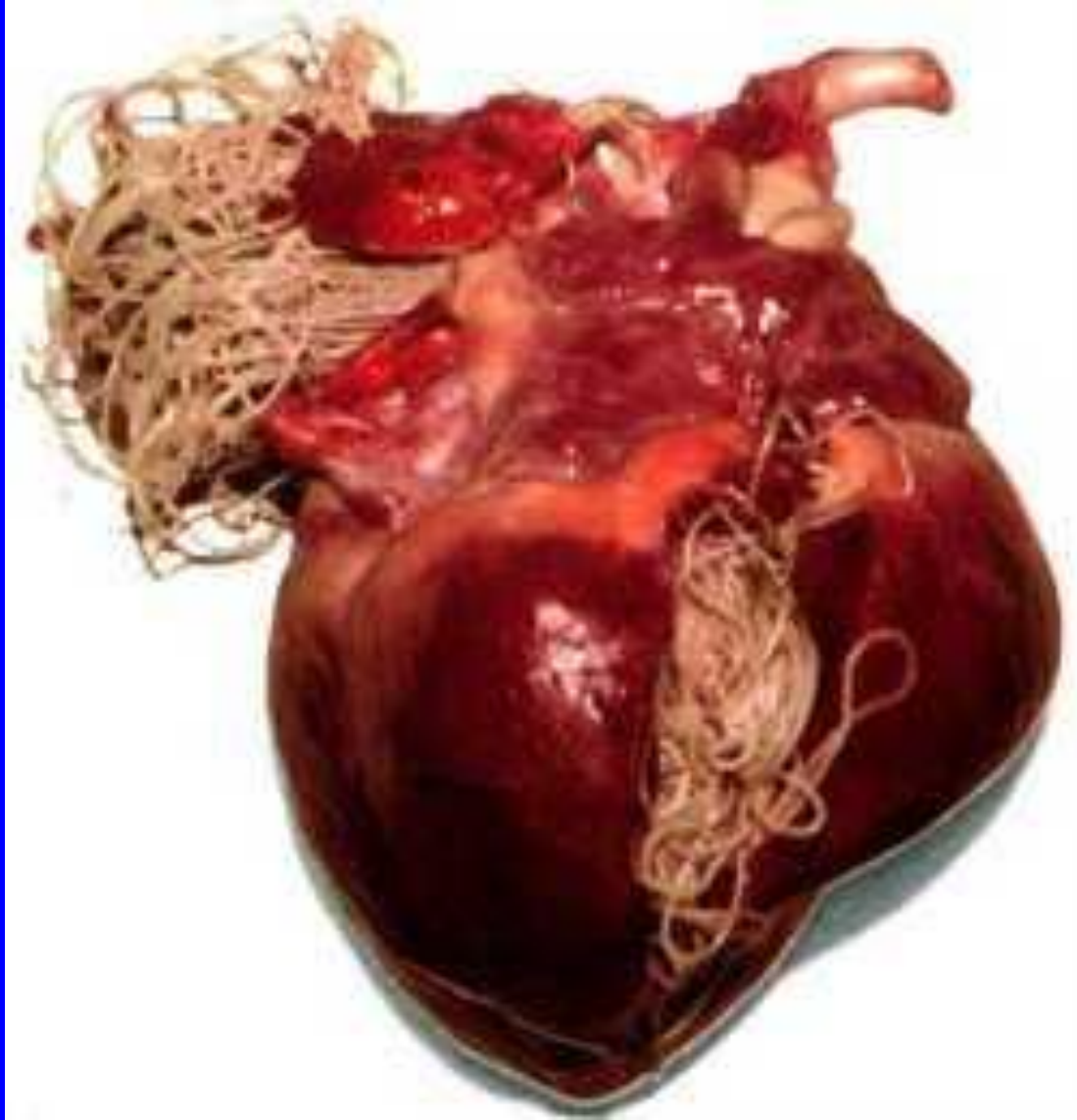


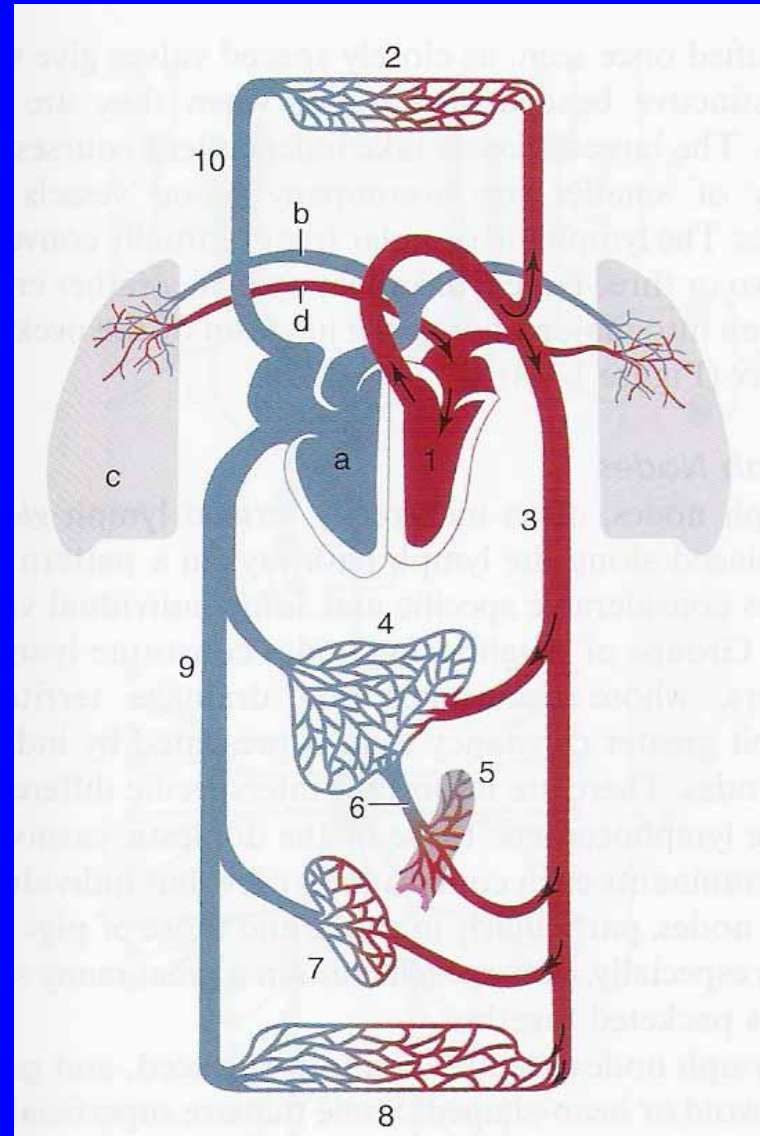
Generalidades sobre sistema circulatório



Generalidades sobre sistema circulatório

Grande circulação
ou sistêmica

Pequena circulação
ou pulmonar



Generalidades sobre sistema circulatório

Tipos de vasos

- Artérias**
- Veias**
- Capilares**
- Linfáticos**

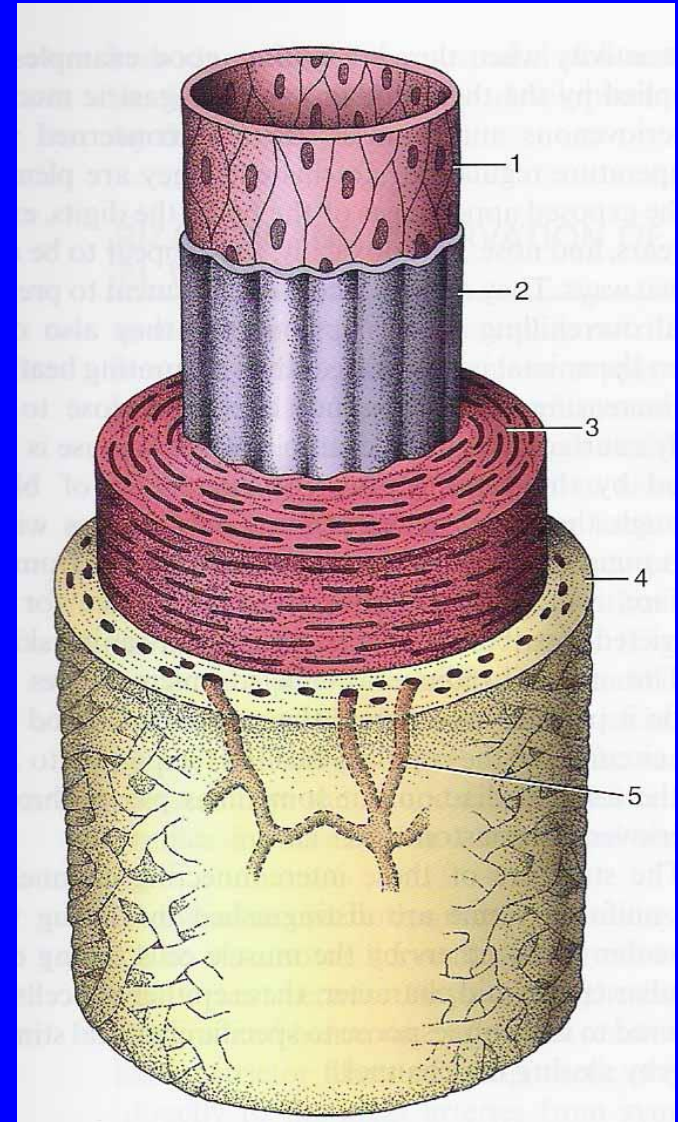
Generalidades sobre sistema circulatório

Estrutura

Túnica interna – Endotélio

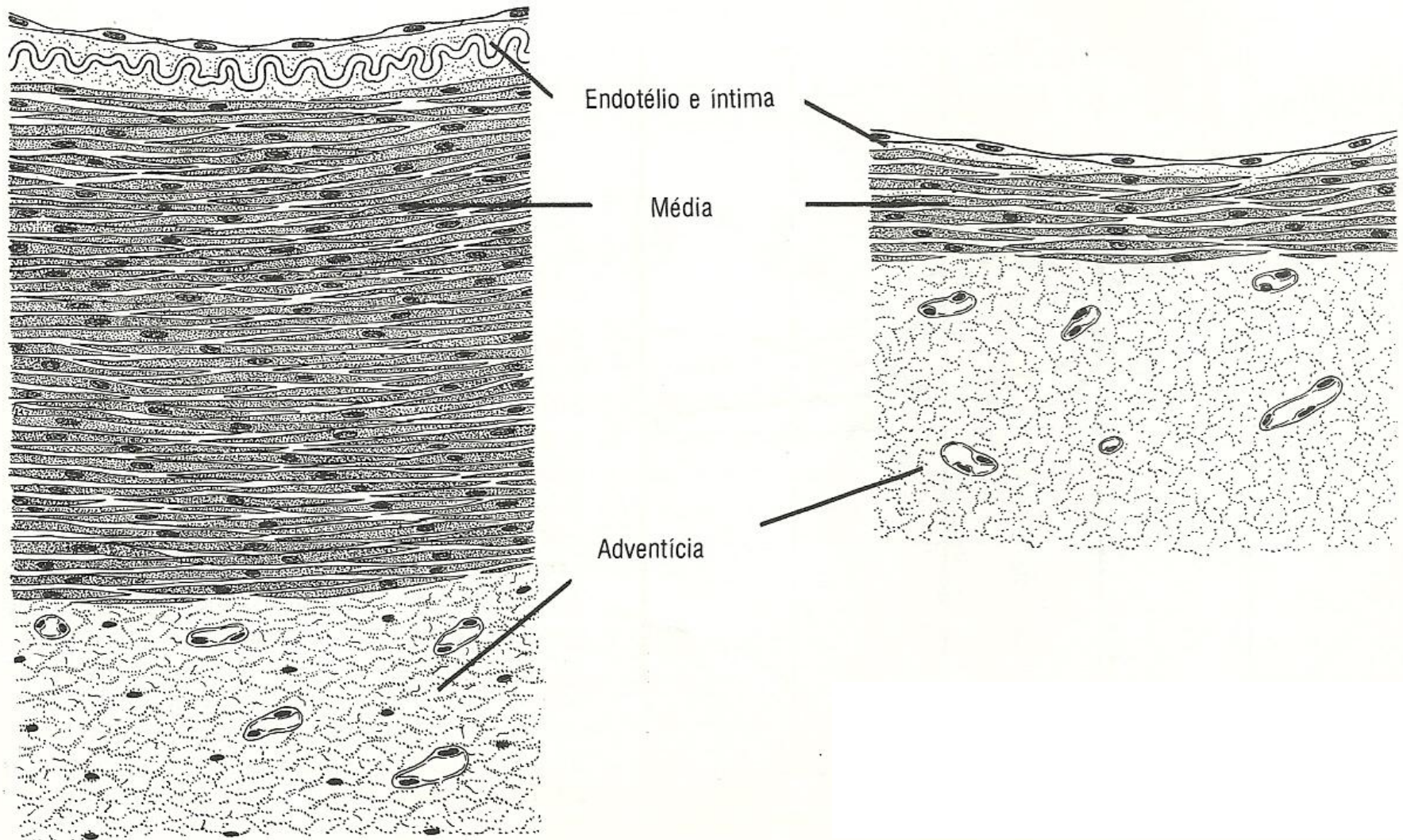
Túnica média – Muscular e fibras elásticas

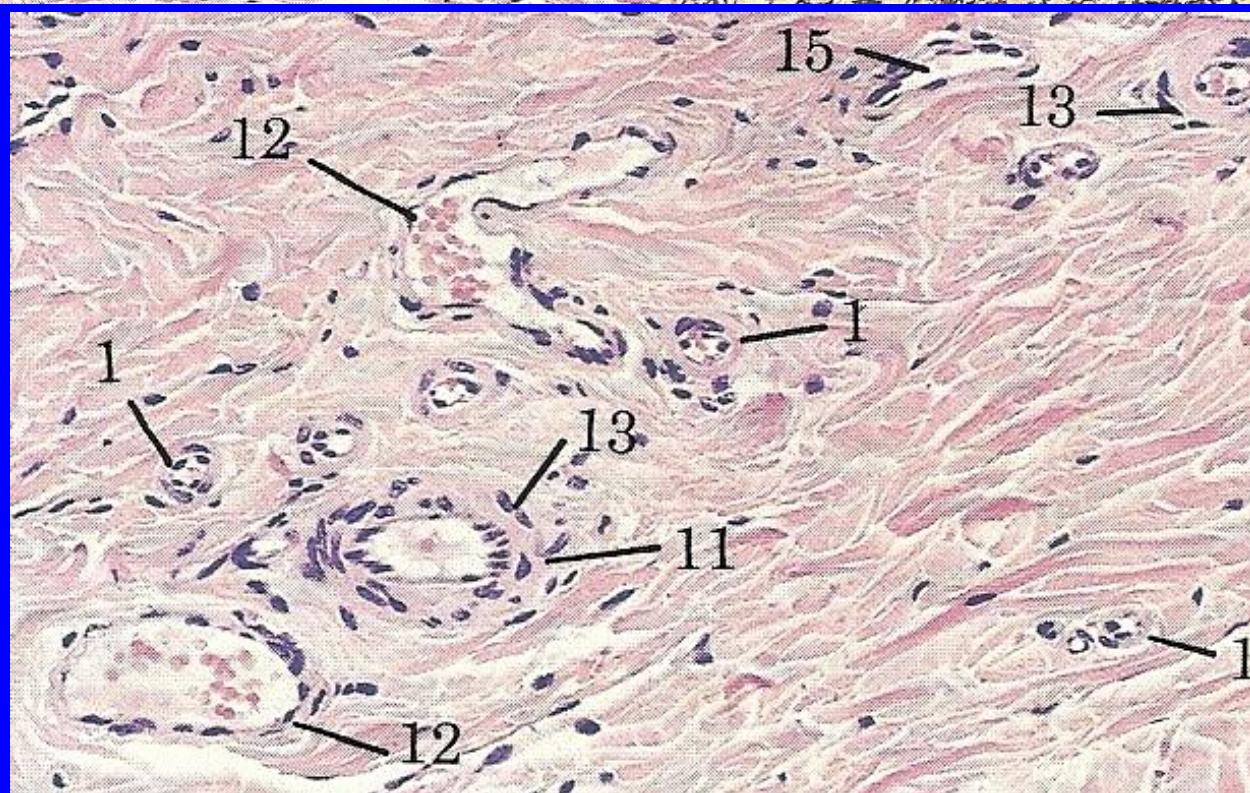
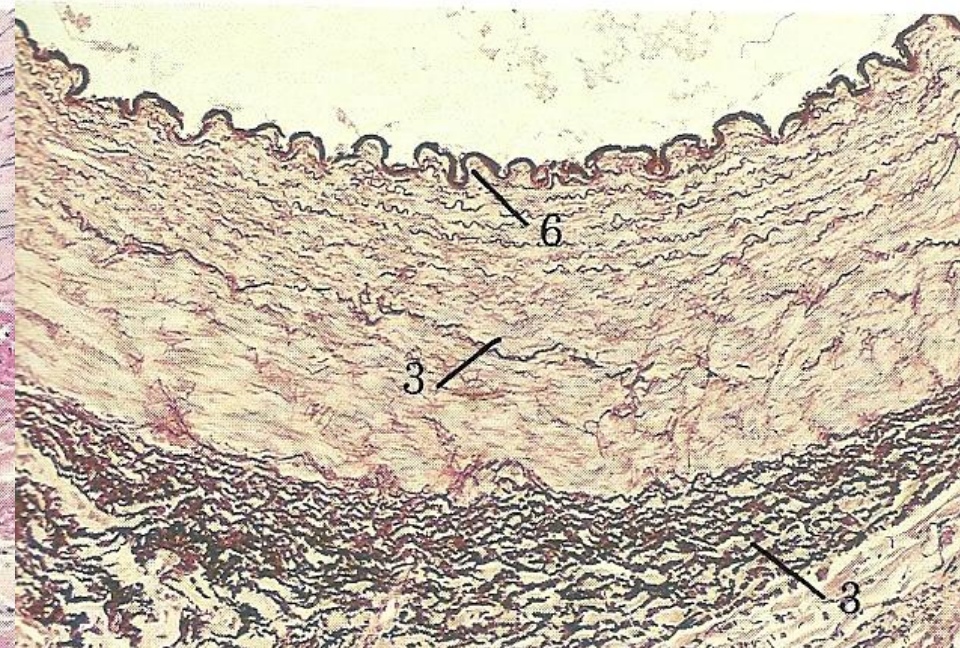
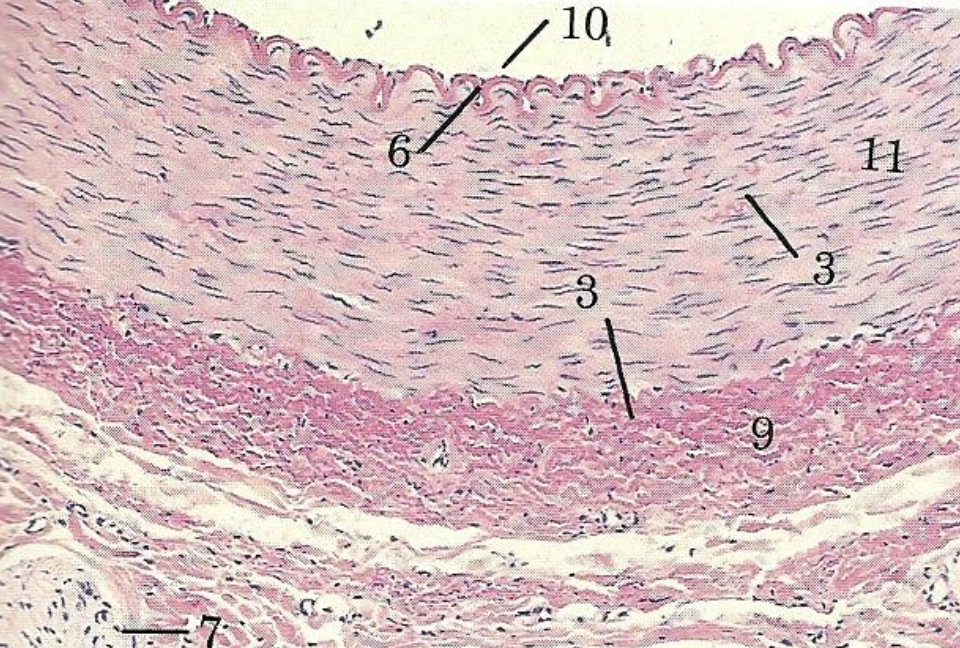
Túnica externa - Adventícia



artéria

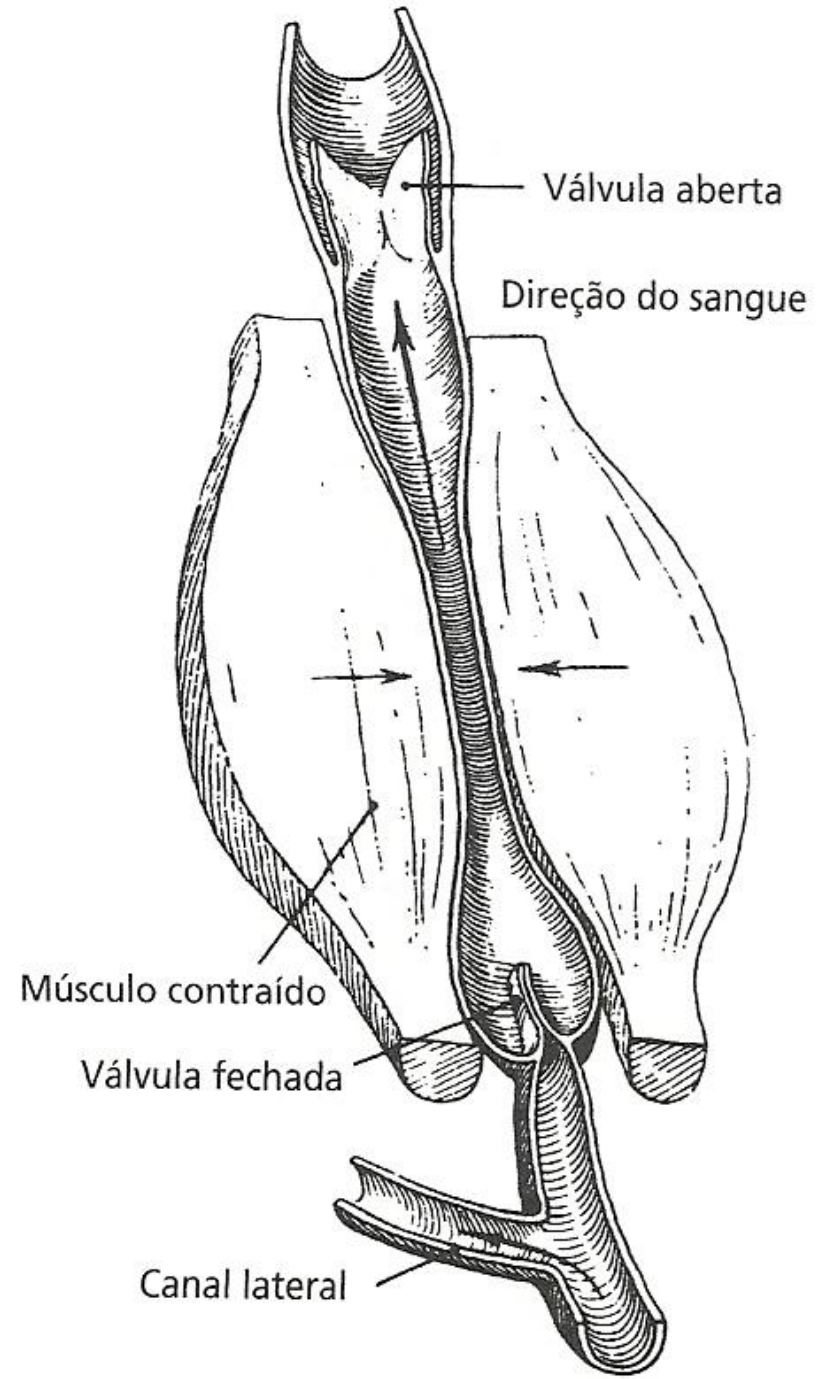
veia





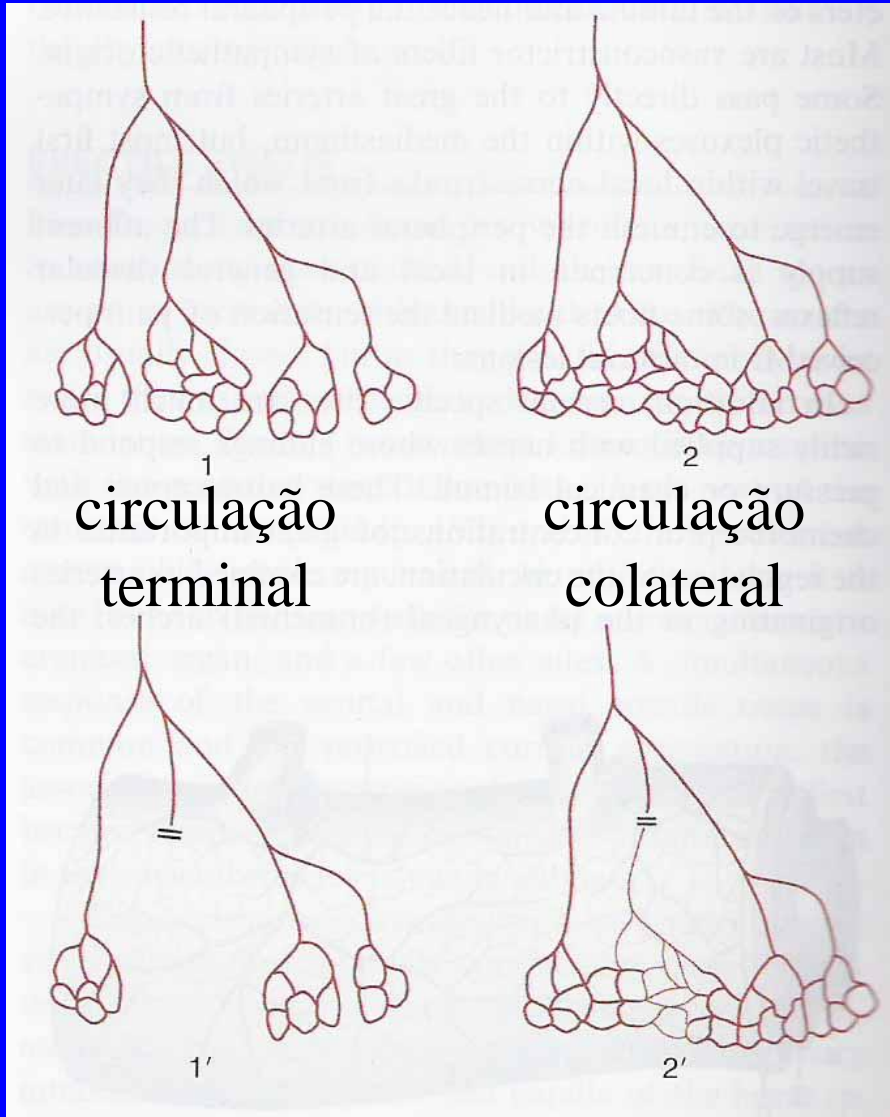
Veias e vasos linfáticos

- válvulas direcionam o fluxo

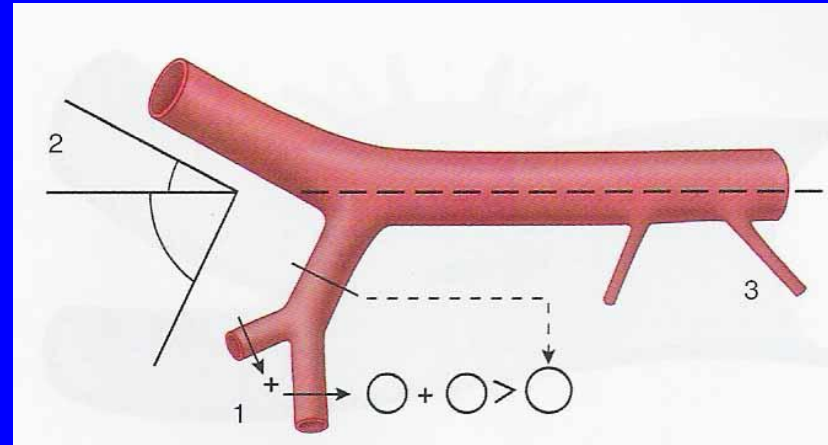


Artérias

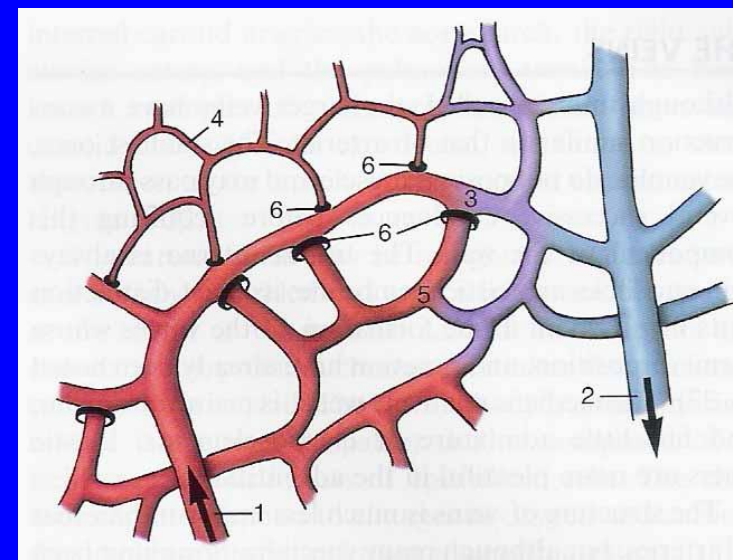
anastomoses



ramificação



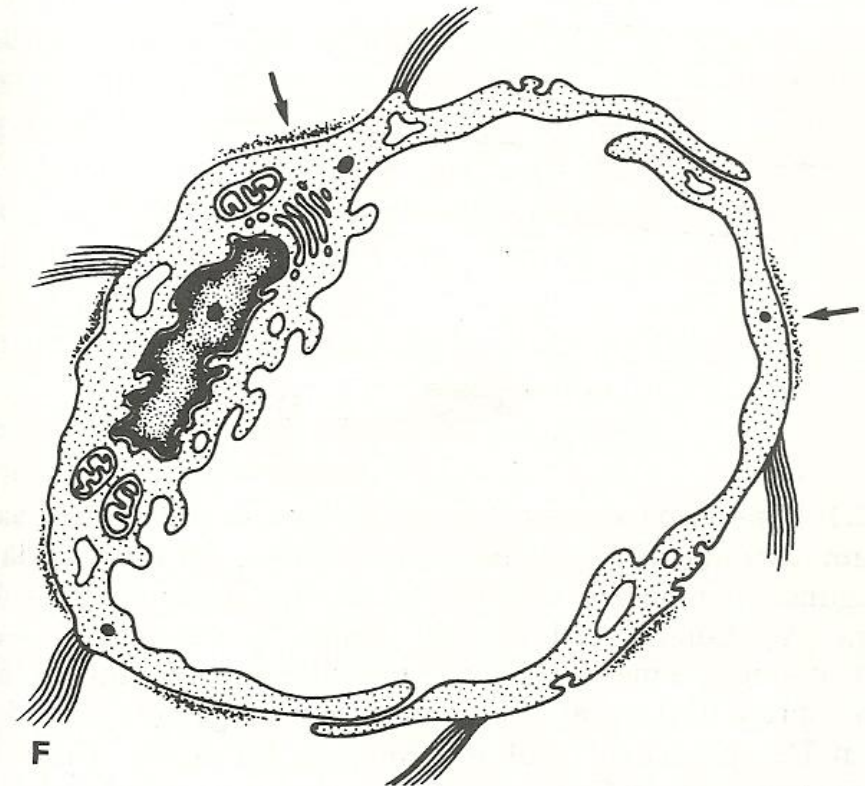
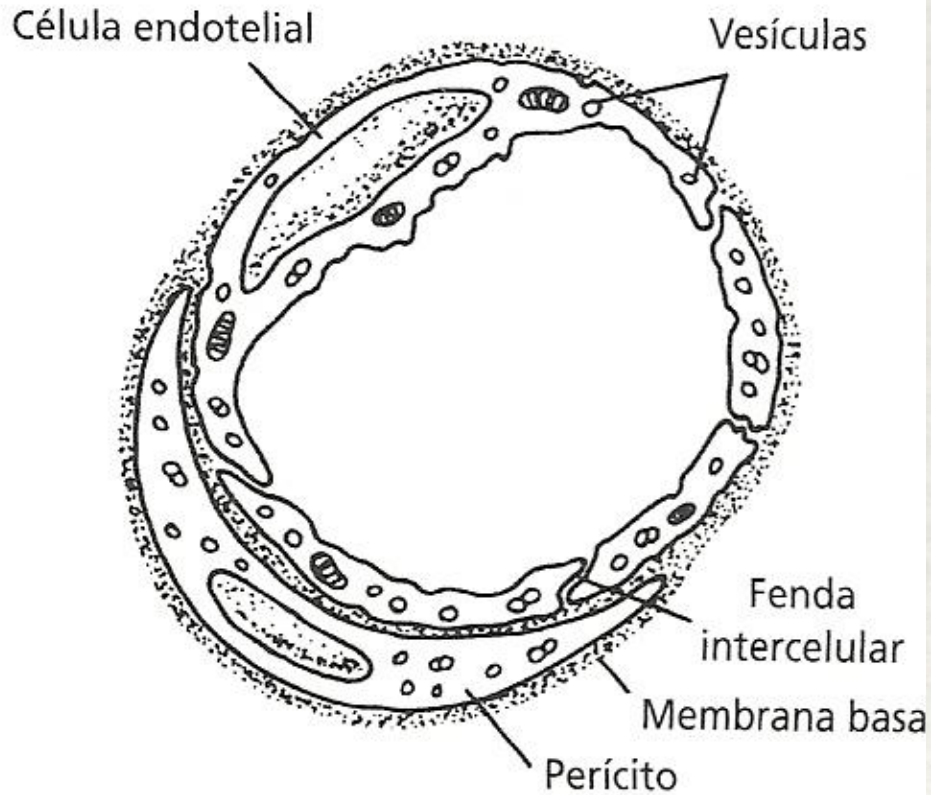
capilares



Capilares

sanguíneo

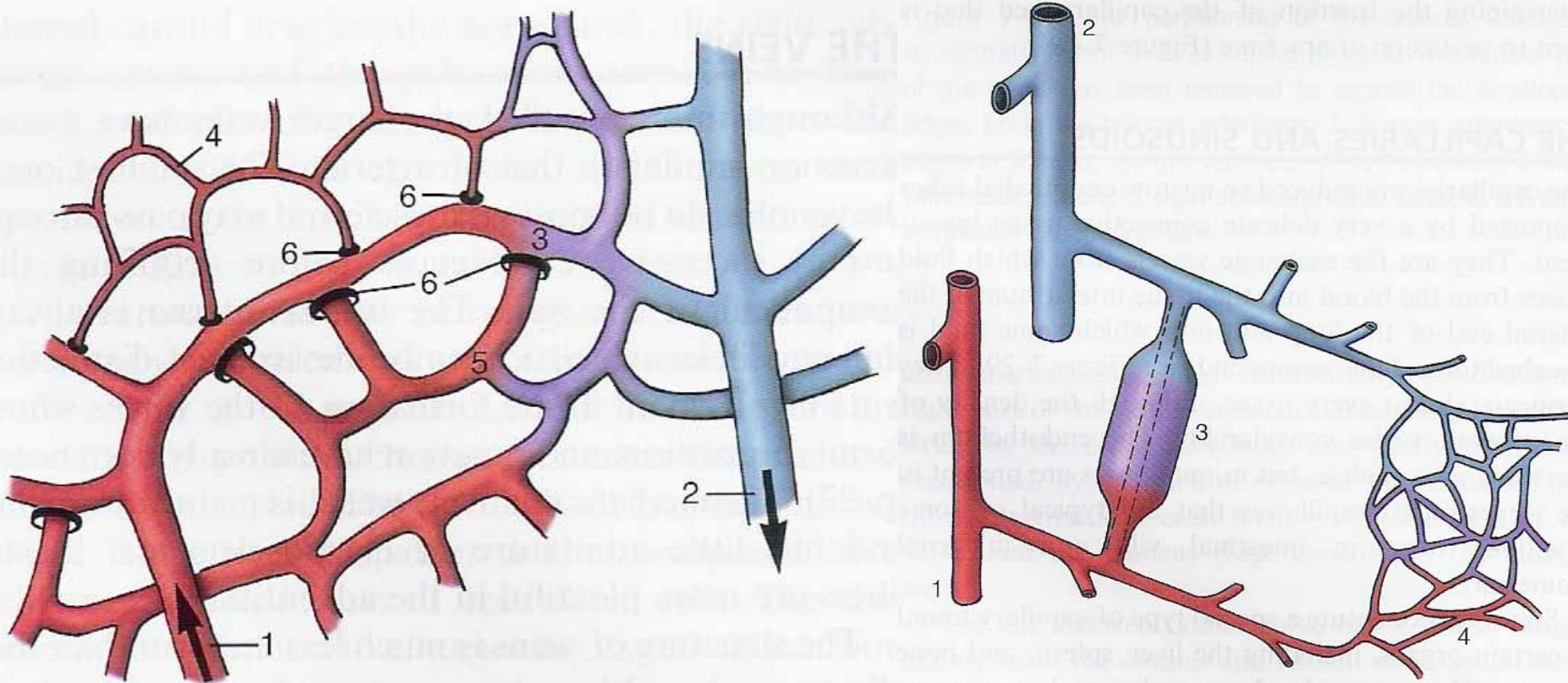
linfático



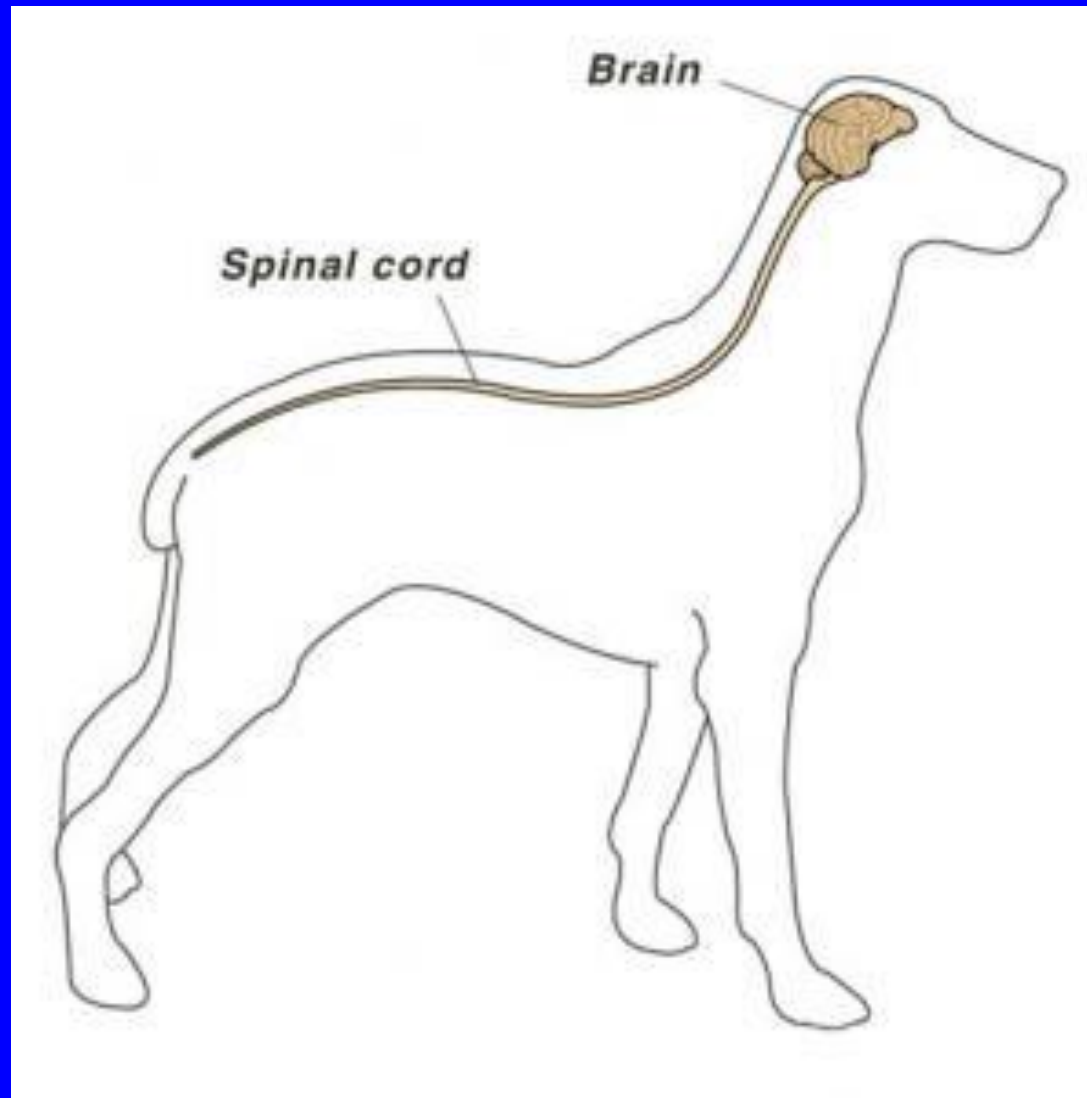
Generalidades sobre sistema circulatório

Capilares

Anastomose arteriovenosa



Generalidades sobre sistema nervoso



Generalidades sobre sistema nervoso

Sistema nervoso central

Encéfalo

Cérebro

Cerebelo

Tronco encefálico

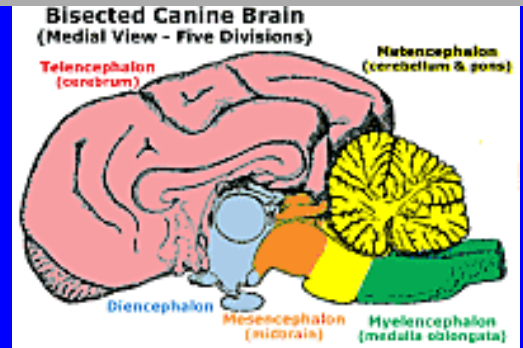
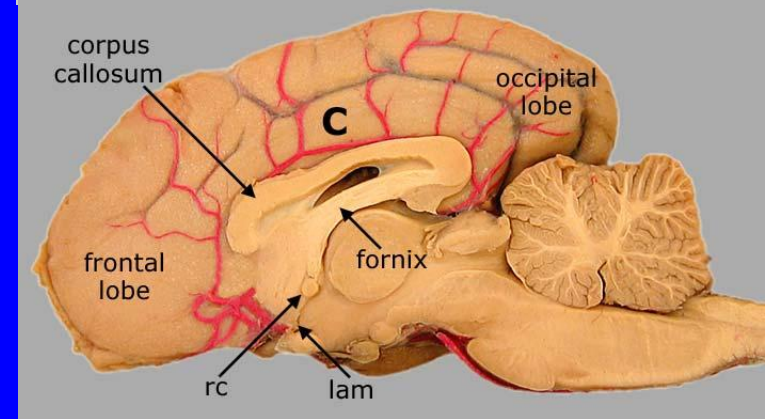
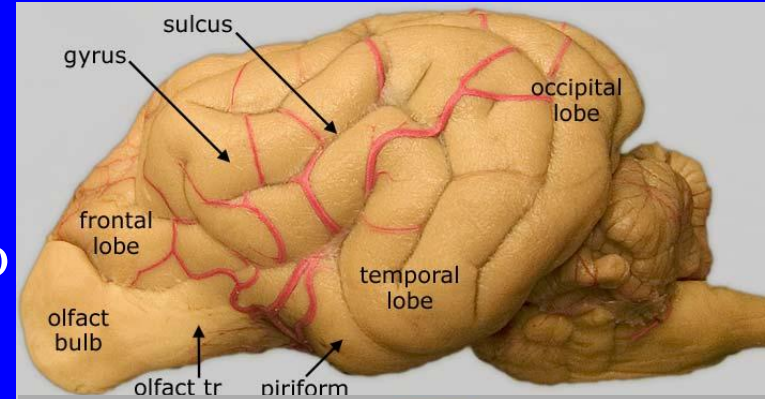
Medula espinhal

Sistema nervoso periférico

Nervos

Terminações nervosas

Gânglios



Generalidades sobre sistema nervoso

Sistema nervoso central

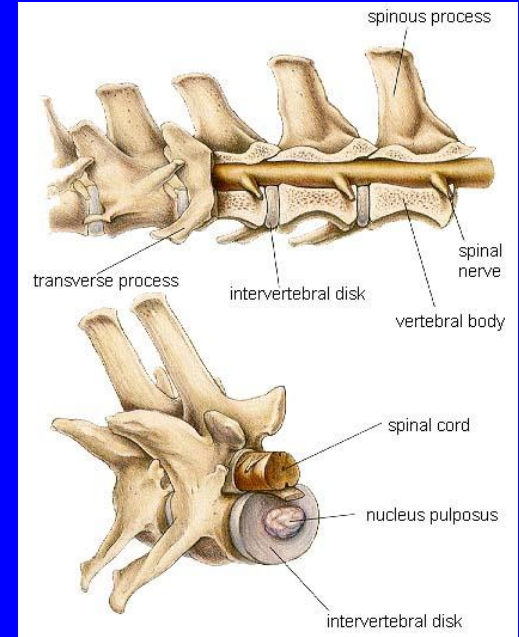
Encéfalo

Cérebro

Cerebelo

Tronco encefálico

Medula espinhal

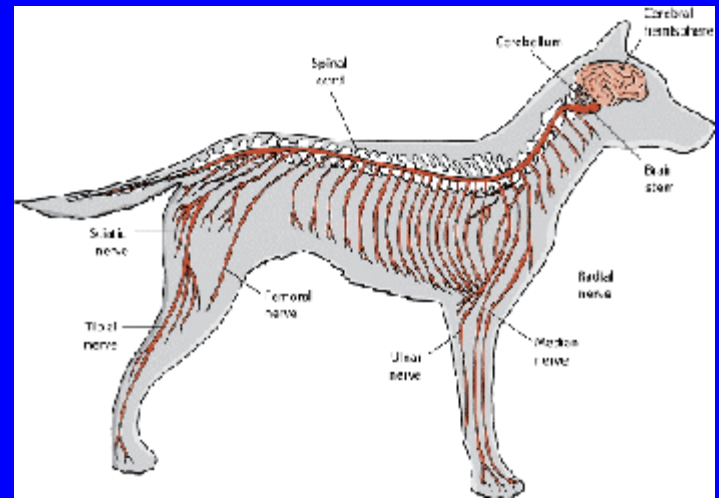


Sistema nervoso periférico

Nervos

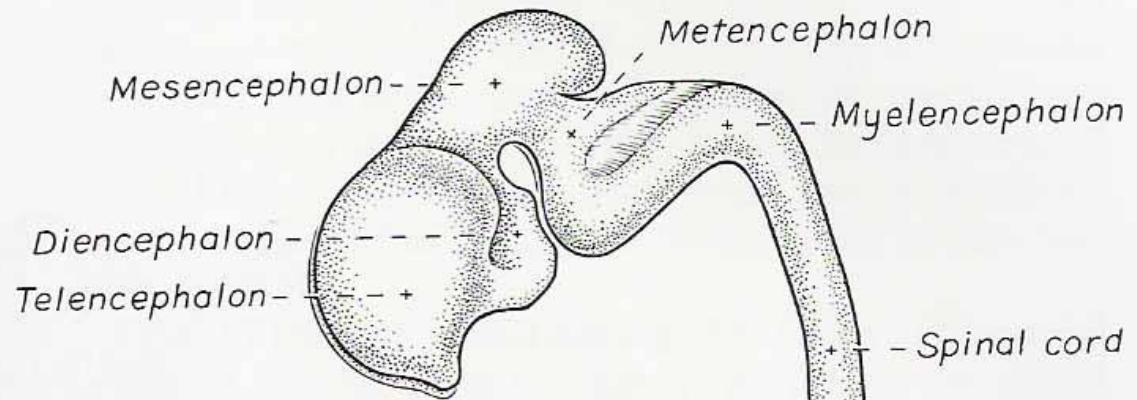
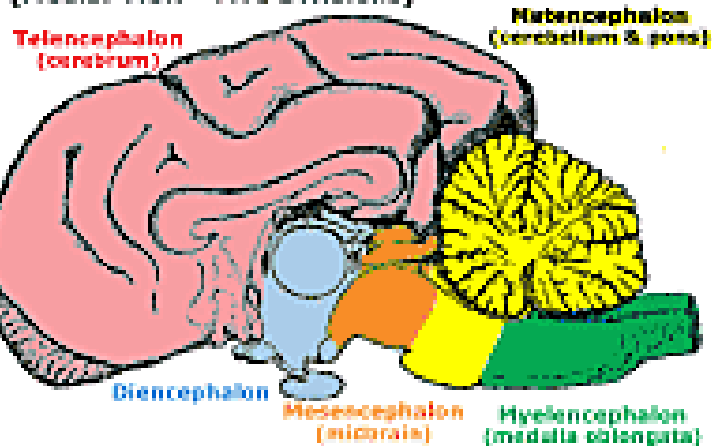
Terminações nervosas

Gânglios



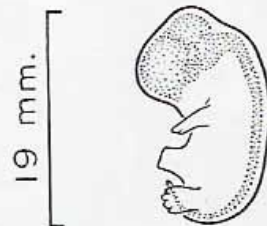
Generalidades sobre sistema nervoso

Bisected Canine Brain
(Medial View - Five Divisions)



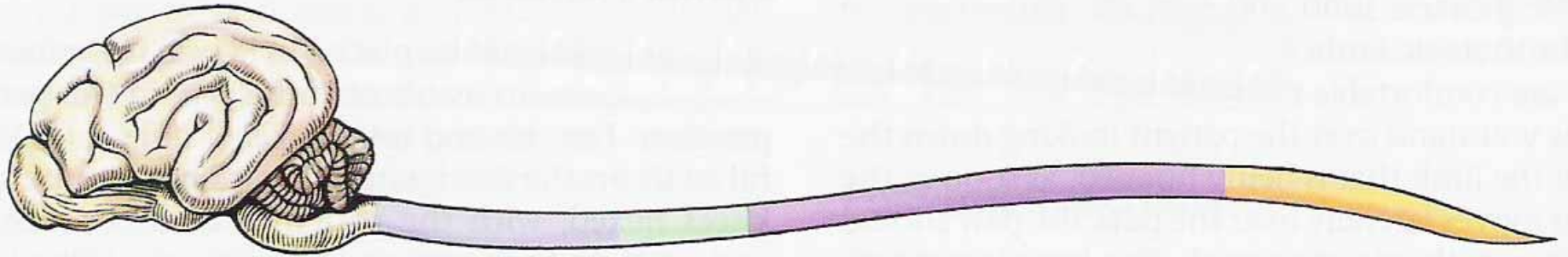
Sistema nervoso central

Embriologia



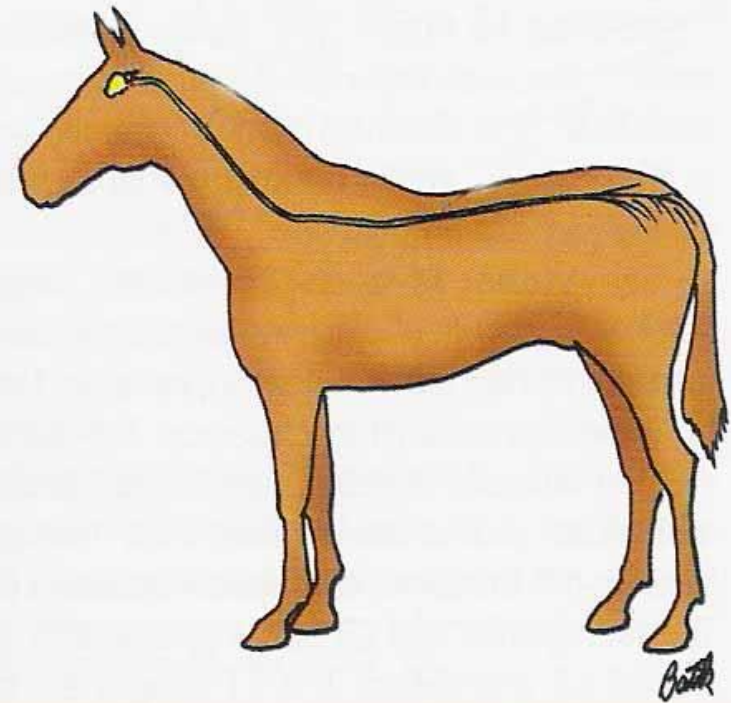
M. NEWSON.

Generalidades sobre sistema nervoso



Encéfalo e medula espinhal

Crânio e coluna vertebral



Generalidades sobre sistema nervoso

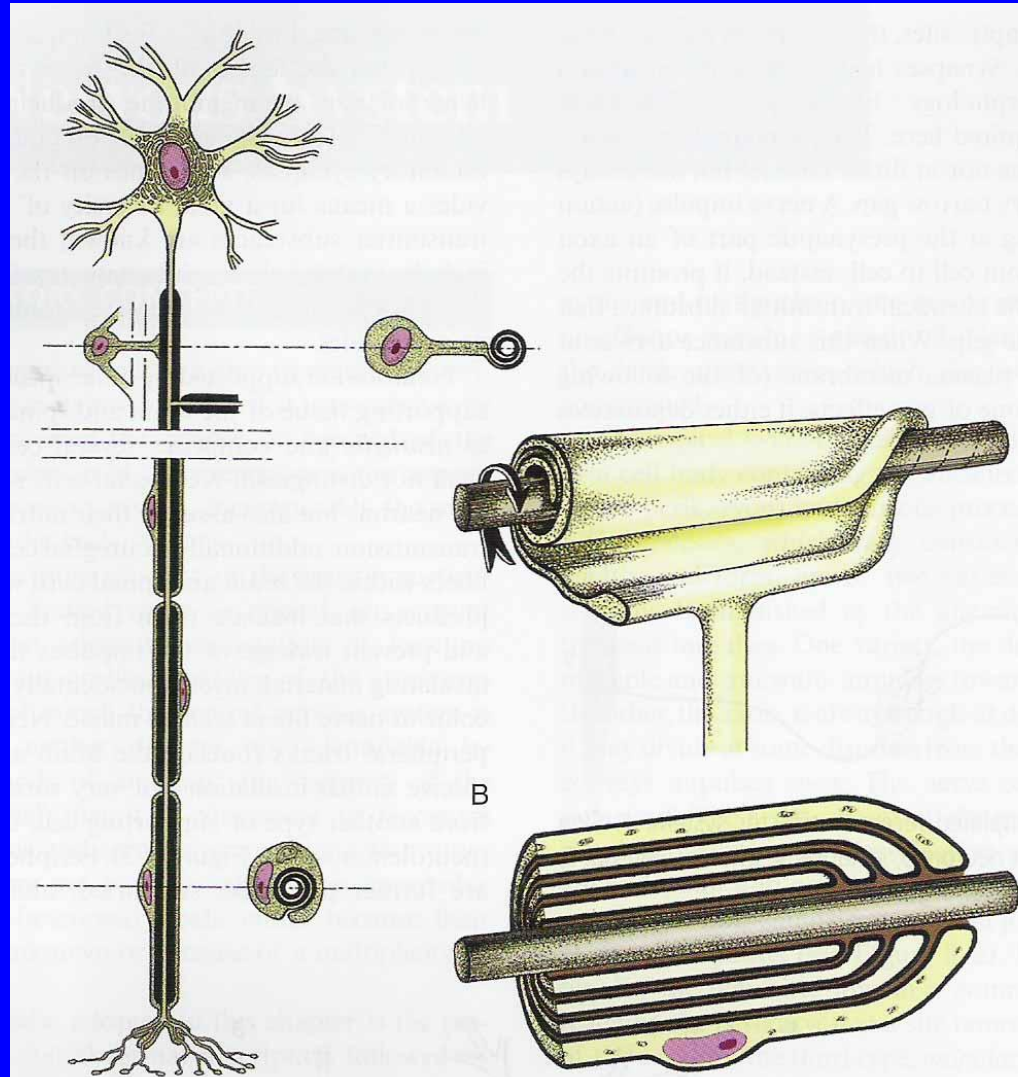
Neurônio

Corpo celular

Dendritos (aferente)

Axônio (eferente)

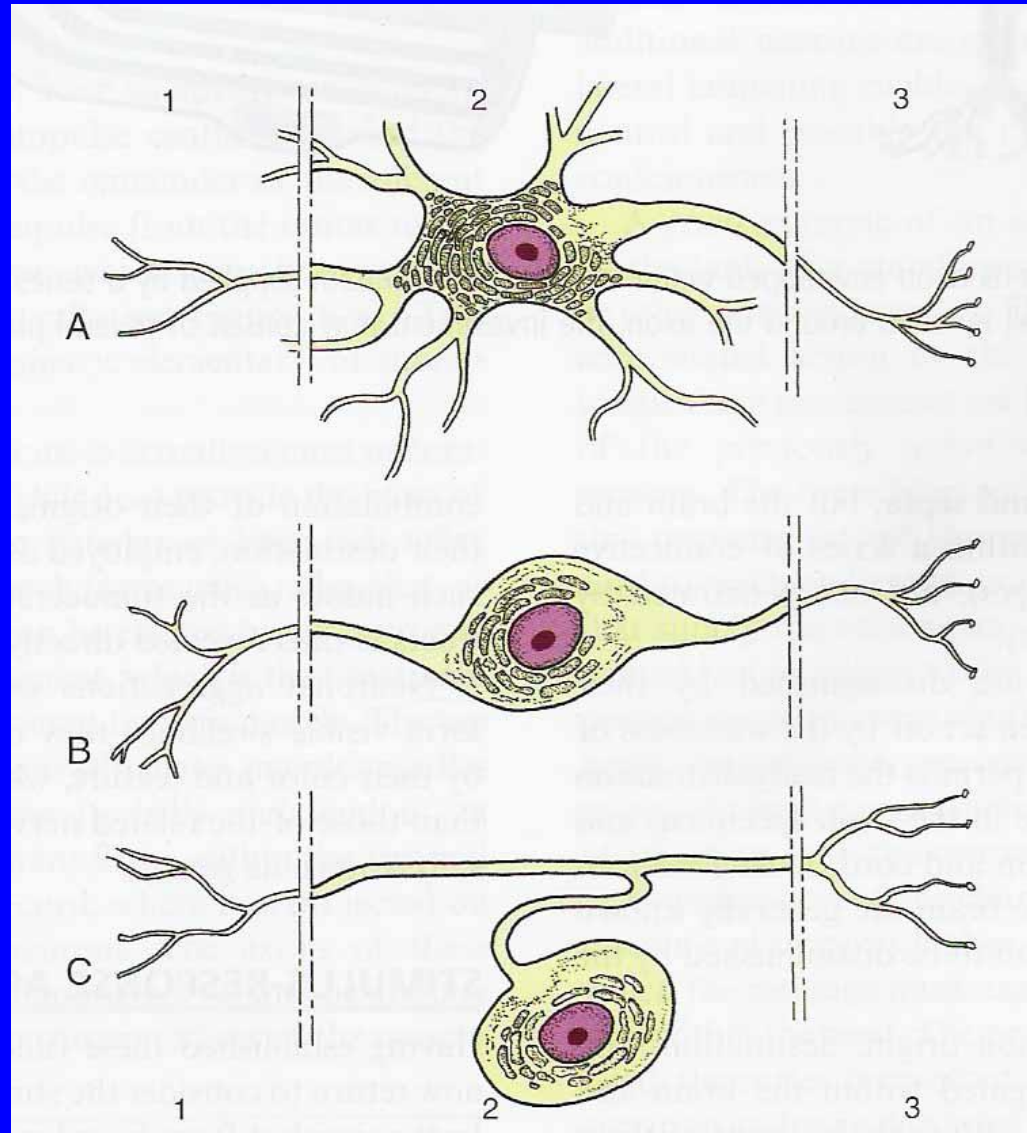
Mielina (cel. Schwann)



Generalidades sobre sistema nervoso

Tipos de neurônio

- Multipolar
- Bipolar
- Pseudo-unipolar



Neurônio

AFFERENT NEURONS

EFFERENT NEURONS

Olfactory

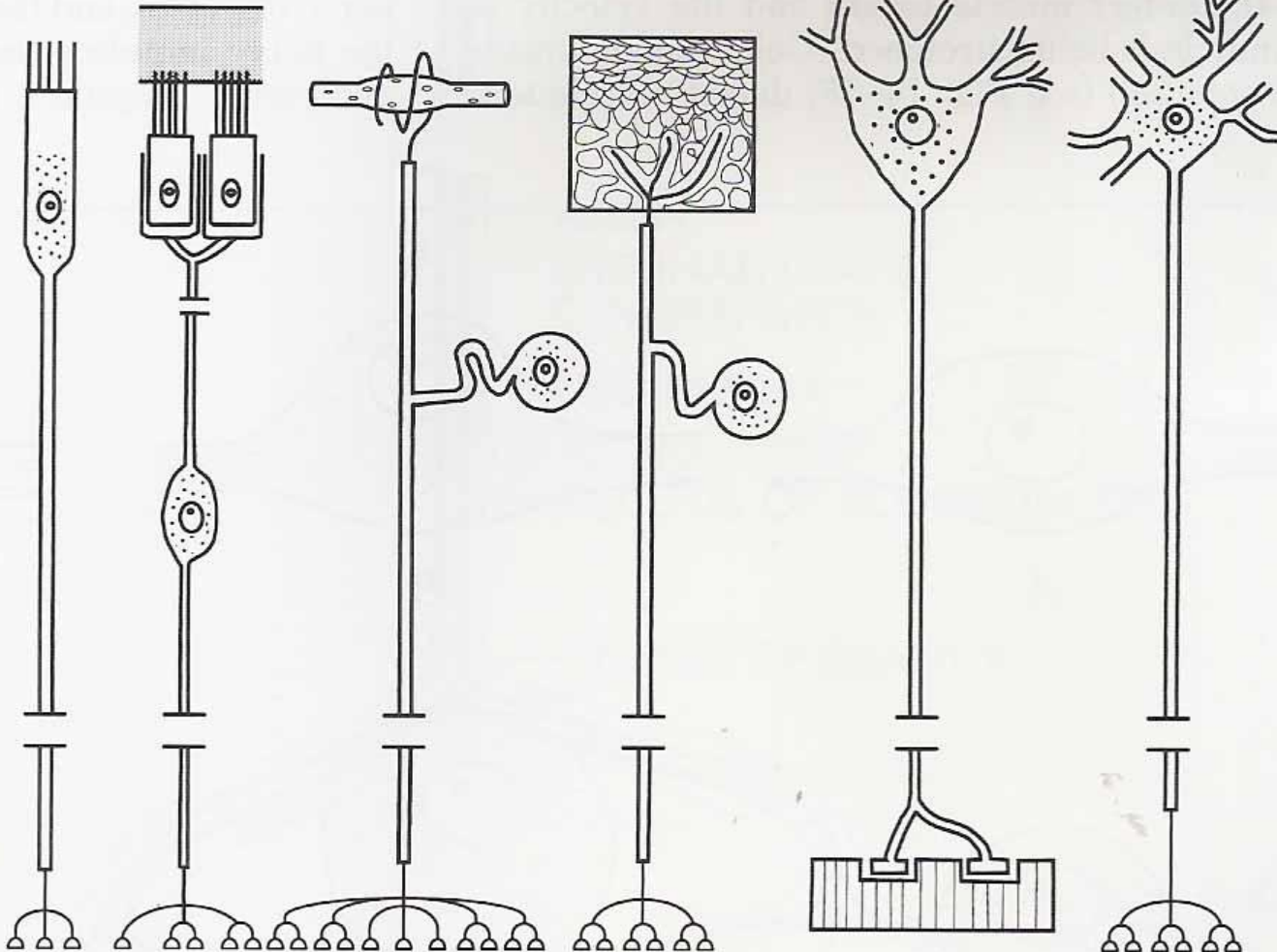
Auditory

Muscle spindle

Cutaneous

Lower motor neurons

Interneurons



Nervo

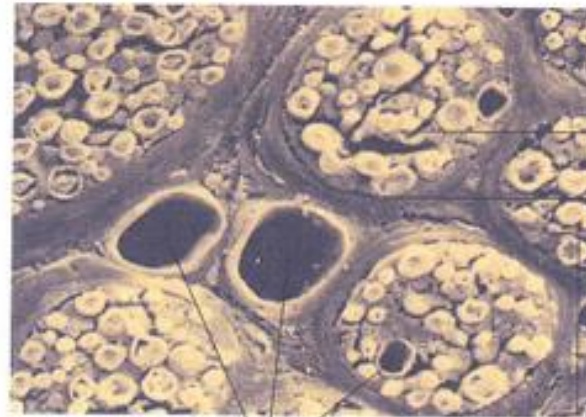
Motor
Axônio

Sensitivo

Axônio (dendrito funcional)

Misto

Axônios e Axônio (dendrito funcional)



Endoneuro

Perineuro

Fascículo

Vasos
sangüíneos



Epineuro

Espaço
linfático

Artéria
e veia

Gordura

Endoneuro

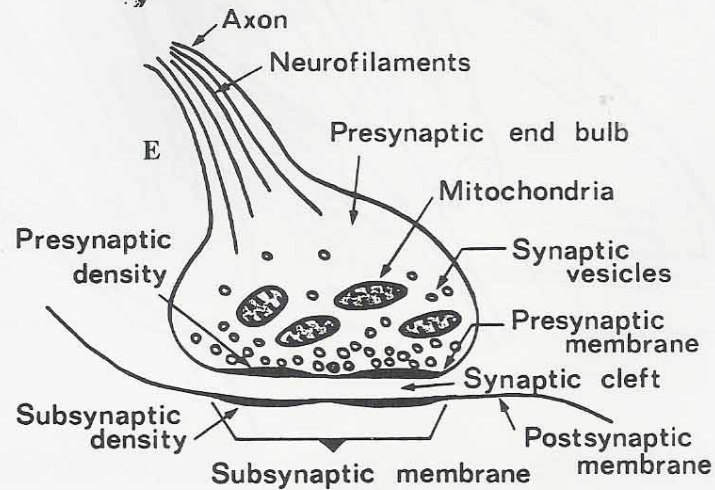
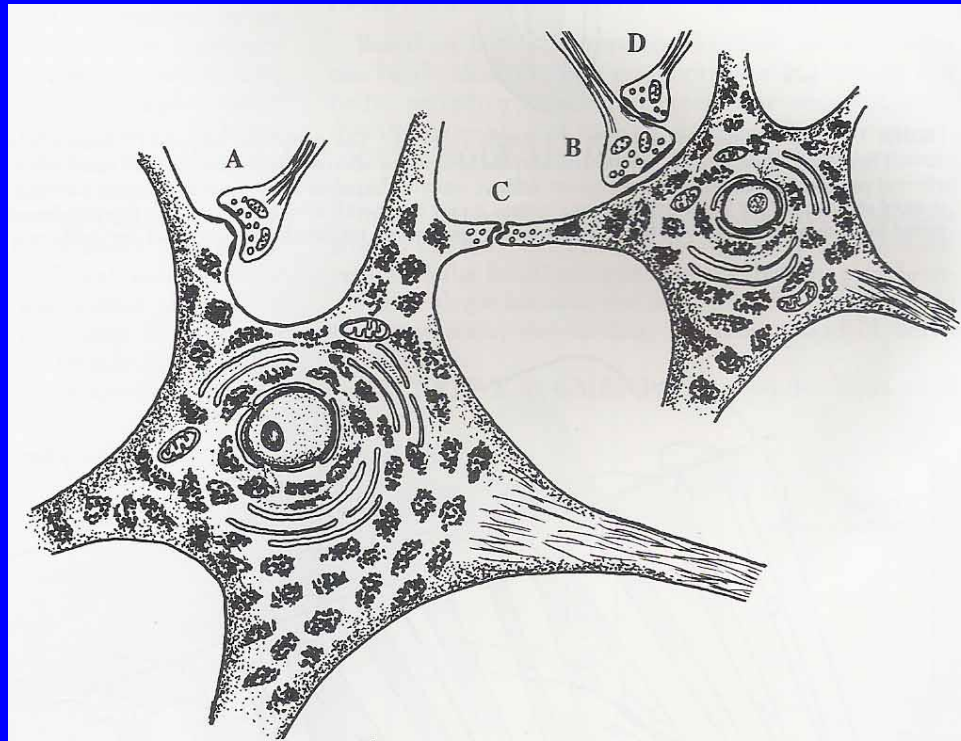
Axônio

Fascículo

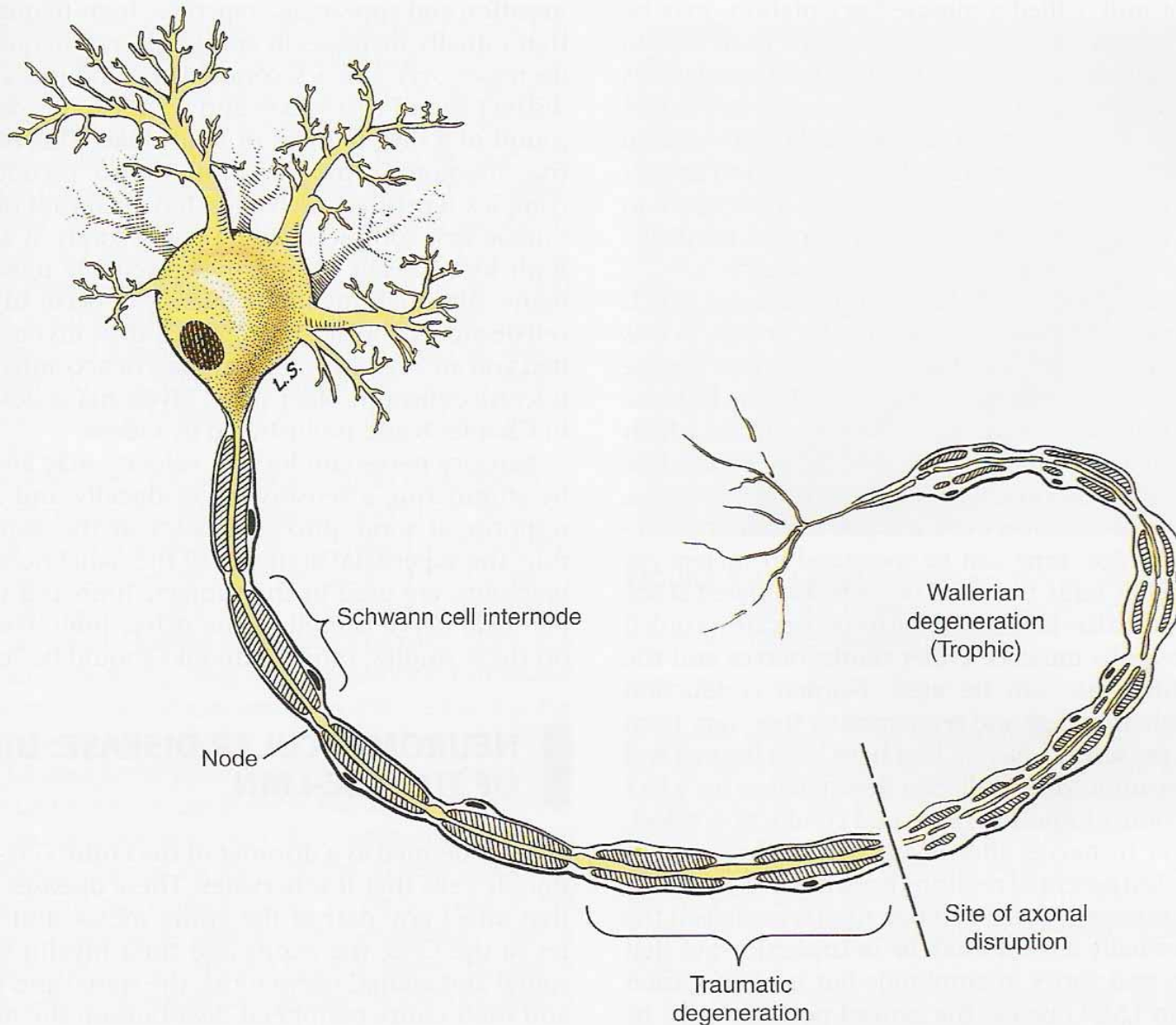
Perineuro

Células de Schwann

Sinapse



Regeneração



Como diferenciar artérias, veias e nervos macroscopicamente?

Artérias – Ocas com parede muscular e elástica

Veias – Ocas com parede fina, transparente

Nervos – Brancos e maciços

