

Artéria aorta torácica e abdominal

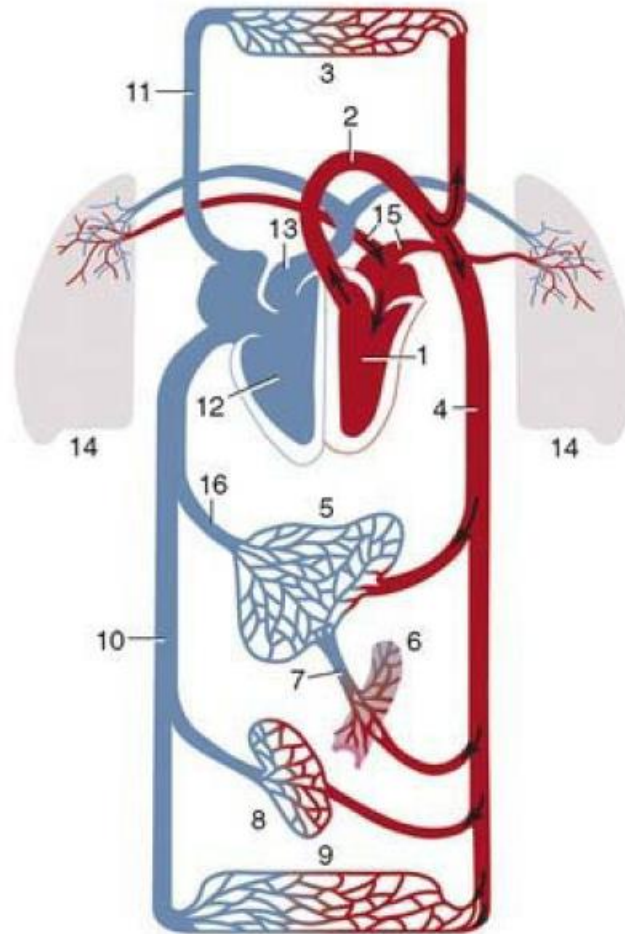
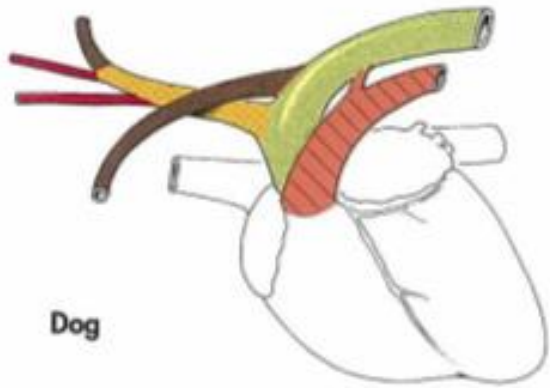
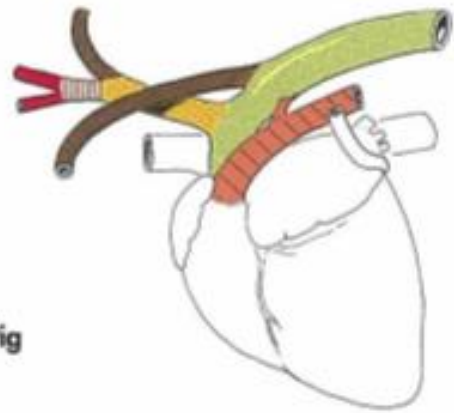


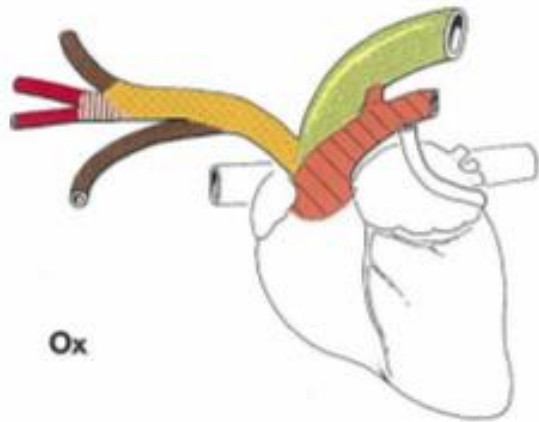
Figura 7-4 Desenho esquemático das circulações sistêmica e pulmonar. *1*, ventrículo esquerdo; *2*, aorta; *3*, leito capilar da cabeça, pescoço e membro torácico; *4*, aorta abdominal; *5*, fígado; *6*, leito capilar dos intestinos; *7*, veia porta; *8*, leito capilar dos rins; *9*, leito capilar da parte caudal do corpo; *10*, veia cava caudal; *11*, veia cava cranial; *12*, ventrículo direito; *13*, tronco pulmonar; *14*, leito capilar dos pulmões; *15*, veia pulmonar; *16*, veias hepáticas.



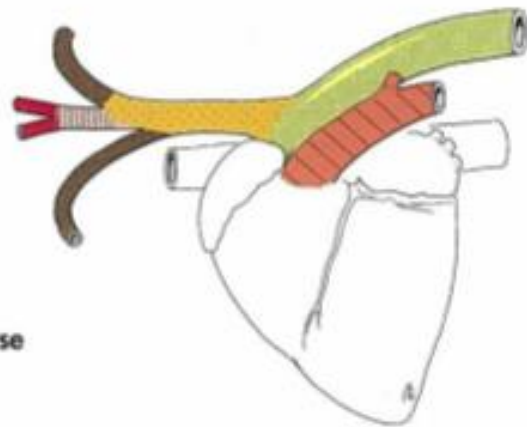
Dog



Pig



Ox

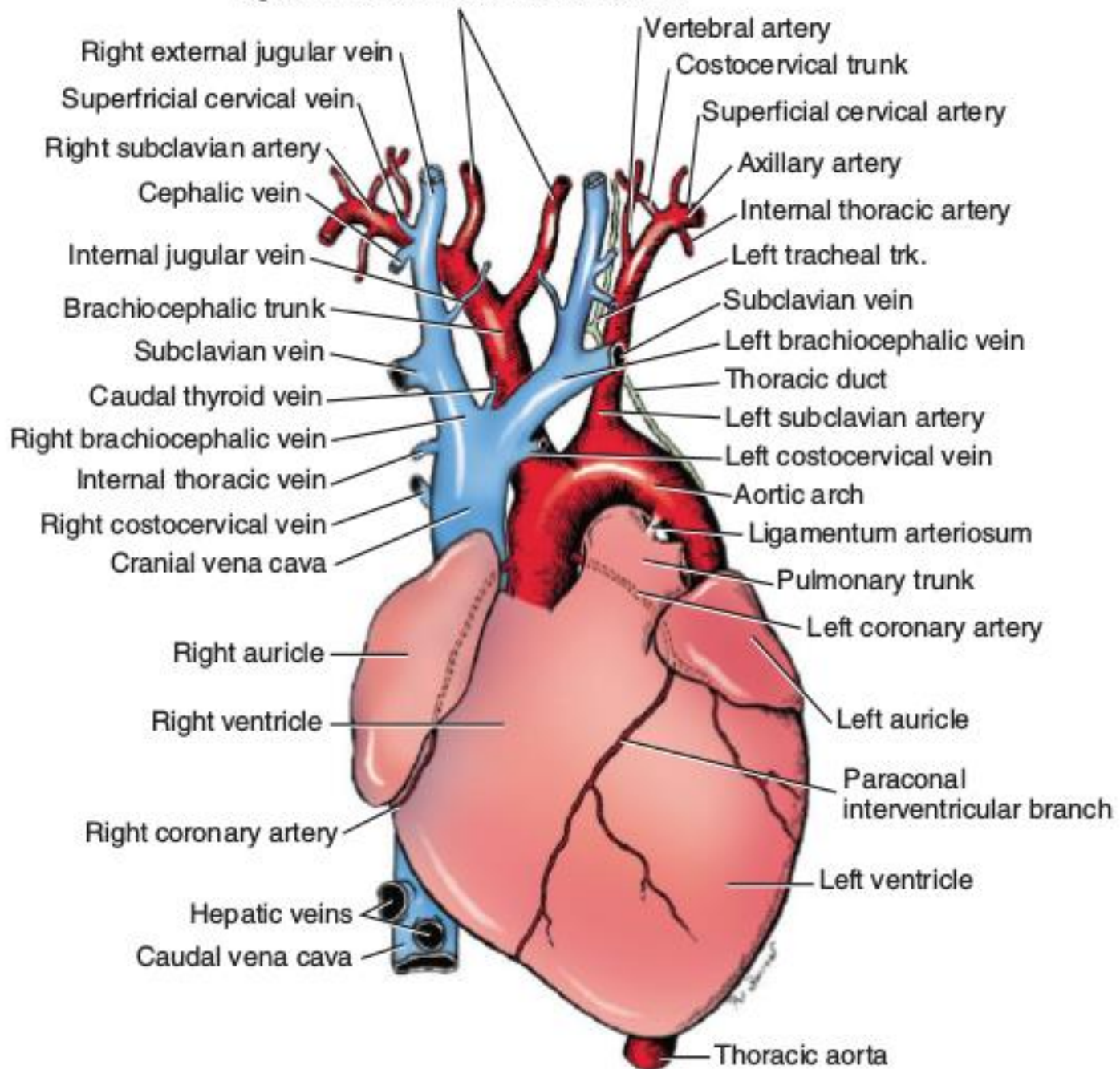


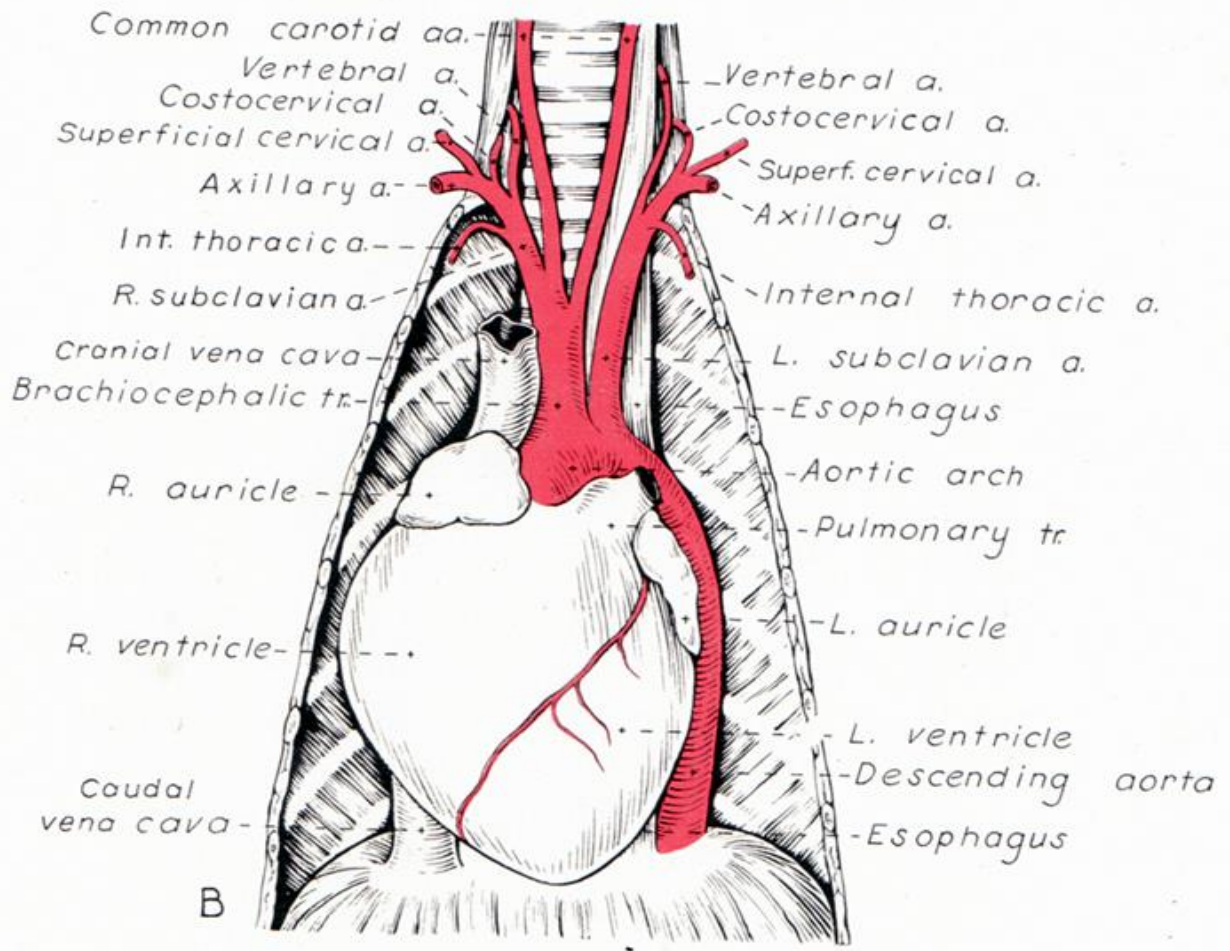
Horse

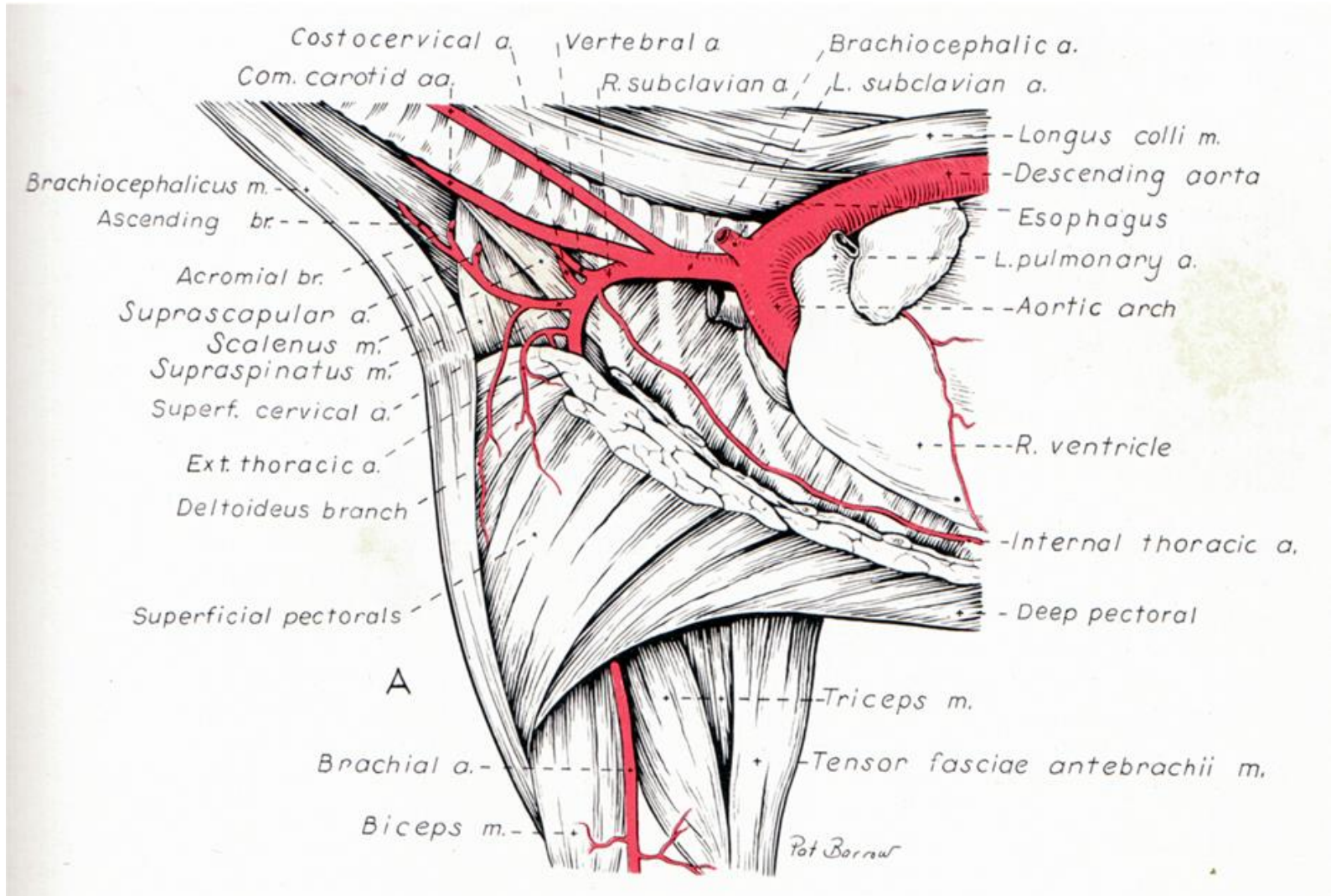
- Aorta
- Brachiocephalic trunk
- Subclavian artery
- Bicarotid trunk

- Common carotid artery
- Pulmonary trunk
- Cranial vena cava, caudal vena cava with the left azygous vein

Right and left common carotid arteries







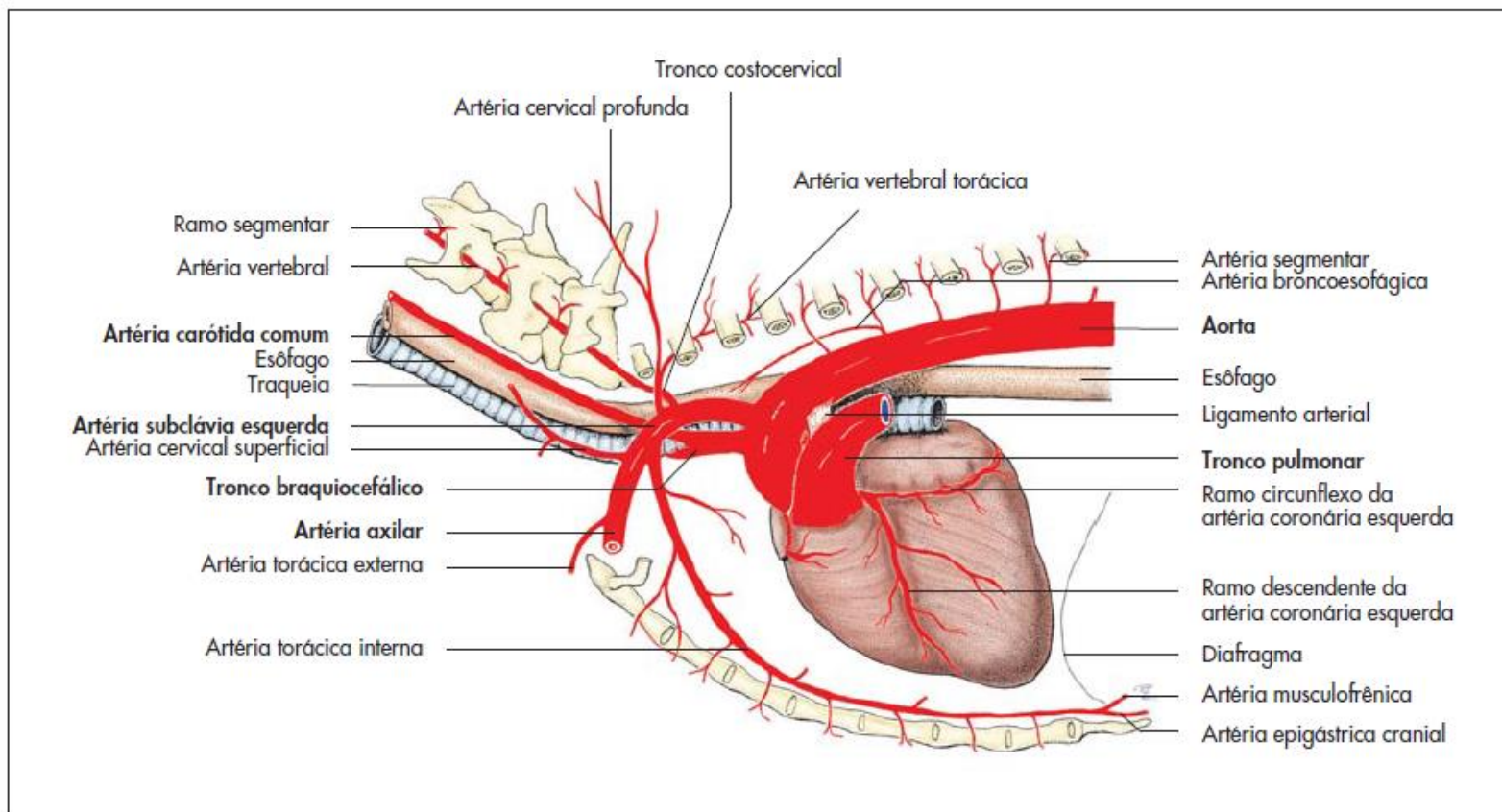


Figura 12-14 Artérias na base do coração e do mediastino cranial do cão (representação esquemática, vista lateral esquerda), segundo Ellenberger e Baum, 1943.

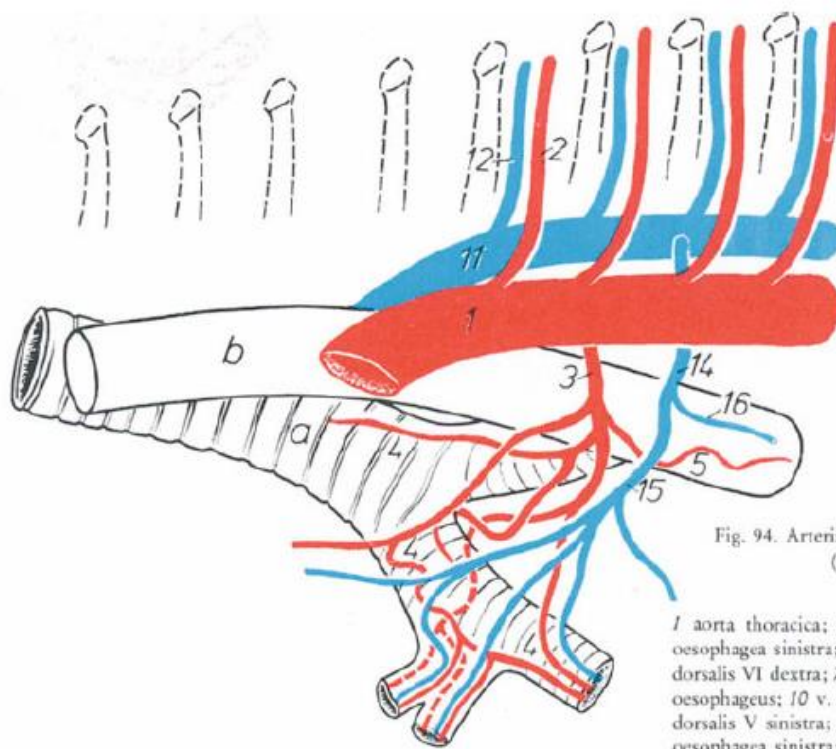


Fig. 94. Arteria and vena broncho-oesophagea sinistra of a dog.
(After Sützi, 1936, Diss., Hanover.)
a trachea; b oesophagus

1 aorta thoracica; 2 a. intercostalis dorsalis V sinistra; 3 a. broncho-oesophagea sinistra; 4 rr. bronchiales; 5 r. oesophageus; 6 a. intercostalis dorsalis VI dextra; 7 a. broncho-oesophagea dextra; 8 rr. bronchiales; 9 r. oesophageus; 10 v. cava cranialis; 11 v. azygos dextra; 12 v. intercostalis dorsalis V sinistra; 13 v. intercostalis dorsalis VI dextra; 14 v. broncho-oesophagea sinistra; 15 v. bronchialis; 16 v. oesophagea; 17 v. broncho-oesophagea dextra; 18 vv. bronchiales; 19 v. oesophagea

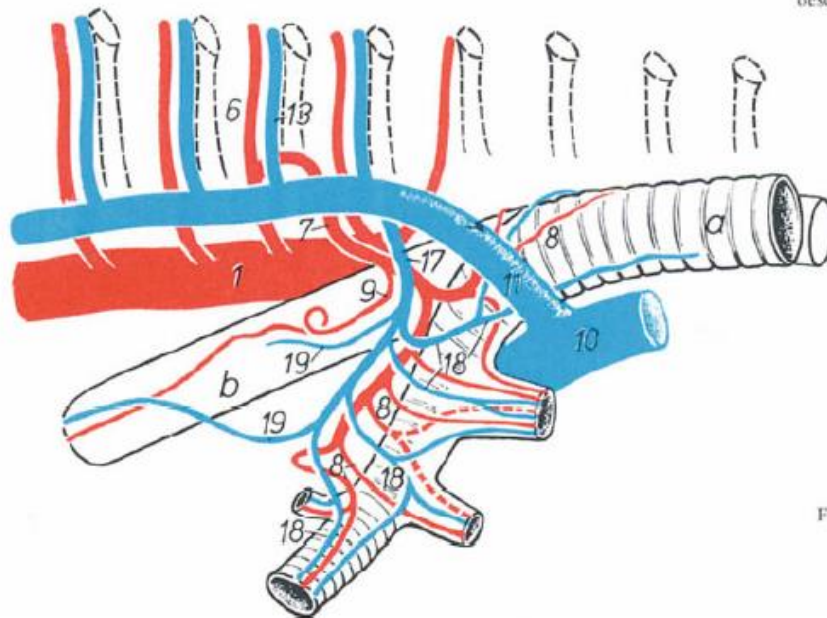


Fig. 95. Arteria and vena broncho-oesophagea dextra of a dog.
(After Sützi, 1936, Diss., Hanover.)

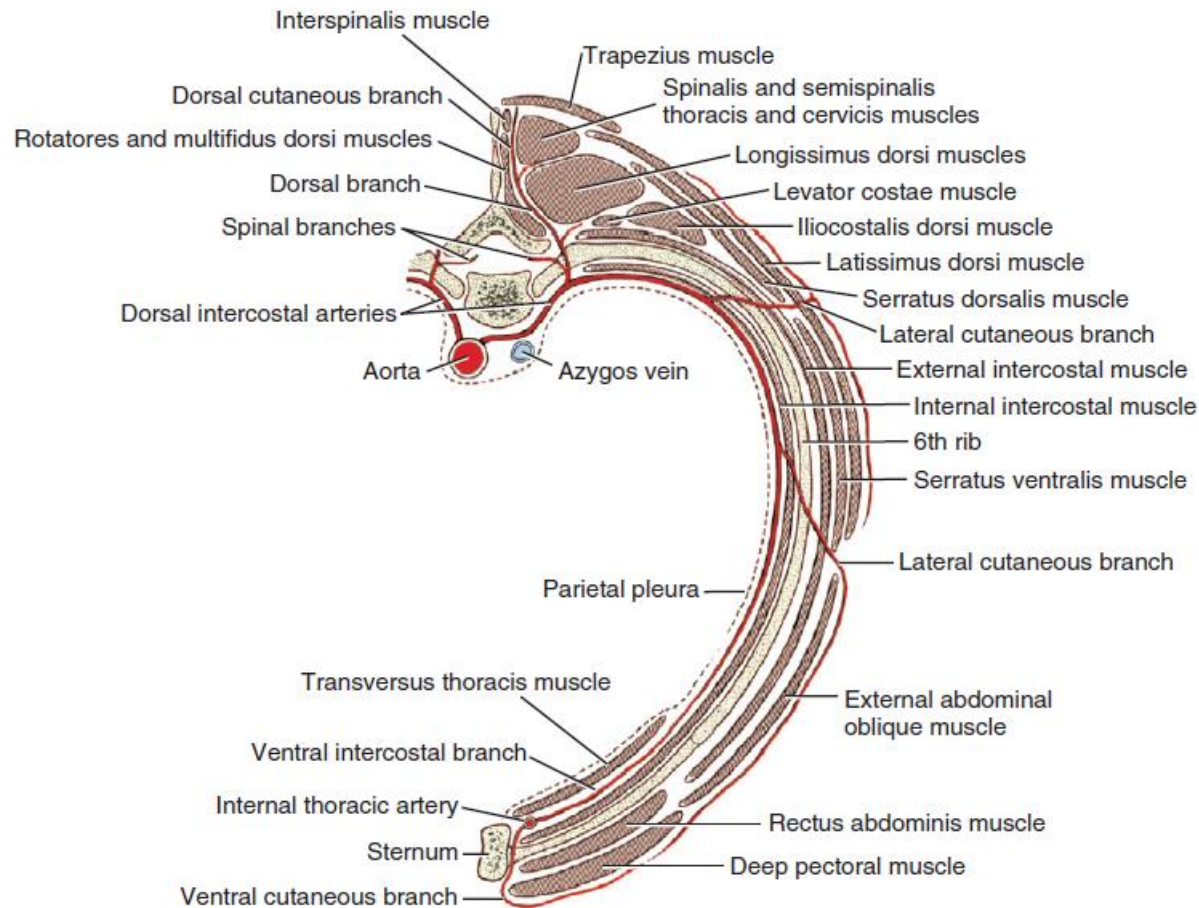
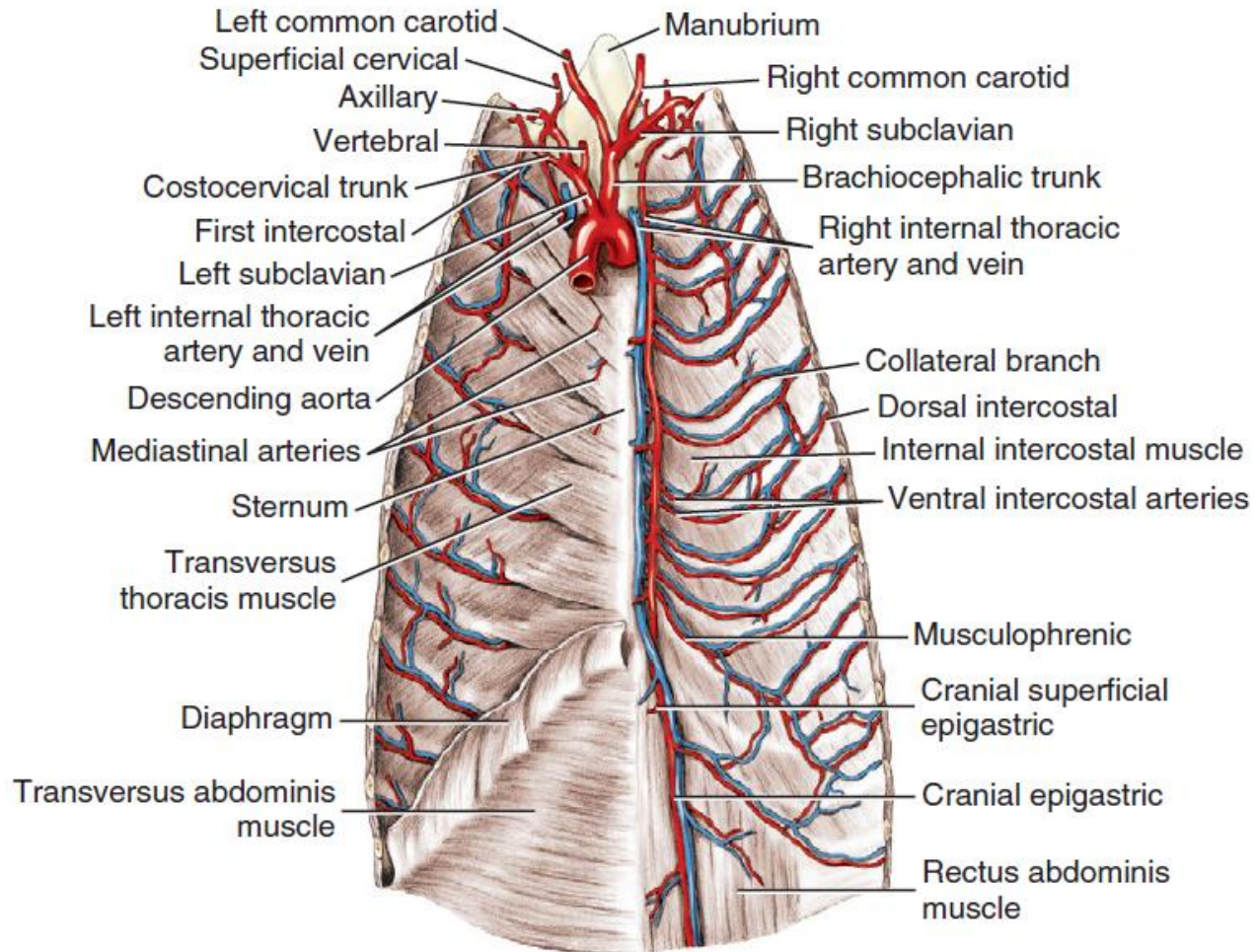


FIGURE 11-50 Scheme of the arteries of the thoracic wall in cross section, caudal aspect.



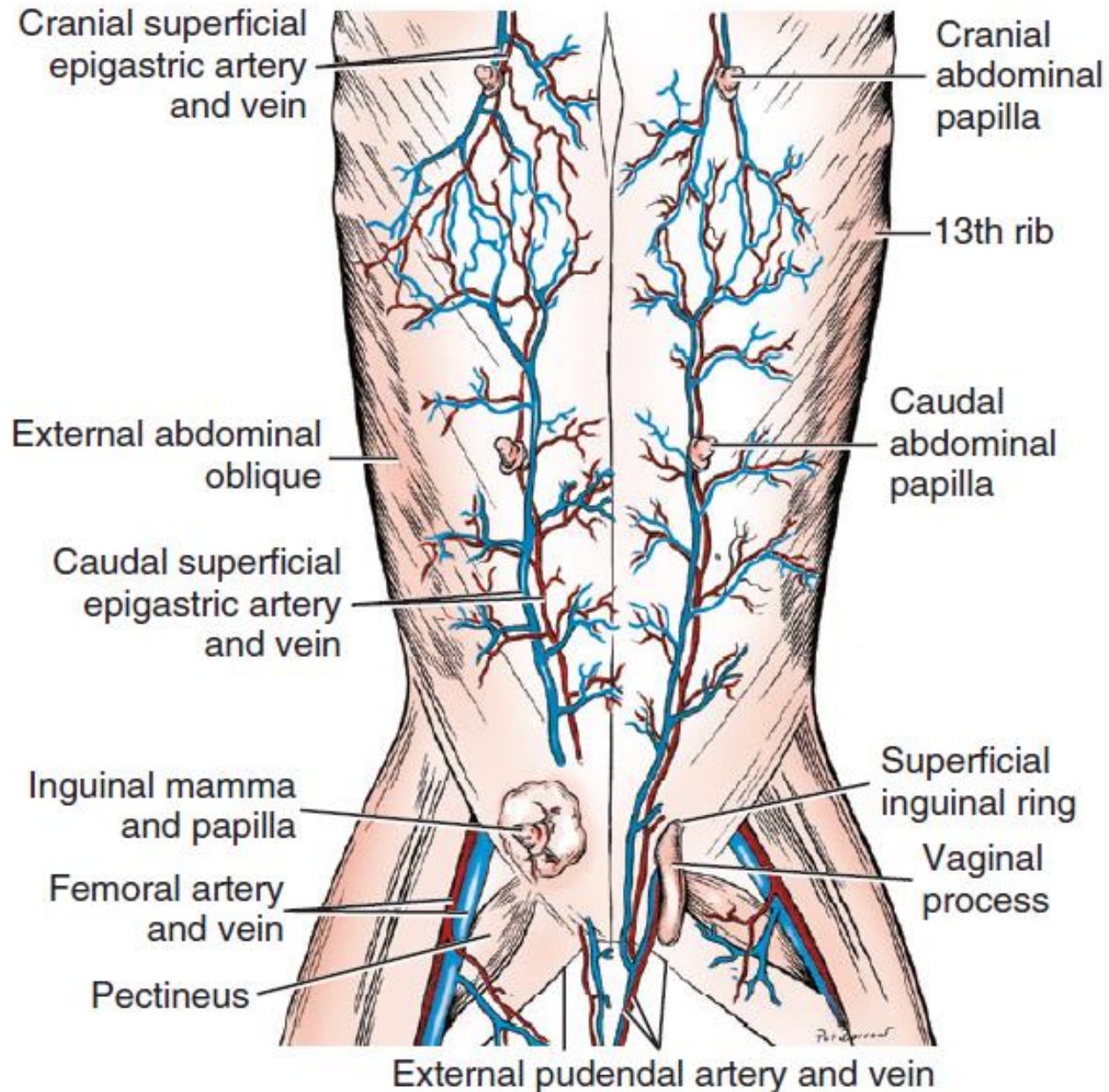


FIGURE 11-63 Superficial vessels of the abdomen, ventral aspect.

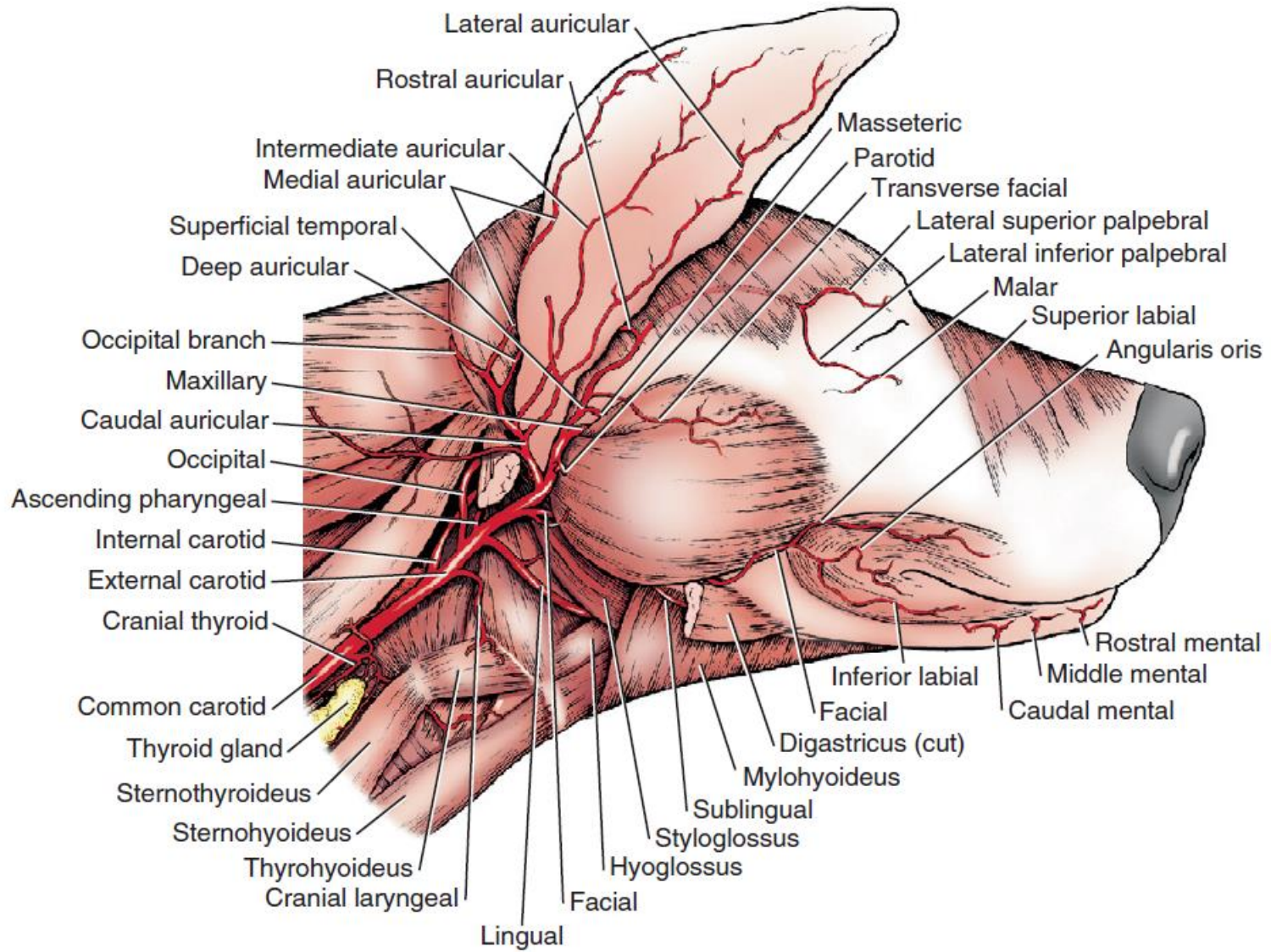
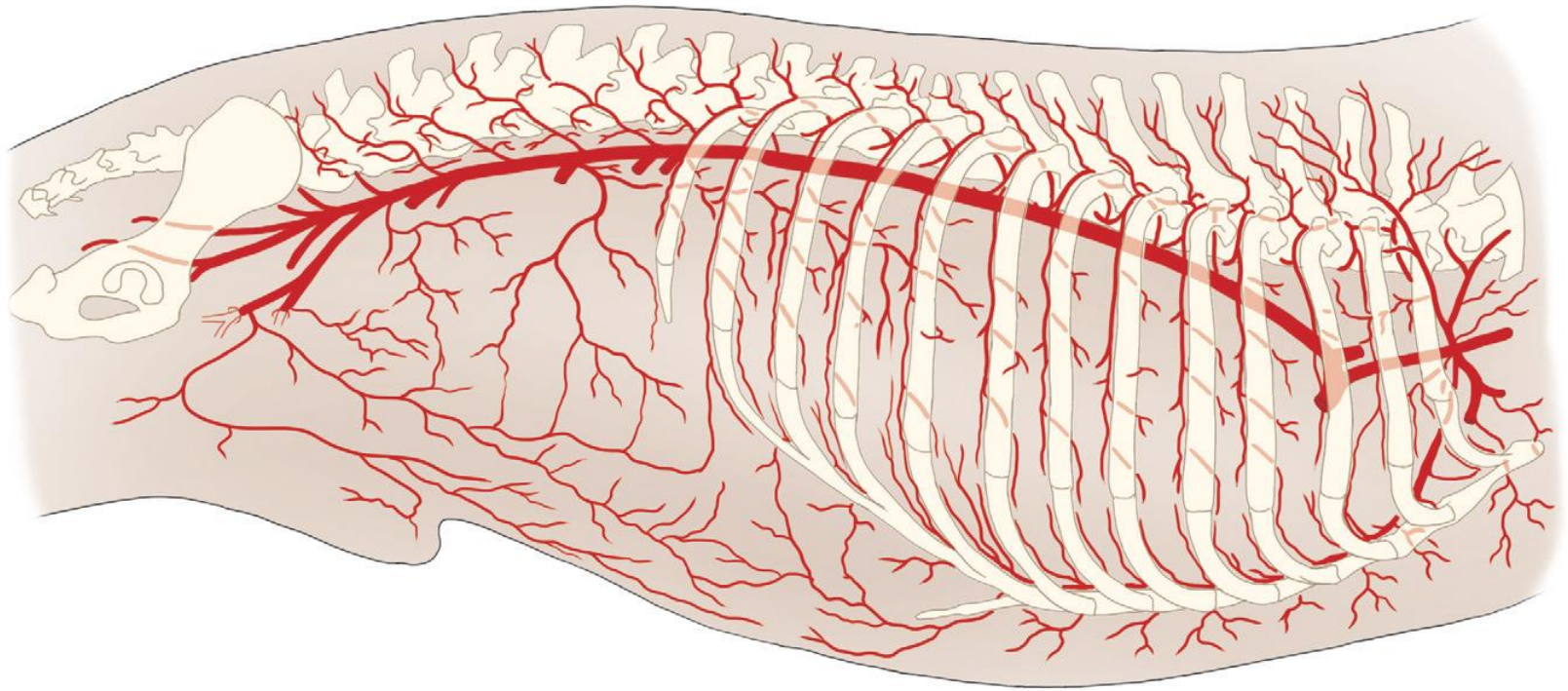
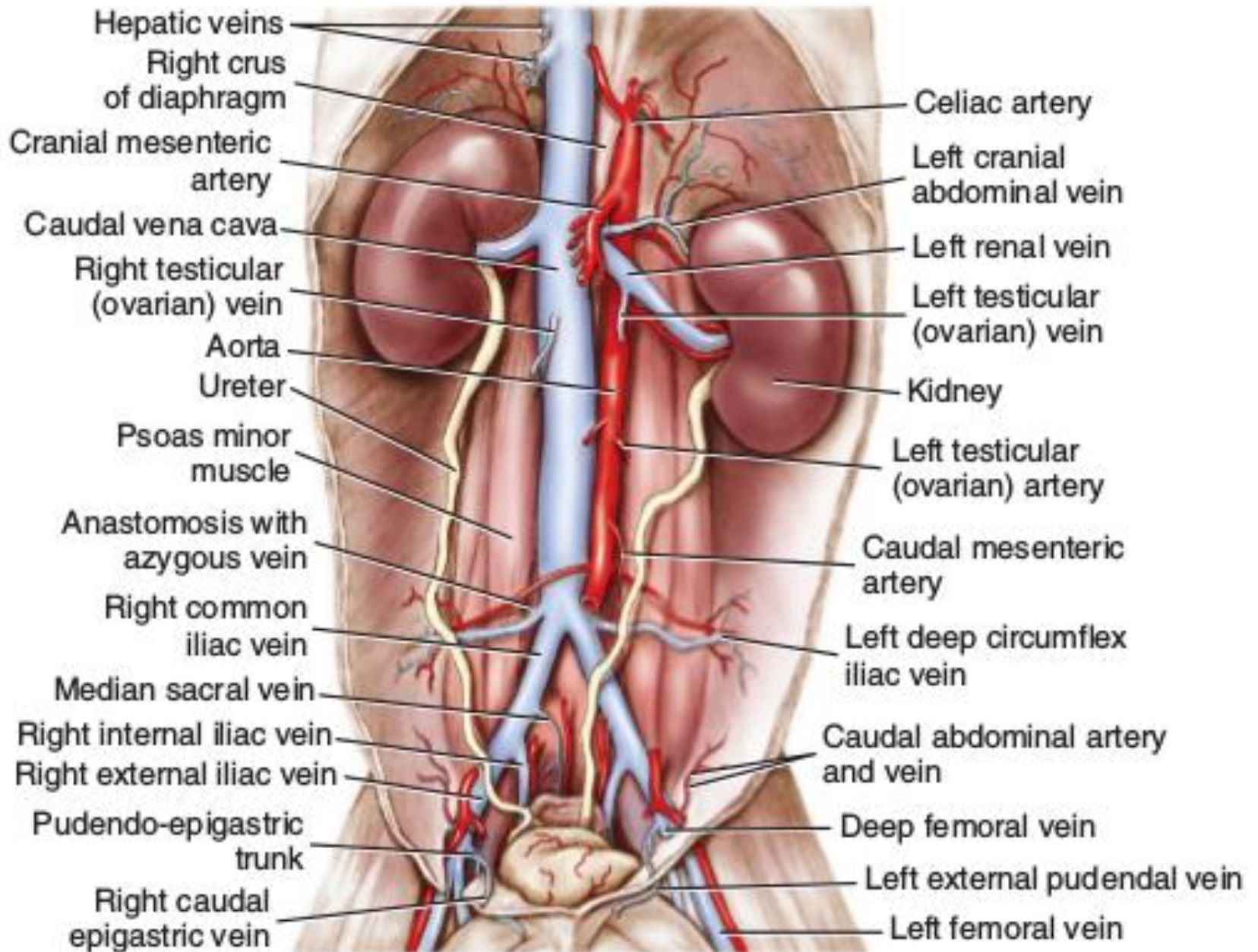
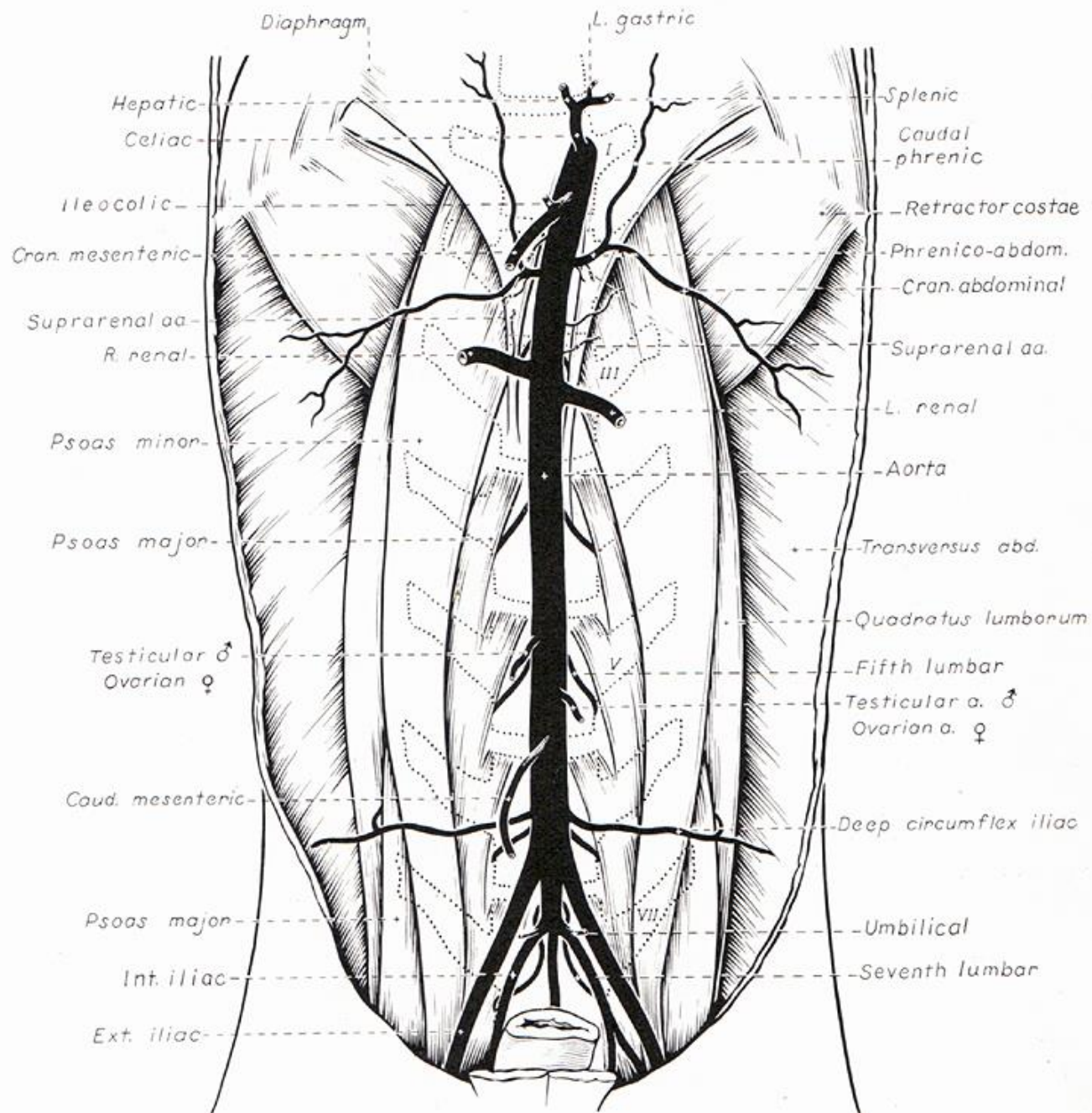


FIGURE 11-14 Branches of the common carotid artery, lateral aspect.







Ramos da aorta abdominal

Aorta abdominal

Tronco comum

A. frênica caudal

A. abdominal cranial

Aa. lombares

A. celíaca

A. hepática

Ramos hepáticos

A. cística

A. gástrica direita

A. gastroduodenal

A. gastroepiplóica (gastrointestinal) direita

A. pancreaticoduodenal cranial

A. gástrica esquerda

Ramos esofágicos

A. esplênica (lienal)

Aa. gástricas curtas

Ramos pancreáticos

A. gastroepiplóica (gastrointestinal) esquerda

A. mesentérica cranial

Tronco comum

A. cólica média

A. cólica direita

A. ileocólica

Ramo cólico

Ramo ileal mesentérico

A. cecal

Ramo ileal antimesentérico

A. pancreaticoduodenal caudal

Aa. jejunais

Aa. ileais

Aa. renais

Aa. testiculares e ováricas

A. mesentérica caudal

A. cólica esquerda

A. retal cranial

Aa. circumflexas profundas dos ilíacos

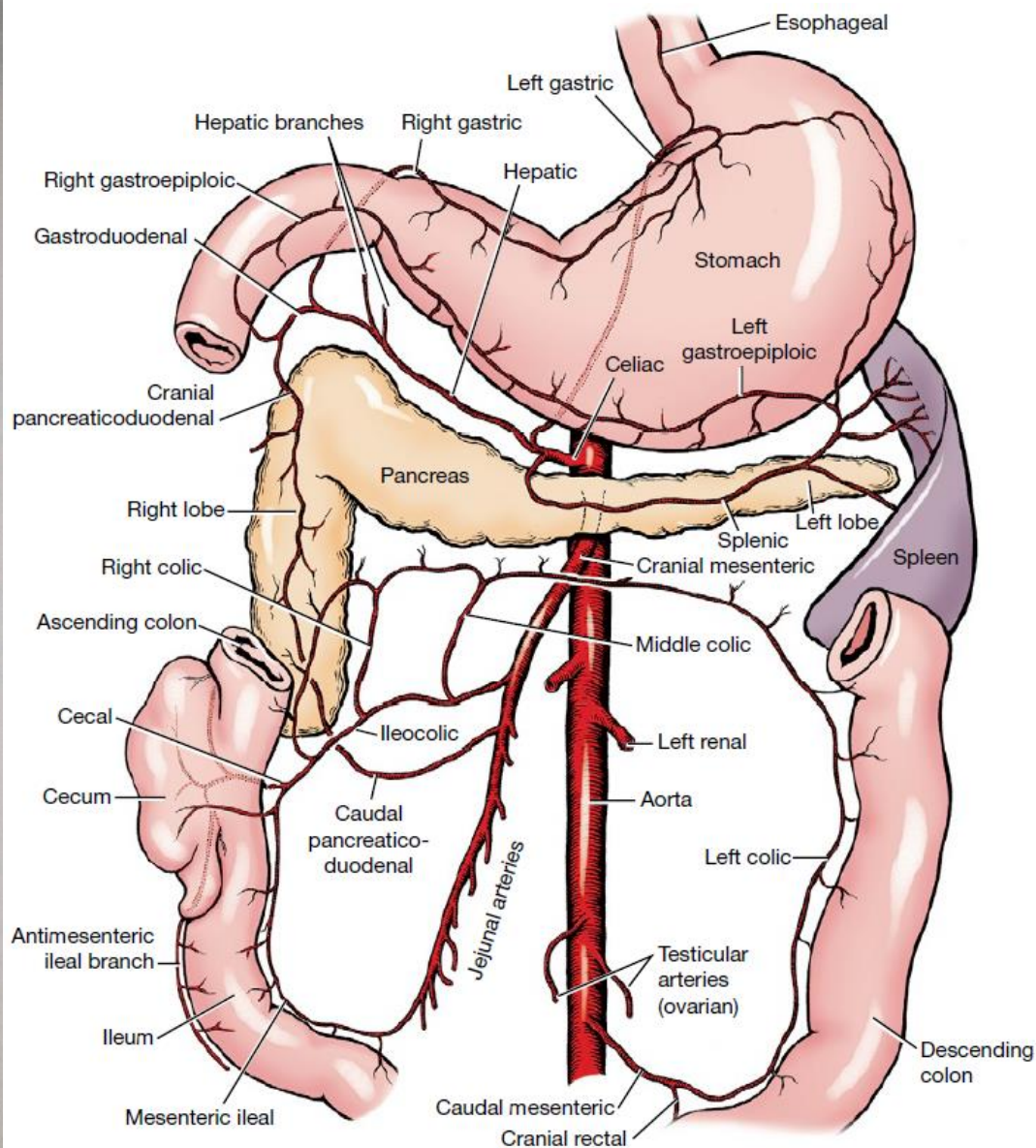


Fig. 4-29 Branches of celiac and cranial mesenteric arteries with principal anastomoses.

Ramos da aorta abdominal

Aorta abdominal

Tronco comum

A. frênica caudal

A. abdominal cranial

Aa. lombares

A. celíaca

A. hepática

Ramos hepáticos

A. cística

A. gástrica direita

A. gastroduodenal

A. gastroepiplóica (gastroomental) direita

A. pancreaticoduodenal cranial

A. gástrica esquerda

Ramos esofágicos

A. esplênica (lienal)

Aa. gástricas curtas

Ramos pancreáticos

A. gastroepiplóica (gastroomental) esquerda

A. mesentérica cranial

Tronco comum

A. cólica média

A. cólica direita

A. ileocólica

Ramo cólico

Ramo ileal mesentérico

A. cecal

Ramo ileal antimesentérico

A. pancreaticoduodenal caudal

Aa. jejunais

Aa. ileais

Aa. renais

Aa. testiculares e ováricas

A. mesentérica caudal

A. cólica esquerda

A. retal cranial

Aa. circumflexas profundas dos ilíacos

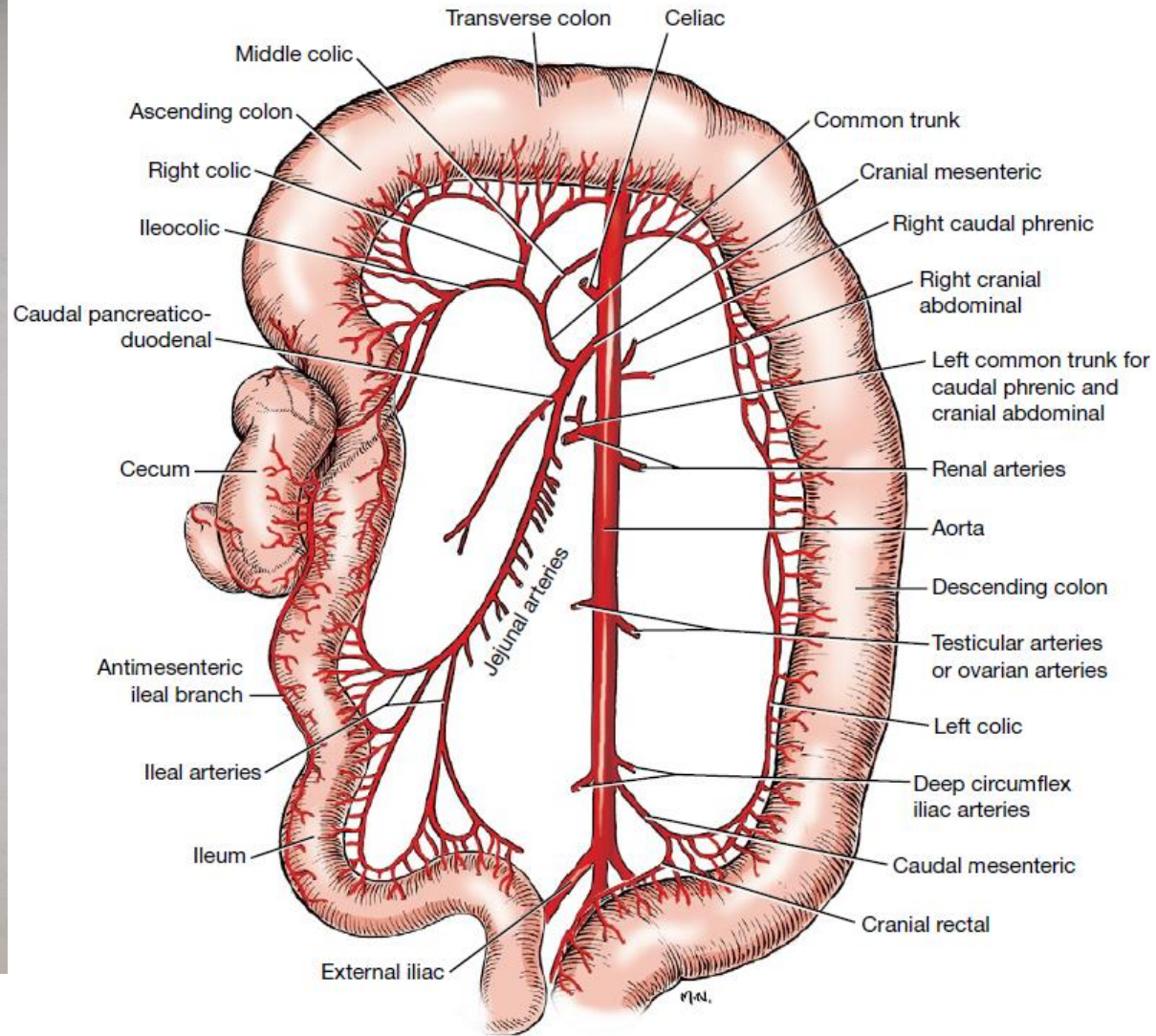


Fig. 4-31 Branches of cranial and caudal mesenteric arteries, ventral aspect.

